

THE VASCULAR FLORA OF ENCHANTED ROCK STATE NATURAL AREA, LLANO AND GILLESPIE COUNTIES, TEXAS, U.S.A.

Kimberly Norton Taylor and Robert J. O'Kennon

Botanical Research Institute of Texas
1700 University Dr.
Fort Worth, Texas 76107-3400, U.S.A.
ktaylor@brit.org, okennon@brit.org

ABSTRACT

A vascular plant survey of Enchanted Rock State Natural Area, Gillespie and Llano counties, Texas, was conducted from 1984 through 1994 and 2014 through 2015. The property sits near the southern border of the Llano Uplift, a primarily granite region. A total of 450 additional taxa were documented during the course of this study, bringing the total for the park to 948 taxa. Poaceae and Asteraceae were the most frequently encountered families with 137 and 113 total taxa, respectively. *Cyperus* (24 taxa), *Juncus* (17 taxa), *Euphorbia* (16 taxa), *Eleocharis* (13 taxa), and *Eragrostis* (13 taxa) were the most frequent genera. Twenty-eight taxa are considered rare at the state or global level, including 22 state-tracked taxa. Non-native taxa comprise 12.4% of the total flora with 118 taxa, 88 of which are new additions during the course of this study.

RESUMEN

Se llevó a cabo un estudio de las plantas vasculares en Enchanted Rock State Natural Area, y condados Gillespie y Llano, Texas, a partir de 1984 a 1994 y 2014 a 2015. La propiedad está localizada cerca de la frontera sur del Llano Uplift, una región principalmente granito. Fueron documentados un total de 450 taxones adicionales durante el transcurso de este estudio, llevando el total del parque a 948 taxones. Poaceae y Asteraceae fueron las familias más frecuentemente halladas, con 137 y 113 taxones, respectivamente. *Cyperus* (24 taxones), *Juncus* (17 taxones), *Euphorbia* (16 taxones), *Eleocharis* (13 taxones), and *Eragrostis* (13 taxones) fueron los géneros frecuentes. Veintiocho taxones se consideran raros al nivel estatal o global, incluyendo 22 taxones seguidos por el estado. Taxones que no son nativos componen el 12.4% de la flora total con 118 taxones, 88 por la cual son nuevas adiciones durante el curso de este estudio.

INTRODUCTION

The flora of the Llano Uplift in central Texas is quite diverse, with an abundance of rare and endemic elements. A handful of floristic studies on the Llano Uplift have been completed (Whitehouse 1931, 1933; Butterwick 1978; Walters & Wyatt 1982; Singhurst et al. 2007), which combined have increased our botanical knowledge of this unique region. Enchanted Rock State Natural Area (ERSNA), Llano and Gillespie counties, Texas, is one of only a few protected areas within the region. Whitehouse (1931, 1933) described the successional processes on the exposed granite at Enchanted Rock. This first look at the region documented 288 vascular plant taxa but was limited exclusively to the successional communities over rock, ignoring the surrounding vegetation. Butterwick (1978) followed, documenting 355 taxa from Enchanted Rock and its vicinity. She expanded her focus beyond the successional stages on the granite outcrops to include the Riparian Association along Sandy Creek, the Mesquite Grassland on the schist to the east of Sandy Creek, and the Oak Savanna on granitic gravel. This study, however, did not capture the full diversity of the site as it was conducted over a 12-day period at the end of July and the end of September, completely omitting the spring flora. The most recent published work on the flora of the Llano Uplift (Walters & Wyatt 1982) documented 383 taxa from several granite outcrops, including 201 taxa from Enchanted Rock. This study focused on the granite outcrops themselves and did not treat the surrounding vegetation.

Combined, these prior works (Whitehouse 1931, 1933; Butterwick 1978; Walters & Wyatt 1982) documented 476 taxa from ERSNA. While all of these studies contribute to the available knowledge about the plants of the region and provide a baseline on the flora and ecology of ERSNA, the flora of the site is undoubtedly much more diverse than they suggest. As a protected state natural area, ERSNA serves as a good example of the natural flora of the region, but no complete survey on the flora of the property has been completed since its of-

ficial opening as a state Natural Area over 30 years ago (1978). The purpose of this study is to update the complete vascular plant flora of Enchanted Rock State Natural Area in the Llano Uplift of central Texas.

Study Area

Enchanted Rock State Natural Area is a 1643-acre property owned by the state of Texas and managed for wild-life and tourism (Texas Parks and Wildlife: Enchanted Rock State Natural Area 2015). The land was purchased from private landowner Charles Moss by the Nature Conservancy of Texas in 1978 and was later sold to the state of Texas. The park opened as a state natural area in 1978. Prior to its acquisition by the Nature Conservancy, the property was held by several private landowners and used for cattle ranching and tourism.

Within the park boundary sits Enchanted Rock, a large granite dome for which the park is named (Fig. 1). Reaching a height of 137 m above the surrounding landscape (Whitehouse 1931) at an elevation of 553 m, this is the highest point on the property. Immediately to its southwest sits Little Rock, a smaller granitic dome reaching a height of 114 m (Whitehouse 1931). Three rugged granite hills sit to the east of Enchanted Rock: Turkey Peak, Freshman Mountain, and Buzzard's Roost. Sandy Creek runs the length of the park from the southwest to the northeast corners. Two small ponds occur within the property: Frog Pond to the south of Enchanted Rock and Moss Lake to its northwest. Hiking trails circle and traverse the property with campgrounds and picnic areas in the northwest, northeast, and southwest corners of the park.

ERSNA spans the border of southern Llano and northern Gillespie counties in the Llano Uplift of central Texas (Fig. 1). The climate of the region is humid sub-tropical (Peel et al. 2007) with an average of 31.2" precipitation per year. The highest monthly precipitation comes in May and June (3.71 and 3.32", respectively) with lows in January and February (1.84" each) (NOAA 2015). Average temperatures range from 8.7°C (47.7°F) in January to 29.4°C (84.9°F) in August with January lows averaging 0.1°C (32.2°F) and August highs averaging 37°C (98.6°F).

The Llano uplift, a primarily granite region, includes the majority of Llano and Mason counties, but extends into five additional bordering counties and covers approximately 5180 km² on the eastern margin of the Edwards Plateau (Walters & Wyatt 1982). The Precambrian granites, gneisses, and schists are surrounded by escarpments of Paleozoic and Mesozoic limestone and sandstone. The region was once covered by Cretaceous limestone and sandstone with the granite basement rock exposed due to erosion during the Miocene and Pliocene (Walters & Wyatt 1982). Therefore, the Llano Uplift is a "topographical basin consisting of exposed Precambrian metamorphic rocks and large massifs of Precambrian granite surrounded by a discontinuous rim of Cretaceous limestone" (Walters & Wyatt 1982).

Two geologic formations occur within the ERSNA boundary: Packsaddle schist to the southeast of Sandy Creek and Town Mountain granite to the northwest (Whitehouse 1931; Bureau of Economic Geology 1992). Vegetation on the Packsaddle schist forms a Mesquite Savanna with scattered *Prosopis glandulosa* shrubs and *Andropogon scoparius* (syn = *Schizachyrium scoparium* var. *scoparium*) as the climax grass dominant (Whitehouse 1931). The Texas Ecological Systems (TES) maps these regions as "Llano Uplift: Mesquite/Whitebrush Shrubland" with *P. glandulosa* listed as the dominant taxon (Fig. 1) (Ludeke et al. 2010).

Vegetation is markedly different on the Town Mountain granite, with several seral stages on the exposed granite, represented by the TES (Ludeke et al. 2010) "Llano Uplift: Grassland" community. Dominant vegetation includes *Schizachyrium scoparium*, *Bouteloua curtipendula*, *Bothriochloa laguroides* ssp. *torreyana*, *Bouteloua hirsuta*, and *Nassella leucotricha* (Ludeke et al. 2010). Scattered trees and shrubs may occur, including *Quercus fusiformis*, *Q. stellata*, *Diospyros texana*, and *Aloysia gratissima*. Whitehouse (1931, 1933) outlined the successional stages over granite for both the xerosere and the hydrosere, with crevice and gravel succession terminating in a *Q. marilandica*, *Q. fusiformis*, *Carya texana* forest and succession over the rock surface and in rock pools terminating in a *S. scoparium* grassland. These areas are now mapped by TES as the "Llano Uplift: Post Oak Woodland." "Native Invasive: Juniper Shrubland/Woodland" communities have invaded much of the slopes of the large granite hills with a dense thicket of *Juniperus ashei* (Ludeke et al. 2010).

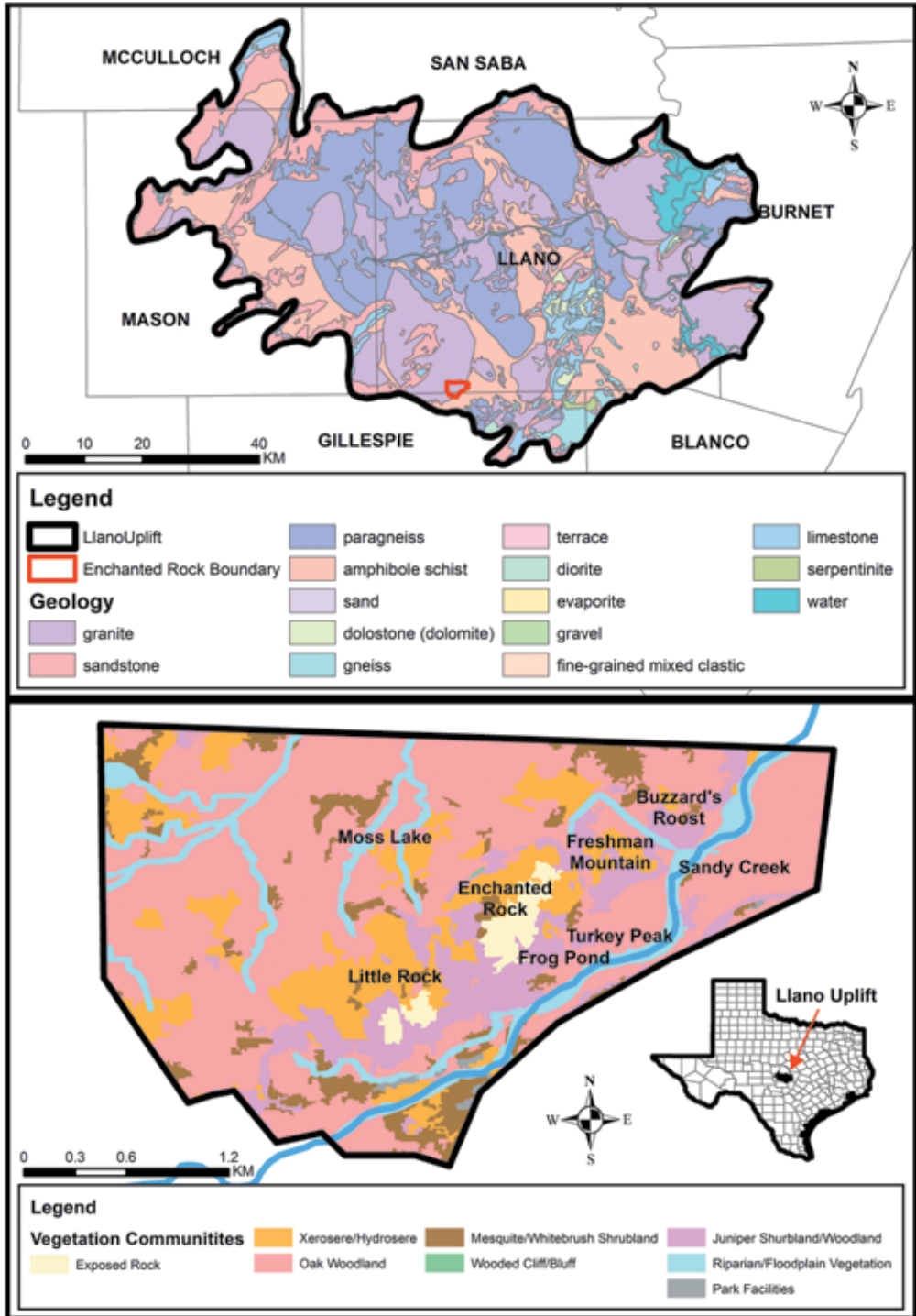


FIG. 1. Map of Llano Uplift (top) showing geologic make-up of the region; and vegetation communities at Enchanted Rock State Natural Area (bottom) (Ludeke et al. 2010).

METHODS

A complete checklist of vascular plant taxa found within the boundary of ERSNA was created based upon herbarium specimens collected by O'Kennon between 1984 and 1994 and by O'Kennon and Taylor in 2014 and 2015. All taxa documented by previous studies (Whitehouse 1931, 1933; Butterwick 1978; Walters & Wyatt 1982; Diggs & Lipscomb 2014) were included once identification was verified. Taxa noted in previous studies for which herbarium specimens could not be located are included but are indicated as such in Appendix 1. The following herbarium collections were searched for other specimens from the park: BRIT, SMU, TEX-LL, and VDB. A focused effort was made during the 2014 and 2015 growing seasons to survey the entire property and collect all remaining taxa encountered. The authors recollected any taxon that had not been collected since 1984. Collections are deposited in the Botanical Research Institute of Texas Herbarium (BRIT) with duplicates at the University of Texas Herbarium (TEX-LL). Systematics and nomenclature follow Biota of North America (Kartesz 2015; Diggs & Lipscomb 2014 for ferns). Taxon nativity, lifespan duration, flowering season, levels of endemism, and biogeographic affinity were determined using Kartesz (2015). State (S-rank) and Global (G/T-rank) status ranks were determined using NatureServe (2014).

Geographic affinity was determined for all native taxa by examining range maps (Kartesz 2015) of all taxa and determining the direction of the range center in relation to the study area, i.e., east or west of the Llano Uplift of Texas. Since the range maps only display presence-absence from within the United States and taxon ranges into Mexico could not be visualized, north and south tendencies were not determined. Taxa given a designation of "east" are those whose native distributions are primarily to the east of the Llano Uplift, with the Llano uplift occurring in the western-most quarter of the range. Conversely, taxa given a designation of "west" are those whose native distributions are primarily to the west of the Llano Uplift, with the Llano uplift occurring in the eastern-most quarter of the range. All other native taxa were given a designation of "intrinsic," indicating the Llano Uplift is in the center half of their distribution (not in the eastern- or western-most quarters). A designation of "disjunct" was given if a taxon's occurrence in the eastern-most or western-most quarter of the range was the only occurrence within that quarter and there existed a considerable gap between the primary distribution and the Llano Uplift.

RESULTS

A total of 948 species and infraspecific taxa, representing 122 families and 454 genera were documented from Enchanted Rock State Natural Area (Appendix 1). A total of 450 taxa were documented for the first time during the course of this study, representing 47.5% of the total flora. This adds to the 498 taxa documented from previous studies (Whitehouse 1931, 1933; Butterwick 1978; Walters & Wyatt 1982) and collections made by other collectors at ERSNA. The total flora was distributed among 34 pteridophytes, one gymnosperm, and 913 angiosperms. Angiosperms were represented by 258 monocots and 655 dicots. Poaceae and Asteraceae were the largest families with 137 and 113 taxa respectively, followed by Cyperaceae (68), Fabaceae (61), and Euphorbiaceae (35). The largest genera were *Cyperus* with 24 taxa and *Juncus* with 17 taxa, followed by *Euphorbia* (16), *Eragrostis* (13), *Eleocharis* (13), and *Oenothera* (10). New additions to the ERSNA flora include 20 additional families and 138 additional genera.

Twenty-eight taxa documented from ERSNA are considered rare at the state or global level (Table 1). This includes all taxa with a global rank of G1/T1 through G3/T3 and all taxa tracked at the state level with an S rank of S1 through S3. Significant additions during the current study include nine state-tracked taxa. Of the 28 rare taxa, 19 are endemic to Texas, two are endemic to Texas within the conterminous United States, and eight are endemic or near-endemic to granite regions, including *Packeria texensis* (O'Kennon & Trock 2003). *Isoetes piedmontana* and *Cyperus granitophilus* are endemic to granite regions with their primary distribution in the Piedmont granite in the southeastern United States. *Cyperus granitophilus* was located at the site for the first time in 2014 and is the first documented occurrence in the state of Texas (O'Kennon & Taylor 2015), though evaluation of earlier misidentified specimens of the closely related *C. squarrosus* indicate it has been at ERSNA for some time.

TABLE 1. Rare taxa documented from Enchanted Rock State Natural Area, including all taxa with a global rank of G1/T1 through G3/G3 and all taxa tracked at the state level with an S rank of S1 through S3. Global (G/T) and state (S) rarity ranks, habitat, endemism, and dates first and last observed within the park are indicated.

Taxon	Global Rank	State Rank	Habitat	Granite Endemic	Texas Endemic	Endemic to TX in US	First Reported	Last Observed
<i>Clematis texensis</i>	G3	S3	Post Oak Woodland	-	Y	-	1976	1976
<i>Cuscuta indecora</i> var. <i>indecora</i>	T3	-	Xerosere	-	-	-	1933	1978
<i>Blechnum appendiculatum</i>	G5	S1	Xerosere	-	-	-	1975	1978
<i>Styrax platanifolius</i> ssp. <i>platanifolius</i>	T3	S3	Xerosere	-	Y	-	1931	1982
<i>Aesculus pavia</i> var. <i>flavescens</i>	T3	-	Post Oak Woodland	-	Y	-	1982	1982
<i>Prunus texana</i>	G3	S3	Xerosere	-	Y	-	1978	1984
<i>Isoetes piedmontana</i>	G4	S1	Hydrosere	Y	-	-	1990	1990
<i>Penstemon guadalupensis</i>	G3	S3	Xerosere	-	Y	-	1931	1991
<i>Castilleja purpurea</i> var. <i>lindheimeri</i>	T3	S3	Xerosere	-	Y	-	1991	1991
<i>Valerianella stenocarpa</i>	G3	-	Post Oak Woodland	-	Y	-	1991	1991
<i>Matelea edwardsensis</i>	G3	S3	Post Oak Woodland	-	Y	-	1992	1992
<i>Prunus minutiflora</i>	G3	S3	Mesquite Savanna	-	Y	-	1992	1992
<i>Brazoria enquistii</i>	G2	S2	Riparian	Y	Y	-	1994	1994
<i>Valerianella texana</i>	G2	S2	Xerosere	Y	Y	-	1992	1998
<i>Eriocaulon koernickianum</i>	G2	S1	Hydrosere	-	-	-	1993	1999
<i>Cuscuta exaltata</i>	G3	S3	Post Oak Woodland	-	-	-	1929	2015
<i>Cyperus granitophilus</i>	G3	-	Hydrosere	Y	-	-	1930	2015
<i>Isoetes lithophila</i>	G2	S2	Hydrosere	Y	Y	-	1930	2015
<i>Packera texensis</i>	G2	S2	Post Oak Woodland	Y	Y	-	1931	2015
<i>Echinocereus coccineus</i> var. <i>paucispinus</i>	T3	S3	Xerosere	-	-	Y	1931	2015
<i>Campanula reverchonii</i>	G2	S2	Xerosere	Y	Y	-	1933	2015
<i>Juncus validus</i> var. <i>fasciatus</i>	T2	S4	Hydrosere	-	Y	-	1933	2015
<i>Ipomoea costellata</i> var. <i>edwardsensis</i>	T2	S2	Hydrosere	-	Y	-	1978	2015
<i>Eriogonum tenellum</i> var. <i>ramosissimum</i>	T3	S3	Xerosere	Y	Y	-	1978	2015
<i>Crataegus tracyi</i>	G3	S3	Post Oak Woodland	-	Y	-	1986	2015
<i>Paronychia setacea</i>	G3	S3	Xerosere	-	Y	-	1992	2015
<i>Hamatocactus bicolor</i>	G4	S3	Xerosere	-	-	Y	2015	2015
<i>Oenothera howardii</i>	G3	-	Post Oak Woodland	-	-	-	2015	2015

Included in the flora are 118 non-native taxa, representing 12.5% of the flora. Of these, 88 (74.6%) were new additions to the flora during the current study. Twenty-five of the 118 non-native taxa are listed as invasive in the state of Texas by the Invasive Plant Atlas of the United States (texasinvasives.org) (Table 2). One taxon, *Tamarix chinensis*, is also listed as invasive by the Texas Department of Agriculture.

Of the native flora, 477 taxa (50.3%) had intrinsic distributions with 38 endemic to Texas, 33 additional taxa endemic to Texas within the conterminous U.S., and nine endemic or near-endemic to granite outcrops. Twenty-one of the Texas endemics and 19 of the taxa with Texas as their only occurrence in the conterminous U.S. are new additions to the known flora. Extraneous or disjunct taxa accounted for 352 taxa (37.1%), with 114 (12.0%) extraneous to the west and 238 (25.1%) to the east. Sixteen western extraneous taxa were disjunct from the west, with fifteen of these having their nearest occurrence in the Trans Pecos region of west Texas;

TABLE 2. Non-native taxa documented from Enchanted Rock State Natural Area listed as invasive in the state of Texas by the Invasive Plant Atlas of the United States (texasinvasives.org). Duration, flowering time, and date first observed within the park are noted.

Taxon	Duration	Flowering time	First Observed
<i>Medicago minima</i>	Annual	Spring/Summer/Fall	1931
<i>Bothriochloa ischaemum</i>	Perennial	Spring/Summer/Fall/Winter	1978
<i>Bromus arvensis</i>	Annual	Spring/Summer	1978
<i>Bromus catharticus</i>	Annual/Perennial	Spring/Summer/Fall/Winter	1978
<i>Cynodon dactylon</i>	Perennial	Spring/Summer/Fall	1978
<i>Marrubium vulgare</i>	Perennial	Spring/Summer/Fall/Winter	1978
<i>Mellilotus officinalis</i>	Annual/Biennial/Perennial	Spring/Summer/Fall	1978
<i>Paspalum urvillei</i>	Perennial	Spring/Summer/Fall	1978
<i>Torilis arvensis</i>	Annual	Spring/Summer	1978
<i>Tribulus terrestris</i>	Annual	Spring/Summer/Fall/Winter	1978
<i>Verbascum thapsus</i>	Biennial	Spring/Summer/Fall/Winter	1978
<i>Vitex agnus-castus</i> var. <i>agnus-castus</i>	Perennial	Spring/Summer/Fall	1978
<i>Cyperus rotundus</i>	Perennial	Spring/Summer/Fall/Winter	1989
<i>Linaria vulgaris</i>	Perennial	Spring/Summer/Fall/Winter	1990
* <i>Tamarix chinensis</i>	Perennial	Spring/Summer/Fall/Winter	1990
<i>Lolium perenne</i> ssp. <i>perenne</i>	Perennial	Spring/Summer/Fall	1991
<i>Stellaria media</i>	Annual/Perennial	Spring/Summer/Fall/Winter	1991
<i>Carduus tenuiflorus</i>	Annual	Spring/Summer	1992
<i>Carthamus lanatus</i>	Annual	Spring/Summer/Fall	1992
<i>Centaurea solstitialis</i>	Annual	Spring/Summer/Fall	1992
<i>Cyperus entrianus</i>	Perennial	Summer	1992
<i>Carduus nutans</i>	Biennial/Perennial	Spring/Summer/Fall	2014
<i>Centaurea melitensis</i>	Annual/Biennial	Spring/Summer/Fall	2014
<i>Paspalum dilatatum</i>	Perennial	Spring/Summer/Fall	2014
<i>Sorghum halepense</i>	Perennial	Spring/Summer/Fall/Winter	2014

*Indicates taxon listed as Invasive by the Texas Department of Agriculture.

and nine of the eastern extraneous taxa were disjunct with four of these having their primary distribution in the granite Piedmont region or other glade systems of the southeastern United States. The flora was comprised of 263 annual taxa (27.7%), 549 biennial or perennial taxa (57.9%), and 136 facultative perennials (14.3%).

DISCUSSION

ERSNA boasts a high level of diversity at 948 taxa. Wilson et al. (2012) note that the highest species richness at small scales occurs in managed, temperate-grasslands, such as those at ERSNA. This tendency for high diversity combined with the geographic position of the region near the margin of the Eastern Deciduous Forest and the Great Plains may explain this high level of diversity. Indeed, the high numbers of eastern and western extraneous taxa (37.1% of the flora) within the park suggest that the Llano Uplift sits at a geographic crossroads. The addition of two distinct geologic formations, distinct successional stages of vegetation, and seasonal moisture and temperature fluctuations combine to increase regional diversity.

Rare Species

Eighteen of the 28 rare taxa occur in the seral vegetation over granite, with 12 in the xerosere and six in the hydrosere. This includes all of the rare taxa endemic to granite with the exception of *Packera texensis* and *Brazoria enquistii*. Eight taxa occur in the Post Oak Woodland, one taxon in the Mesquite Savanna, and one in the Riparian corridor. While there are rare taxa distributed within all habitats throughout the park, the seral vegetation culminating in the Post Oak Woodland is most important for preserving rare taxa. Many of the rare taxa within these habitats are considered rare not because they have small populations, but because of their limited range due to strict habitat requirements (granite outcrops). Many rare seral taxa—including *Isoetes lithophila* and *C. granitophilus* from the hydrosere and *Eriogonum tenellum* var. *ramosissimum* in the xerosere—

have large populations within the park, and populations appear stable. Notable exceptions include *Eriocaulon koernickianum*, *Penstemon guadalupeensis*, *Isoetes piedmontana*, and *Blechnum appendiculatum* which were last observed from small, single populations in 1999, 1991, 1990, and 1978 respectively.

The authors were unable to relocate 15 of the 28 rare taxa during the 2014 to 2015 survey period, including six taxa which were previously documented from within the park and have not been seen since prior to 1985: *Clematis texensis* (last collected 1976), *Cuscuta indecora* var. *indecora* (1978), *Blechnum appendiculatum* (1978), *Aesculus pavia* var. *flavescens* (1982), *Styrax platanifolius* ssp. *platanifolius* (1982), and *Prunus texana* (1984). All of these taxa, with the exception of *Prunus texana* and *Blechnum appendiculatum*, are typically found on limestone substrates. The granite bedrock of most of the park is not the ideal habitat for these species, and it is not surprising that they were not found in the park. Their presence within the park is likely to be sporadic and limited. Though typically most common on limestone, Whitehouse (1931) notes *S. platanifolius* ssp. *platanifolius* as common in the Oak Savanna, which lies over granite substrate, suggesting the taxon is not restricted to limestone substrate. Butterwick (1978) notes introduction of goats to the property, which likely led to its extirpation from the park. Goats likely played a role in the extirpation of *Prunus texana* as well, a species typically found in sandy soils in oak woodlands (Rohrer 2014) and previously seen on the granite slopes of Enchanted Rock.

Invasive Species

The first record of one of the 25 invasive species within the park was *Medicago minima*, dating back to 1931 (Whitehouse 1931). Eleven additional invasive taxa were first documented at the park in 1976 (Butterwick 1978), and eight taxa were first documented by O’Kennon between 1989 and 1993. Four invasive taxa, *Carduus nutans*, *Centaurea melitensis*, *Paspalum dilatatum*, and *Sorghum halepense* were first documented at the park in the 2014 to 2015 period of the study, though they have likely been present for some time. It is unlikely that *S. halepense*, a widespread weed across much of the United States, was not present within the park until recently. The oldest record within the state is from 1914 (Vinall 7, TEX-LL) near the Texas-Oklahoma border, and the earliest collection from the Llano Uplift was from 1950 (Cory 58326, BRIT). It has likely been on the property for years and was overlooked by previous botanists. Likewise, it is not surprising that *C. nutans*, *C. melitensis*, and *P. dilatatum* are new additions to the park, as all are well-established in the region, with the oldest central Texas collections for these taxa in 1958 (Correll & Johnston 19554, TEX-LL), 1923 (McAllister 1903, TEX-LL), and 1946 (Barkley & Rowell 65, TEX-LL), respectively.

The non-native flora was comprised of substantially more annual taxa and fewer perennial taxa (47.5% annuals, 27.1% perennials), compared to the native flora (24.9% annuals, 60.5% perennials). Many of the non-native taxa occupy areas with high levels of disturbance, including campgrounds, trail edges, and riparian river scour zones. These high levels of disturbance allow for the invasion of weedy annual taxa, explaining their relative abundance compared to native annual taxa. It is the perennial taxa, however, that pose the greatest threat to the native plant communities. Taxa such as *Bothriochloa ischaemum* and *Cynodon dactylon* have begun to invade grassland vegetation, displacing the native perennial grasses. *Tamarix chinensis*, a highly invasive woody shrub, has become established within waterways, though it has not yet reached large numbers. Its continued existence within the property poses a serious threat to the structure and functionality of Sandy Creek.

Conservation Implications

Several factors threaten the native vegetation of the Llano Uplift region. A handful of non-native taxa have likely been directly introduced by human visitors to the park. A single tree of *Prunus persica* (peach) grows out of a ravine on the north side of Enchanted Rock, a position where a discarded peach pit likely came to rest. A single small plant of *Phoenix dactylifera* (date palm) can be found growing in a vernal pool on the top of Enchanted Rock, also likely the result of a discarded snack. While these introductions pose little threat, the abundance of human visitors to the park likely is the greatest threat to its vegetation. Human traffic, particularly off-trail within sensitive communities, introduces disturbance and allows for the establishment of non-

native taxa. The rotating of trails to allow for highly impacted areas to recover appears to be successfully combating much of this, but the extreme popularity of the park will continue to pose a great threat.

In addition, the region has long been prized for its mineable minerals, and the granite bedrock of the Llano Uplift is regularly quarried. Bear Mountain, a granite mountain approximately 12 mi S of Enchanted Rock is an active quarry. A quarry also exists on the northern border of ERSNA, with granite rubble from the quarry only feet from the park boundary. The impacts of quarrying will be most directly felt by the seral vegetation, which houses many of the rare and endemic species within the region. Changing topography could alter hydrology which could threaten rare taxa in the hydrosere. High levels of disturbance at the quarries also allows for the introduction and establishment of non-native taxa.

Most of the Llano Uplift is held by private landowners, with a large portion used as pasture land for domestic livestock, including cattle, sheep, goats, and exotic herbivores. The combined effects of overgrazing by domestic livestock and overpopulation of both native and exotic herbivores threaten the vegetation of the region. The presence of goats at ERSNA in the 1980s likely contributed to the extirpation of *Prunus texana* and *Styrax platanifolius* ssp. *platanifolius* from the park.

Fire suppression over the last 150-plus years has also changed the vegetation, as much of the Mesquite Savanna and Post Oak Woodland habitats have become overgrown with native shrubs. *Prosopis glandulosa*, *Aloysia gratissima*, and *Opuntia* spp. form dense thickets in the once-Mesquite Savanna, with grassland vegetation limited to very small openings, roadsides, and rock outcrops. Much of the understory of the Post Oak Woodland and the perennial grassland stages of the seral vegetation are overgrown with *Diospyros texana*, *Aloysia gratissima*, and *Juniperus ashei*, potentially crowding out the herbaceous understory.

The threats previously discussed can be combatted with appropriate land management practices, including the use of prescribed fire. Vegetation shifts due to the potential for a changing climate, however, may prove more difficult to manage. The projected change in climate at ERSNA by the end of the 21st century (2081 to 2100) for the Ensemble Average Model for SRES emission scenarios B1, A1B, and A2 will be warmer and drier, with an average decrease in annual precipitation by 1.85 to 8.7% and an increase in average temperatures by 2.5°C (4.5°F) to 4.2°C (7.6°F) (Girvetz et al. 2009). The most significant decrease in precipitation is projected for spring months with a decrease of between 3.3 and 14.0%, when current precipitation levels are at their highest. An overall warmer and drier climate, particularly with a decrease in spring precipitation, would result in a decrease in moisture within the hydrosere, including vernal pools and seeps. These wet areas house several of the rare and endemic taxa at the park. This decrease could severely threaten their existence within these habitats. Taxa such as *Isoetes lithophila*, *I. piedmontana*, *Eriocaulon koernickianum*, and *Cyperus granitophilus* rely on the seasonal precipitation that fills the vernal pools and seeps. A decrease or delay in precipitation coupled with increasing temperatures may result in complete drying of the pools and seepage areas. Twenty-three of the 28 rare taxa, including *Castilleja purpurea* var. *lindheimeri*, *Valerianella stenocarpa*, *V. texana*, *Penstemon guadalupensis*, and *Packeria texensis*, flower in the spring and rely on this seasonal precipitation. The 238 taxa at the westernmost extent of their range, one quarter of the total flora, may find the increasingly arid conditions too extreme. These taxa in particular are at the greatest risk for adverse effects due to a more arid climate. Alternatively, the 114 taxa (12.0% of the total flora) at the easternmost extent of their range will likely increase in abundance, and the proportion of western extraneous taxa will likely increase as additional taxa move east to more favorable conditions. An overall shift in the flora to more xeric-adapted taxa is expected. This shift could result in the loss of several species endemic to the Llano Uplift. While the specifics of different climate models vary, the potential for an overall warmer and drier climate poses a real threat to the vegetation of the region, and it should not be ignored.

Future Work

This study documents the baseline flora of vascular plant taxa with available voucher specimens from ERSNA. It is by no means an exhaustive list, and there are as many as 150 additional taxa that have been noted as probable at the park for which voucher specimens are not available. Many of these taxa are transient annuals which sporadically appear and disappear in the constantly shifting sandy bottom of Sandy Creek. Other taxa are

rarely encountered and would be significant additions to the park, though their identities could not be verified without voucher specimens and they could not be relocated in the 2014 to 2015 sampling period. Additionally, this study only documents vascular plant taxa. Other significant groups, including lichens, bryophytes, and fungi, are in need of study. We encourage the continued documentation of all groups at the park so an analysis on the vegetation and floristic changes within ERSNA and the greater Llano Uplift region due to the threats outlined previously can be assessed.

APPENDIX 1. ANNOTATED CHECKLIST

Taxa are arranged alphabetically by family, genus, and species within the three major vascular plant groups (Ferns and Fern Allies, Gymnosperms, and Angiosperms). Nomenclature follows Kartesz (2015). Unless otherwise noted, primary collector is indicated by initials corresponding to the manuscript authors.

The following is a guide to the format and abbreviations associated with each taxon in the checklist:

Taxon Authority – COMMON NAME; Nativity; Lifespan duration; Flowering time; Geographic affinity; G/T-rank S-rank [studies when previously documented] (Collector collection number herbarium).

(#) indicates the taxon was documented by previous studies or observed by the authors but no specimens were found.

Symbols preceding taxon:

- ^ Taxon endemic to Texas
- ~ Taxon endemic to Texas within conterminous U.S.
- + Non-native Invasive (texasinvasives.org)

Flowering Time:

- Sp – Spring
- Su – Summer
- F – Fall
- W – Winter

Geographic Affinity:

- INT – Intrinsic
- EAST – Eastern Extraneous
- WEST – Western Extraneous
- D-EAST – Disjunct and Eastern Extraneous
- D-WEST – Disjunct and Western Extraneous

Studies with previous documentation:

- Wh 1933 – Whitehouse 1933 (288 taxa)
- Bw 1978 – Butterwick 1978 (355 taxa)
- WW 1982 – Walters & Wyatt 1982 (201 taxa)

FERNS AND FERN ALLIES

ASPLENIACEAE

Asplenium platyneuron (L.) B.S.P. – EBONY SPLEENWORT; Native; Perennial; Sp/Su/F/W; EAST; G5 (RJO 11397c BRIT).

BLECHNACEAE

Blechnum appendiculatum L. – PLATEAU HAMMOCK FERN; Native; Perennial; Sp/W; D-EAST; G5 S1 [Bw 1978] (*Blassingame* 4060 TEX).

EQUISETACEAE

Equisetum laevigatum A. Braun – SMOOTH SCOURING-RUSH; Native; Perennial; Sp/Su; INT; G5 (KNT 2687 BRIT).

ISOETACEAE

[^]*Isoetes lithophila* N.E. Pfeiffer – ROCK QUILLWORT; Native; Perennial; Sp/Su/F; INT; G2 S2 [Wh 1933, Bw 1978, WW 1982] (RJO 17778 BRIT).

Isoetes melanopoda Gay & Durieu ex Durieu – BLACKFOOT QUILLWORT; Native; Perennial; Sp/Su/F; EAST; G5 [Bw 1978, WW 1982] (RJO 27014a BRIT).

Isoetes piedmontana (N.E. Pfeiffer) C.F. Reed – PIEDMONT QUILLWORT; Native; Perennial; Sp/Su/F; D-EAST; G4 S1 (*Carr* 10569 TEX).

MARSILIACEAE

Marsilea vestita Hook. & Grev. – HAIRY WATERCLOVER; Native; Perennial; Sp/Su/F; INT; G5 (#).

Pilularia americana A. Braun – AMERICAN PILLWORT; Native; Perennial; Sp/Su/F; INT; G5 [Bw 1978, WW 1982] (RJO 25340 BRIT).

OPHIOGLOSSACEAE

Ophioglossum crotalophoroides Walt. – BULBOUS ADDERSTONGUE; Native; Perennial; Sp; EAST; G5 [WW 1982] (#).

Ophioglossum engelmannii Prantl – LIMESTONE ADDER’S TONGUE; Native; Perennial; Su/F/W; EAST; G5 (RJO 11507 BRIT).

POLYPODIACEAE

Pleopeltis polypodioides (L.) Andrews & Windham var. *michauxiana* (Weatherby) Andrews & Windham – GRAY POLYPODY; Native; Perennial; Su/F; EAST; T5 [WW 1982] (#).

PTERIDACEAE

Astrolepis integerrima (Hook.) Benham & Windham – INTERMEDIATE STARSCALE CLOAKFERN; Native; Perennial; Su/F; WEST; GU/GNR/TU/TNR (RJO 8121a BRIT).

Astrolepis sinuata (Lag. ex Sw.) Benham & Windham ssp. *sinuata* – STARSCALE CLOAKFERN; Native; Perennial; Sp/Su/F; WEST; T5 [Wh 1933, Bw 1978, WW 1982] (RJO 8402b BRIT).

Cheilanthes alabamensis (Buckl.) Kunze – ALABAMA LIPFERN; Native; Perennial; Sp/Su/F/W; INT; G4G5 [Bw 1978, WW 1982] (*Butterwick & Lamb* 2972 TEX).

Cheilanthes bonariensis (Willd.) Proctor – SLENDER LIPFERN; Native; Perennial; Su/F; D-WEST; G4 (RJO 9685e BRIT).

Cheilanthes eatonii Baker – EATON LIPFERN; Native; Perennial; Sp/Su/F; WEST; G5 [WW 1982] (#).

[~]*Cheilanthes kauffussii* Kunze – KAULFUSS LIPFERN; Native; Perennial; Su/F; D-WEST; G4 [Bw 1978, WW 1982] (KNT 2733 BRIT).

Cheilanthes lanosa (Michx.) D.C. Eat. – HAIRY LIPFERN; Native; Perennial; Sp/Su/F; D-EAST; G5 (KNT 2691 BRIT).

Cheilanthes lindheimeri Hook. – FAIRY SWORDS; Native; Perennial; Sp/Su/F; WEST; G4 [Wh 1933, Bw 1978, WW 1982] (KNT 2421 BRIT).

- Cheilanthes tomentosa* Link – WOOLLY LIPFERN; Native; Perennial; Sp/Su/F; INT; G5 [Wh 1933, Bw 1978, WW 1982] (KNT 2815 BRIT).
- Cheilanthes wootonii* Maxon – BEADED LIP FERN; Native; Perennial; Su/F; D-WEST; G5 (Taylor & Taylor 13183(B) BRIT).
- Notholaena copelandii* C.C. Hall – COPELAND CLOAKFERN; Native; Perennial; Su/F; WEST; G4 (RJO 10457 BRIT).
- Notholaena standleyi* Maxon – STAR CLOAKFERN; Native; Perennial; Sp/Su/F; WEST; G4 (RJO 10643 BRIT).
- Pellaea atropurpurea* (L.) Link – PURPLE CLIFFBRAKE; Native; Perennial; Sp/Su/F; INT; G5 (RJO 9081e BRIT).
- Pellaea ovata* (Desv.) Weatherby – OVATE CLIFFBRAKE; Native; Perennial; Sp/Su/F; INT; G4 [Wh 1933, Bw 1978, WW 1982] (KNT 2464 BRIT).
- Pellaea wrightiana* Hook. – WRIGHT CLIFFBRAKE; Native; Perennial; Sp/Su/F; INT; G5 [Wh 1933, Bw 1978, WW 1982] (KNT 2734 BRIT).

SALVINIACEAE

- Azolla microphylla* Kaulfuss – MOSQUITO FERN; Native; Annual/Perennial; Su/F; INT; G5 (Carr & Tracy 17369 TEX).

SELAGINELLACEAE

- Selaginella apoda* (L.) Spring – BASKET SELAGINELLA; Native; Perennial; Sp/Su/F/W; EAST; G5 (KNT 2780 BRIT).

GYMNOSPERMS

CUPRESSACEAE

- Juniperus ashei* Buchh. – ASHE JUNIPER; Native; Perennial; W; INT; G5 [Bw 1978] (KNT 2756 BRIT).

ANGIOSPERMS – MONOCOTS

AGAVACEAE

- Yucca constricta* Buckl. – CONSTRICTED YUCCA; Native; Perennial; Sp/W; INT; G5 (KNT 2795 BRIT).
- Yucca elata* (Engelm.) Engelm. – SOAPTREE YUCCA; Native; Perennial; Sp/Su; D-WEST; G5 [WW 1982] (KNT 2795 BRIT).
- Yucca rupicola* Scheele – TWISTLEAF YUCCA; Native; Perennial; Sp; INT; G5 [WW 1982] (#).

ALISMATACEAE

- Sagittaria papillosa* Buch. – NIPPLEBRACT ARROWHEAD; Native; Perennial; Sp/Su/F/W; EAST; G5 [Wh 1933] (Tharp & Whitehouse s.n.[00311820] TEX).

ALLIACEAE

- Allium canadense* L. var. *canadense* – WILD ONION; Native; Perennial; Sp; EAST; T5 (KNT 2417 BRIT).
- Allium canadense* L. var. *fraseri* Ownbey – FRASER ONION; Native; Perennial; Sp; INT; T4 [WW 1982] (KNT 2376 BRIT).
- Allium drummondii* Regel – DRUMMOND ONION; Native; Perennial; Sp/Su/W; INT; G5 [WW 1982] (Tharp s.n.[00318775] TEX).
- Nothoscordum bivalve* (L.) Britt. – CROWPOISON; Native; Perennial; Sp/Su/F/W; INT; G4 [Wh 1933, Bw 1978, WW 1982] (KNT 2867 BRIT).

AMARYLLIDACEAE

- Cooperia chlorosolen* Herbert – DRUMMOND RAINLILY; Native; Perennial; Sp/Su/F; INT; G5 [Wh 1933, Bw 1978, WW 1982] (KNT 2397 BRIT).
- Cooperia pedunculata* Herbert – PRAIRIE LILY; Native; Perennial; Sp/Su/W; INT; G4 [Bw 1978] (#).

ARACEAE

- Arisaema dracontium* (L.) Schott – DRAGONROOT; Native; Perennial; Sp/Su; EAST; G5 [Wh 1933, Bw 1978, WW 1982] (KNT 2789 BRIT).
- Spirodela polyrhiza* (L.) Schleid. – COMMON DUCKMEAT; Native; Perennial; Sp/Su/F/W; INT; G5 (RJO 10734c BRIT).

- Selaginella corallina* (Riddell) Wilbur & Whitson – RIDDELL SELAGINELLA; Native; Perennial; Sp/Su/F/W; EAST; G4 [Wh 1933, Bw 1978, WW 1982] (RJO 10802 BRIT).
- Selaginella peruviana* (Milde) Hieron. – PERU SELAGINELLA; Native; Perennial; Su/F; WEST; G5 [Bw 1978, WW 1982] (KNT 2820 BRIT).
- Selaginella wrightii* Hieron. – WRIGHT SELAGINELLA; Native; Perennial; Sp/W; WEST; G4 [Wh 1933, Bw 1978, WW 1982] (RJO s.n. BRIT).

THELYPTERIDACEAE

- Thelypteris kunthii* – SOUTHERN SHIELD FERN; Native; Perennial; Sp/Su/F; EAST; G5 [Bw 1978, WW 1982] (#).
- Thelypteris ovata* R. St. John var. *lindheimeri* (C. Christens.) A.R. Sm. – RIVER FERN; Native; Perennial; Sp/Su/F; INT; T4 [Bw 1978] (RJO 1065 BRIT).

WOODSIACEAE

- Woodsia obtusa* (Spreng.) Torr. ssp. *occidentalis* Windham – WESTERN WOODSIA; Native; Perennial; Su/F; EAST; T3 [Wh 1933, Bw 1978, WW 1982] (KNT 2445 BRIT).

ARECACEAE

- Phoenix dactylifera* – DATE PALM; Exotic; Perennial; Sp/Su; (KNT 2933 BRIT).

ASPARGACEAE

- Asparagus officinalis* L. – ASPARAGUS; Exotic; Perennial; Sp/Su/F; (RJO 11396x BRIT).

BROMELIACEAE

- Tillandsia recurvata* (L.) L. – BALLMOSS; Native; Perennial; Sp/Su/F/W; INT; G5 [Bw 1978, WW 1982] (KNT 1825 BRIT).

COMMELINACEAE

- Commelina erecta* L. – NARROWLEAF DAYFLOWER; Native; Perennial; Sp/Su/F; INT; G5 [Wh 1933, Bw 1978, WW 1982] (KNT 2474 BRIT).
- Tinantia anomala* (Torr.) C.B. Clarke – FALSE DAYFLOWER; Native; Annual; Sp/Su; INT; G5 [Wh 1933, Bw 1978, WW 1982] (Whitehouse s.n.[00325317] TEX).
- Tradescantia gigantea* Rose – GIANT SPIDERWORT; Native; Perennial; Sp/W; EAST; G4 [Wh 1933, Bw 1978, WW 1982] (KNT 2461 BRIT).
- Tradescantia humilis* Rose – TEXAS SPIDERWORT; Native; Perennial; Sp/W; EAST; G4 (RJO 7386e BRIT).
- Tradescantia occidentalis* (Britt.) Smyth – WESTERN SPIDERWORT; Native; Perennial; Sp/Su/F/W; INT; G5 [Wh 1933, Bw 1978, WW 1982] (RJO 7387e BRIT).
- Tradescantia wrightii* Rose & Bush – WRIGHT SPIDERWORT; Native; Perennial; Sp/Su; D-WEST; G4 (KNT 2439 BRIT).

CYPERACEAE

- Bulbostylis capillaris* (L.) Kunth ex C.B. Clarke ssp. *capillaris* – CAPILLARY HAIR-SEDGE; Native; Annual/Perennial; Sp/Su/F; INT; G5 [Bw 1978, WW 1982] (KNT 2741 BRIT).
- Bulbostylis ciliatifolia* (Elli.) Fern. var. *coarctata* (Elli.) Kral – CAPILLARY HAIR-SEDGE; Native; Annual/Perennial; Su/F; EAST; T4 (KNT 2866 BRIT).

- Bulbostylis juncooides* (Vahl) Kükenth. ex Herter – JUNCUS BULBOSTYLIS; Native; Perennial; Su; D-WEST; G5 [Wh 1933, WW 1982] (KNT 2741B BRIT).
- Carex cephalophora* Muhl. ex Willd. – WOODBANK SEDGE; Native; Perennial; Sp/Su; EAST; G5 (RJO 11714 BRIT).
- Carex crus-corvi* Shuttlw. ex Kunze – CROWFOOT SEDGE; Native; Perennial; Sp/Su; EAST; G5 (RJO 11724 BRIT).
- Carex emoryi* Dewey – EMORY SEDGE; Native; Perennial; Sp/Su; INT; G5 (RJO 7398a BRIT).
- Carex festucacea* Schkuhr ex Willd. – FESCUE SEDGE; Native; Perennial; Sp/Su; EAST; G5 (KNT 2449 BRIT).
- Carex leavenworthii* Dewey – LEAVENWORTH SEDGE; Native; Perennial; Sp/Su; EAST; G5 (KNT 2897 BRIT).
- Carex muelenbergii* Schkuhr ex Willd. var. *enervis* Boott – MÜHLENBERG SEDGE; Native; Perennial; Sp/Su; EAST; T5 [Wh 1933] (KNT 2418 BRIT).
- Carex perdentata* S.D. Jones – TOOTHBEAK SEDGE; Native; Perennial; Sp; INT; GU/GNR/TU/TNR (RJO 7401 BRIT).
- Carex planostachys* Kunze – CEDAR SEDGE; Native; Perennial; Sp/W; INT; G5 (KNT 2441 BRIT).
- Carex reniformis* (Bailey) Small – KIDNEY SEDGE; Native; Perennial; Sp/Su; EAST; G4 (RJO 11714 BRIT).
- Cyperus acuminatus* Torr. & Hook. ex Torr. – TAPERLEAF FLATSEDEGE; Native; Annual/Perennial; Sp/Su/F/W; INT; G5 [Wh 1933, Bw 1978, WW 1982] (RJO 8139 BRIT).
- Cyperus compressus* L. – POORLAND FLATSEDEGE; Native; Annual/Perennial; Su/F; EAST; G5 (RJO 8131 BRIT).
- Cyperus croceus* Vahl – BALDWIN FLATSEDEGE; Native; Perennial; Su/F; EAST; G5 [Bw 1978, WW 1982] (RJO 10912a BRIT).
- Cyperus difformis* L. – IRREGULAR FLATSEDEGE; Exotic; Annual; Su/F; (RJO 2165 BRIT).
- Cyperus echinatus* (L.) Wood – GLOBE FLATSEDEGE; Native; Perennial; Sp/Su/F; EAST; G5 (RJO 10731c BRIT).
- +*Cyperus enterianus* Boeckl. – WOODRUSH FLAT SEDGE; Exotic; Perennial; Su; (RJO 10952b BRIT).
- Cyperus erythrorhizos* Muhl. – REDROOT FLATSEDEGE; Native; Annual/Perennial; Su/F; INT; G5 (RJO 7406 BRIT).
- Cyperus esculentus* L. – YELLOW NUTSEDEGE; Native; Perennial; Sp/Su/F; INT; G5 (KNT 2846 BRIT).
- Cyperus flavescens* L. – YELLOW FLATSEDEGE; Native; Annual; Su/F/W; EAST; G5 (RJO 10706e BRIT).
- Cyperus granitophilus* McVaugh – GRANITE FLAT SEDGE; Native; Annual; Su/F; D-EAST; G3 [Wh 1933, Bw 1978] (KNT 2852 BRIT).
- Cyperus haspan* L. – SHEATHED FLATSEDEGE; Native; Perennial; Sp/Su/F; EAST; G5 (KNT 1835 BRIT).
- Cyperus lanceolatus* Poir. – LANCELEAF FLATSEDEGE; Exotic; Perennial; Su/F; (RJO 7970 BRIT).
- Cyperus lupulinus* (Spreng.) Marcks ssp. *lupulinus* – SLENDER FLATSEDEGE; Native; Perennial; Sp/Su/F; EAST; T5 (RJO 7403 BRIT).
- Cyperus odoratus* L. – FRAGRANT FLATSEDEGE; Native; Annual/Perennial; Sp/Su/F/W; INT; G5 (RJO 11719 BRIT).
- Cyperus pseudothyrsiflorus* (Kükenth.) R. Carter & S.D. Jones – FLAT SEDGE; Native; Perennial; Su/F; INT; G4 [Wh 1933, Bw 1978] (KNT 2651 BRIT).
- Cyperus pseudovegetus* Steud. – GREEN FLATSEDEGE; Native; Perennial; Sp/Su/F; EAST; G5 (RJO 2098 BRIT).
- Cyperus retroflexus* Buckl. – ONEFLOWER FLATSEDEGE; Native; Perennial; Sp/Su/F; INT; G5 [Wh 1933, Bw 1978] (RJO 9278 BRIT).
- Cyperus retrosus* Chapm. – RETROSE FLATSEDEGE; Native; Perennial; Sp/Su/F/W; EAST; G5 [Wh 1933] (KNT 2823 BRIT).
- **Cyperus rotundus* L. – NUTSEDEGE; Exotic; Perennial; Sp/Su/F/W; (RJO 6873 BRIT).
- Cyperus setigerus* Torr. & Hook. – BRISTLE FLATSEDEGE; Native; Perennial; Su/F; INT; G4 (KNT 2832 BRIT).
- Cyperus squarrosus* L. – BEARDED FLATSEDEGE; Native; Annual; Sp/Su/F/W; INT; G5 [Wh 1933, Bw 1978, WW 1982] (KNT 2776 BRIT).
- Cyperus strigosus* L. – FALSE NUTSEDEGE; Native; Perennial; Su/F; INT; G5 [Bw 1978] (KNT 2769B BRIT).
- Cyperus thyrsiflorus* Jungh. – SOUTHERN FLAT SEDGE; Native; Perennial; Su; EAST; G5 (KNT 2775 BRIT).
- Cyperus virens* Michx. – GREEN NUTSEDEGE; Native; Perennial; Sp/Su/F; EAST; G5 (KNT 2802 BRIT).
- Eleocharis atropurpurea* (Retz.) J. & K. Presl – PURPLE SPIKERUSH; Native; Annual; Sp/Su/F; INT; G4 (KNT 2750 BRIT).
- Eleocharis coloradoensis* (Britt.) Gilly – DWARF SPIKERUSH; Native; Annual/Perennial; Sp/Su/F; INT; G5 (RJO 10716 BRIT).
- Eleocharis engelmannii* Steud. – ENGELMANN SPIKERUSH; Native; Annual; Sp/Su/F; INT; G4 [Wh 1933] (RJO 10947a BRIT).
- Eleocharis geniculata* (L.) Roemer & J.A. Schultes – CANADA SPIKESEDEGE; Native; Annual; Sp/Su/F/W; INT; G5 [Bw 1978] (#).
- Eleocharis interstincta* (Vahl) Roemer & J.A. Schultes – KNOTTED SPIKERUSH; Native; Perennial; Sp/Su/F; EAST; G5 (RJO 10709 BRIT).
- ^*Eleocharis microformis* Buckl. – DWARF SPIKE-RUSH; Native; Annual; Su; INT; GU/GNR/TU/TNR (RJO 10171 BRIT).
- Eleocharis montevidensis* Kunth – SAND SPIKERUSH; Native; Perennial; Sp/Su; INT; G5 (KNT 2388A BRIT).
- Eleocharis obtusa* (Willd.) J.A. Schultes – BLUNT SPIKERUSH; Native; Annual/Perennial; Sp/Su/F; INT; G5 (RJO 10714 BRIT).
- Eleocharis palustris* (L.) Roemer & J.A. Schultes – LARGESPIKE SPIKERUSH; Native; Perennial; Sp/Su/F; INT; G5 (RJO 10715e BRIT).
- Eleocharis parvula* (Roemer & J.A. Schultes) Link ex Bluff, Nees & Schauer – DWARF SPIKERUSH; Native; Annual/Perennial; Sp/Su/F; INT; G5 (RJO 10916 BRIT).
- Eleocharis quadrangulata* (Michx.) Roemer & J.A. Schultes – SQUARESTEM SPIKERUSH; Native; Perennial; Su/F; EAST; G4 (RJO 10664p BRIT).
- Eleocharis tenuis* (Willd.) J.A. Schultes – SLENDER SPIKERUSH; Native; Perennial; Sp/Su/F; D-EAST; G5 (RJO s.n. BRIT).
- Eleocharis vivipara* Link – VIVIPAROUS SPIKERUSH; Native; Annual; Sp/Su/F; D-EAST; G5 (RJO s.n. BRIT).
- Fimbristylis annua* (All.) Roemer & J.A. Schultes – ANNUAL FIMBRY; Native; Annual; Su/F; EAST; G5 [Bw 1978, WW 1982] (RJO 8132 BRIT).
- Fimbristylis autumnalis* (L.) Roemer & J.A. Schultes – LATE SLENDER FIMBRY; Native; Annual; Sp/Su/F; EAST; G5 [Wh 1933, Bw 1978] (RJO 10734 BRIT).
- Fimbristylis dichotoma* (L.) Vahl – FORKED FIMBRY; Native; Annual/Perennial; Su/F; EAST; G5 (RJO 11703 BRIT).
- Fimbristylis puberula* (Michx.) Vahl var. *interior* (Britt.) Kral – INLAND FIMBRY; Native; Perennial; Sp/Su; INT; T5 (RJO 10703 BRIT).
- Fimbristylis puberula* (Michx.) Vahl var. *puberula* – HAIRY FIMBRY; Native; Perennial; Sp/Su; EAST; T5 [Bw 1978] (RJO 6874 BRIT).
- Fimbristylis vahlii* (Lam.) Link – VAHL FIMBRY; Native; Annual; Su/F; INT; G5 (RJO 8066 BRIT).
- Fuirena simplex* Vahl var. *aristulata* (Torr.) Kral – WESTERN UMBRELLAGRASS; Native; Perennial; Su/F; INT; T4 [Bw 1978] (KNT 1842 BRIT).
- Fuirena simplex* Vahl var. *simplex* – WESTERN UMBRELLAGRASS; Native; Perennial; Su/F; INT; GU/GNR/TU/TNR (RJO 11728 BRIT).
- Isolepis carinata* Hook. & Arn. ex Torr. – KEELED LATERAL-BULRUSH; Native; Annual; Sp/Su; EAST; G5 (RJO 11707b BRIT).
- Isolepis pseudosetacea* (Daveau) Gandog. – GULF COAST LATERAL-BULRUSH; Native; Annual; Sp; EAST; G4 (KNT 2822 BRIT).
- Kyllinga brevifolia* Rottb. – SHORTLEAF FLATSEDEGE; Native; Annual/Perennial; Sp/Su/F; EAST; G5 [Bw 1978] (RJO 8127 BRIT).
- Lipocarpha aristulata* (Coville) G. Tucker – AWNEED HEMICARPHA; Native; Annual; Su/F; WEST; G5 [Wh 1933] (KNT 2835 BRIT).
- Lipocarpha drummondii* (Nees) G. Tucker – DRUMMOND'S HALFCHAFF SEDGE; Native; Annual; Su/F; INT; G4 (RJO 11709 BRIT).

Rhynchospora caduca Ell. – ANGLESTEM BEAKRUSH; Native; Perennial; Sp/Su/F; EAST; G5 [Wh 1933] (*Tharp s.n.*[00308185] TEX).
Schoenoplectiella saximontana (Fern.) Lye – HALL BULRUSH; Native; Perennial; Sp/Su/F; WEST; G5 (KNT 1836 BRIT).
Schoenoplectiella x macgrathii Smith & P.M. McKenzie – MACGRATHS BULRUSH; Native; Perennial; Su/F; INT; GU/GNR/TU/TNR [Wh 1933] (KNT 1836 BRIT).
Schoenoplectus pungens (Vahl) Palla var. *longispicatus* (Britt.) S.G. Sm. – THREE-SQUARE BULRUSH; Native; Perennial; Sp/Su; WEST; T5 [Bw 1978] (KNT 1833 BRIT).
Scleria ciliata Michx. – FRINGED NUTRUSH; Native; Perennial; Sp/Su/F; EAST; G5 (KNT 3004 BRIT).
Scleria verticillata Muhl. ex Willd. – WHORLED NUTRUSH; Native; Annual; Su/F; EAST; G5 (KNT 1841 BRIT).

ERIOCAULACEAE

Eriocaulon koernickianum van Heurck & Muell.-Arg. – SMALLHEAD PIPEWORT; Native; Perennial; Sp; EAST; G2 S1 (RJO 11677 BRIT).

HYDROCHARITACEAE

Najas guadalupensis (Spreng.) Magnus ssp. *guadalupensis* – SOUTHERN NAIAD; Native; Annual; Sp/Su/F; INT; T5 (RJO 22634 BRIT).

IRIDACEAE

Sisyrinchium angustifolium P. Mill. – NARROWLEAF BLUE-EYED GRASS; Native; Perennial; Sp/Su; EAST; G5 (KNT 19259 BRIT).
Sisyrinchium bifforme Bickn. – DIMORPHUS BLUE-EYED GRASS; Native; Perennial; Sp/Su/F/W; INT; G4 [Bw 1978] (KNT 2377 BRIT).
Sisyrinchium chilense Hook. – SWORDLEAF BLUE-EYED GRASS; Native; Perennial; Sp; INT; G5 [Wh 1933, Bw 1978] (*Whitehouse s.n.*[00321981] TEX).
Sisyrinchium minus Engelm. & A. Gray – DWARF BLUE-EYED GRASS; Native; Annual; Sp/W; EAST; G5 [Wh 1933, WW 1982] (KNT 2491 BRIT).
Sisyrinchium pruinosum Bickn. – DOTTED BLUE-EYED GRASS; Native; Perennial; Sp; INT; GU/GNR/TU/TNR (KNT 2807 BRIT).
Sisyrinchium rosulatum Bickn. – ANNUAL BLUE-EYED GRASS; Native; Annual; Perennial; Sp/Su; EAST; G5 (KNT 2983 BRIT).

JUNCACEAE

Juncus acuminatus Michx. – KNOTLEAF RUSH; Native; Perennial; Sp/Su/F/W; INT; G5 (RJO 10736e BRIT).
Juncus brachycarpus Engelm. – WHITEROOT RUSH; Native; Perennial; Sp/Su/F; EAST; G4 (KNT 1843 BRIT).
Juncus bufonius L. – TOAD RUSH; Native; Annual; Sp/Su/F; INT; G5 (KNT 23888 BRIT).
Juncus capitatus Weigel – CAPPED RUSH; Exotic; Annual; Sp; (RJO 11396c BRIT).
Juncus dichotomus Ell. – FORKED RUSH; Native; Perennial; Sp/Su/F; EAST; G5 [Wh 1933] (KNT 2457 BRIT).
Juncus diffusissimus Buckl. – SLIMPOD RUSH; Native; Perennial; Sp/Su/F; EAST; G5 [Wh 1933, Bw 1978, WW 1982] (KNT 2415 BRIT).
Juncus dudleyi Wieg. – DUDLEY RUSH; Native; Perennial; Sp/Su/F; INT; G5 [Wh 1933] (*Whitehouse s.n.*[00291311] TEX).
Juncus effusus L. ssp. *solutus* (Fern. & Wieg.) Hämet-Ahti – COMMON RUSH; Native; Perennial; Sp/Su/F; EAST; T5 (RJO 11720e BRIT).
Juncus filipendulus Buckl. – RINGSPEED RUSH; Native; Perennial; Sp/Su; EAST; G5 (RJO 1063e BRIT).
Juncus interior Wieg. – INLAND RUSH; Native; Perennial; Sp/Su; INT; G4 [Wh 1933] (KNT 2375 BRIT).
Juncus marginatus Rostk. – GRASSLEAF RUSH; Native; Perennial; Sp/Su/F; EAST; G5 [Wh 1933, Bw 1978] (KNT 2765 BRIT).
Juncus nodatus Coville – JOINTED RUSH; Native; Perennial; Sp/Su; EAST; G5 (KNT 2454 BRIT).
Juncus scirpoides Lam. – NEEDLEPOD RUSH; Native; Perennial; Su/F; EAST; G5 (RJO 10810b BRIT).

Juncus tenuis Willd. – SLENDER RUSH; Native; Perennial; Sp/Su/F; INT; G5 (RJO 11397c BRIT).
Juncus texanus (Engelm.) Coville – TEXAS RUSH; Native; Perennial; Su; INT; G5 (KNT 1839 BRIT).
Juncus torreyi Coville – TORREY RUSH; Native; Perennial; Su/F; INT; G5 [Bw 1978] (KNT 2845 BRIT).
[^]*Juncus validus* Coville var. *fascinatus* M.C. Johnston – ROUNDHEAD RUSH; Native; Perennial; Su; INT; T2 S4 [Wh 1933, Bw 1978, WW 1982] (KNT 2749 BRIT).

ORCHIDACEAE

Spiranthes cernua (L.) L.C. Rich. – NODDING LADIES' TRESSES; Native; Perennial; Su/F; EAST; G5 [Wh 1933, Bw 1978, WW 1982] (KNT 2936 BRIT).

POACEAE

Aegilops cylindrica Host – JOINTED GOATGRASS; Exotic; Annual; Sp/Su; (RJO 11679b BRIT).
Agrostis eliottiana J.A. Schultes – ELLIOTT BENTGRASS; Native; Annual; Sp/Su/W; EAST; G5 [Wh 1933, Bw 1978, WW 1982] (KNT 3001 BRIT).
Agrostis hyemalis (Walt.) B.S.P. – WINTER BENTGRASS; Native; Perennial; Sp/Su/W; INT; G5 [Wh 1933, Bw 1978, WW 1982] (KNT 2455 BRIT).
Alopecurus carolinianus Walt. – CAROLINA FOXTAIL; Native; Annual; Sp/Su/W; INT; G5 [Wh 1933] (*Whitehouse s.n.*[00322059] TEX).
Andropogon glomeratus (Walt.) B.S.P. – BUSHY BLUESTEM; Native; Perennial; Sp/Su/F; INT; G5 [Bw 1978] (KNT 2924 BRIT).
Andropogon ternarius Michx. – SPLITBEARD BLUESTEM; Native; Perennial; Su/F; EAST; G5 (KNT 2408 BRIT).
Andropogon virginicus L. var. *virginicus* – BROOMSEGE BLUESTEM; Native; Perennial; F; EAST; T5 (KNT 3007 BRIT).
Aristida adscensionis L. – SIXWEEKS THREEAWN; Native; Annual; Sp/Su/F/W; WEST; G5 [Bw 1978] (*Butterwick & Smith* 3382 TEX).
Aristida longespica Poir. var. *geniculata* (Raf.) Fern. – KEARNEY THREEAWN; Native; Annual; Su/F; EAST; T5 [Wh 1933] (KNT 2887 BRIT).
Aristida oligantha Michx. – OLDFIELD THREEAWN; Native; Annual; Sp/Su/F; INT; G5 [Bw 1978] (KNT 2886 BRIT).
Aristida purpurascens Poir. – ARROWFEATHER THREEAWN; Native; Perennial; Su/F; EAST; G5 [Wh 1982] (RJO 9814c BRIT).
Aristida purpurea Nutt. var. *longiseta* (Steud.) Vasey – RED THREEAWN; Native; Perennial; Sp/Su/F/W; WEST; T5 [WW 1982] (RJO 11396p BRIT).
Aristida purpurea Nutt. var. *nealleyi* (Vasey) Allred – BLUE THREEAWN; Native; Perennial; Sp/Su/F/W; WEST; T4 [Bw 1978] (*Butterwick & Lamb* 3016 TEX).
Aristida purpurea Nutt. var. *purpurea* – PURPLE THREEAWN; Native; Perennial; Su/F; WEST; T5 [Wh 1933] (KNT 2774 BRIT).
Avena fatua L. – WILD OATS; Exotic; Annual; Sp/Su/F; (KNT 2426 BRIT).
Bothriochloa barbinodis (Lag.) Herter – CANE BLUESTEM; Native; Perennial; Sp/Su/F/W; WEST; G5 [Wh 1933] (*Tharp* 7699 TEX).
Bothriochloa hybrida (Gould) Gould – HYBRID BLUESTEM; Native; Perennial; Sp/Su/F; INT; G4 (KNT 2922 BRIT).
⁺*Bothriochloa ischaemum* (L.) Keng – KING RANCH BLUESTEM; Exotic; Perennial; Sp/Su/F/W; [Bw 1978] (KNT 2396 BRIT).
Bothriochloa laguroides (DC.) Herter ssp. *torreyana* (Steud.) Allred & Gould – SILVER BLUESTEM; Native; Perennial; Sp/Su/F/W; INT; G5 [Wh 1933, Bw 1978] (KNT 2744 BRIT).
Bouteloua aristoides (Kunth) Griseb. var. *aristoides* – NEEDLE GRAMA; Native; Annual; Sp/Su/F; WEST; G5 (KNT 2781 BRIT).
Bouteloua curtipendula (Michx.) Torr. var. *curtipendula* – SIDEOATS GRAMA; Native; Perennial; Sp/Su/F; INT; T5 [Wh 1933, Bw 1978, WW 1982] (KNT 2528 BRIT).
Bouteloua dactyloides (Nutt.) J.T. Columbus – BUFFALOGRASS; Native; Perennial; Sp/Su/F; INT; G4 [Bw 1978] (KNT 2928 TEX).

- Bouteloua gracilis* (Willd. ex Kunth) Lag. ex Griffiths – BLUE GRAMA; Native; Perennial; Sp/Su/F; WEST; G5 (KNT 2764 BRIT).
- Bouteloua hirsuta* Lag. ssp. *hirsuta* – HAIRY GRAMA; Native; Perennial; Sp/Su/F; INT; T5 [Bw 1978] (KNT 2451 BRIT).
- Bouteloua hirsuta* Lag. ssp. *pectinata* (Featherly) J. Wipff & S.D. Jones – TALL GRAMA; Native; Perennial; Sp/Su/F; INT; T5 (RJO 1097 BRIT).
- Bouteloua rigidiseta* (Steud.) A.S. Hitchc. – TEXAS GRAMA; Native; Perennial; Sp/Su/F; INT; G5 [Bw 1978] (KNT 2527 BRIT).
- Bouteloua trifida* Thurb. ex S. Wats. – RED GRAMA; Native; Perennial; Sp/Su/F/W; WEST; G4 (RJO 10985 BRIT).
- Briza minor* L. – LITTLE QUAKINGGRASS; Exotic; Annual; Sp/Su; (RJO 11698 BRIT).
- **Bromus arvensis* L. – JAPANESE BROME; Exotic; Annual; Sp/Su; [Bw 1978] (KNT 2387 BRIT).
- **Bromus catharticus* Vahl – RESCUEGRASS; Exotic; Annual/Perennial; Sp/Su/F/W; [Bw 1978] (KNT 2344 BRIT).
- Bromus lanceolatus* Roth – MEDITERRANEAN BROME; Exotic; Annual; Sp/Su/F; (KNT 2981 BRIT).
- Bromus pubescens* Spreng. – HAIRY BROME; Native; Perennial; Sp/Su; INT; G5 (RJO 10824e BRIT).
- Cenchrus incertus* M.A. Curtis – COMMON SANDBUR; Native; Annual/Perennial; Sp/Su/F/W; INT; GU/GNR/TU/TNR [Wh 1933, Bw 1978, WW 1982] (KNT 2518 BRIT).
- Chloris cucullata* Bisch. – HOODED WINDMILLGRASS; Native; Perennial; Sp/Su/F; INT; G5 [Wh 1933, Bw 1978] (KNT 2803 BRIT).
- Chloris gayana* Kunth – RHODESGRASS; Exotic; Perennial; Sp/Su/F; (RJO 10814 BRIT).
- Chloris verticillata* Nutt. – TUMBLE WINDMILLGRASS; Native; Perennial; Sp/Su/F; INT; G5 (RJO 10811 BRIT).
- Chloris virgata* Sw. – SHOWY CHLORIS; Exotic; Annual; Sp/Su/F/W; (RJO 10907 BRIT).
- Coelorachis cylindrica* (Michx.) Nash – CAROLINA JOINTTAIL; Native; Perennial; Sp/Su/F; EAST; G4 [Wh 1933, Bw 1978, WW 1982] (RJO 10682 BRIT).
- **Cynodon dactylon* (L.) Pers. – BERMUDAGRASS; Exotic; Perennial; Sp/Su/F; [Bw 1978] (KNT 2882 BRIT).
- Dactylis glomerata* L. – ORCHARDGRASS; Exotic; Perennial; Sp/Su/F; (RJO 11686a BRIT).
- Dactyloctenium aegyptium* (L.) Willd. – CROWFOOTGRASS; Exotic; Annual/Perennial; Sp/Su/F/W; (RJO 10812 BRIT).
- Dichanthelium acuminatum* (Sw.) Gould & C.A. Clark var. *acuminatum* – WOOLY ROSETTEGRASS; Native; Perennial; Sp/Su/F; INT; T5 [Wh 1933, Bw 1978, WW 1982] (KNT 2541 BRIT).
- Dichanthelium linearifolium* (Scribn. ex Nash) Gould – SLIMLEAF ROSETTEGRASS; Native; Perennial; Sp/Su/F; INT; G5 [Wh 1933] (Taylor & Taylor 13190 BRIT).
- Dichanthelium oligosanthes* (J.A. Schultes) Gould – SCRIBNER'S ROSETTEGRASS; Native; Perennial; Sp/Su/F; INT; G5 [Wh 1933, Bw 1978] (KNT 2766 BRIT).
- ~*Dichanthelium pedicellatum* (Vasey) Gould – CEDAR ROSETTEGRASS; Native; Perennial; Sp/Su/F; INT; G5 (RJO s.n. BRIT).
- Dichanthelium scabriusculum* (Eil.) Gould & C.A. Clark – WOOLLY ROSETTEGRASS; Native; Perennial; Sp/Su/F; EAST; G4 (KNT 3016 BRIT).
- Dichanthelium strigosum* (Muhl. ex Eil.) Freckmann – ROUGH-HAIR ROSETTEGRASS; Native; Perennial; Sp/Su/F; D-EAST; G5 (KNT 2419 BRIT).
- Digitaria californica* (Benth.) Henr. – ARIZONA COTTONTOP; Native; Annual/Perennial; Sp/Su/F/W; WEST; G5 [Wh 1933, Bw 1978, WW 1982] (RJO 9807b BRIT).
- Digitaria ciliaris* (Retz.) Koel. – SOUTHERN CRABGRASS; Exotic; Annual; Sp/Su/F/W; [Bw 1978, WW 1982] (KNT 2923 BRIT).
- Digitaria cognata* (J.A. Schultes) Pilger – FALL WITCHGRASS; Native; Perennial; Sp/Su/F; EAST; G5 [Wh 1933, Bw 1978, WW 1982] (Butterwick & Lamb 2908 TEX).
- Digitaria pubiflora* (Vasey) J. Wipff – HAIRYFLOWERED WITCHGRASS; Native; Perennial; Sp/Su/F; WEST; G5 (Tharp 47258 TEX).
- Diplachne fusca* (L.) Beauv. ex Roemer & J.A. Schultes ssp. *fascicularis* (Lam.) P.M. Peterson & N. Snow – BEARDED SPRANGLETOP; Native; Annual; Sp/Su/F/W; INT; GU/GNR/TU/TNR [Bw 1978] (Tharp 7141 TEX).
- Disakisperma dubium* (Kunth) P.M. Peterson & N. Snow – GREEN SPRANGLETOP; Native; Perennial; Sp/Su/F/W; INT; G4 [Bw 1978, WW 1982] (KNT 2913 BRIT).
- Echinochloa colona* (L.) Link – JUNGLERICE; Exotic; Annual; Sp/Su/F; [Bw 1978] (Carr & Kutac 7007 TEX).
- Echinochloa crus-gavonis* (Kunth) J.A. Schultes var. *macera* (Wieg.) Gould – GULF COCKSPUR GRASS; Native; Annual; Su; INT; GU/GNR/TU/TNR [WW 1982] (#).
- Eleusine indica* (L.) Gaertn. – GOOSEGRASS; Exotic; Annual; Su/F; (RJO 9669b BRIT).
- Eleusine tristachya* (Lam.) Lam. – THREE-SPIKE GOOSE GRASS; Exotic; Annual; Su/F; (RJO 11769f BRIT).
- Elymus canadensis* L. – CANADA WILD RYE; Native; Perennial; Sp/Su/F; INT; G5 [Wh 1933] (KNT 2427 BRIT).
- Elymus glabriflorus* (Vasey) Scribn. & Ball – SOUTHEASTERN WILD RYE; Native; Perennial; Sp/Su; EAST; GU/GNR/TU/TNR (RJO 11632 BRIT).
- Elymus interruptus* Buckl. – TEXAS WILD RYE; Native; Perennial; Sp/Su; INT; G5 (KNT 2705 BRIT).
- Elymus virginicus* L. var. *virginicus* – VIRGINIA WILD RYE; Native; Perennial; Sp/Su/F; INT; T5 [WW 1982] (#).
- Eragrostis barrelieri* Daveau – MEDITERRANEAN LOVEGRASS; Exotic; Annual; Sp/Su/F/W; (RJO 9686 BRIT).
- Eragrostis capillaris* (L.) Nees – LACE GRASS; Native; Annual; Su/F; EAST; G5 (RJO 8883 BRIT).
- Eragrostis cilianensis* (All.) Vign. ex Janchen – STINKGRASS; Exotic; Annual; Sp/Su/F; [Bw 1978, WW 1982] (RJO 7350 BRIT).
- Eragrostis curtipedicellata* Buckl. – GUMMY LOVEGRASS; Native; Perennial; Sp/Su/F; INT; G5 [Wh 1933, Bw 1978] (Butterwick & Lamb 2895 TEX).
- Eragrostis intermedia* A.S. Hitchc. – PLAINS LOVEGRASS; Native; Perennial; Sp/Su/F; INT; G5 [Wh 1933, Bw 1978, WW 1982] (KNT 2469 BRIT).
- Eragrostis lugens* Nees – MEDITERRANEAN MOURNING LOVEGRASS; Exotic; Perennial; Sp/Su/F; [Wh 1933, Bw 1978] (KNT 2857 BRIT).
- Eragrostis pectinacea* (Michx.) Nees ex Jedw. var. *miserrima* (Fourn.) J. Reeder – SPREADING LOVEGRASS; Native; Annual; Su/F; INT; T4 [Bw 1978] (RJO 11698 BRIT).
- Eragrostis pectinacea* (Michx.) Nees ex Jedw. var. *pectinacea* – SPREADING LOVEGRASS; Native; Annual; Sp/Su; INT; T5 [Wh 1933, Bw 1978] (KNT 2719 BRIT).
- Eragrostis pilosa* (L.) Beauv. var. *pilosa* – INDIAN LOVEGRASS; Native; Annual; Su/F; INT; T4 (KNT 2855 BRIT).
- Eragrostis secundiflora* J. Presl ssp. *oxylepis* (Torr.) S.D. Koch – RED LOVEGRASS; Native; Perennial; Sp/Su/F; INT; GU/GNR/TU/TNR [Bw 1978, WW 1982] (KNT 2522 BRIT).
- Eragrostis sessilispa* Buckl. – TUMBLE LOVEGRASS; Native; Perennial; Sp/Su/F; INT; G5 (RJO 11578 BRIT).
- Eragrostis superba* Peyr. – WILMAN LOVEGRASS; Exotic; Perennial; Su/F; (KNT 2722 BRIT).
- Eragrostis trichodes* (Nutt.) Wood – SAND LOVEGRASS; Native; Perennial; Su/F; INT; G5 (RJO 9811 BRIT).
- Erioneuron pilosum* (Buckl.) Nash – HAIRY TRIDENS; Native; Perennial; Sp/Su/F; WEST; G5 [Wh 1933, Bw 1978] (Butterwick & Lamb 2964 TEX).
- Heteropogon contortus* (L.) Beauv. ex Roemer & J.A. Schultes – TANGLEHEAD; Native; Perennial; Sp/Su/F/W; WEST; G5 [Bw 1978, WW 1982] (KNT 1845 BRIT).
- Hilaria belangeri* (Steud.) Nash var. *belangeri* – CURLYMESQUITE; Native; Perennial; Sp/Su/F/W; WEST; T5 [Bw 1978] (RJO 10986 BRIT).

- Hopia obtusa* (Kunth) F. Zuloaga & O. Morrone – VINE MESQUITE; Native; Perennial; Sp/Su/F; WEST; G5 (RJO 9672b BRIT).
- Hordeum jubatum* L. ssp. *jubatum* – FOXTAIL BARLEY; Native; Perennial; Sp/Su; INT; T5 (RJO 10502b BRIT).
- Hordeum murinum* L. ssp. *leporinum* (Link) Arcang. – HARE BARLEY; Exotic; Annual; Sp/Su; (KNT 2354 BRIT).
- Hordeum pusillum* Nutt. – LITTLE BARLEY; Native; Annual; Sp/Su/W; INT; G5 [Wh 1933, Bw 1978] (KNT 2369 BRIT).
- Leersia oryzoides* (L.) Sw. – RICE CUTGRASS; Native; Perennial; Sp/Su/F; INT; G5 [Bw 1978] (RJO 10667 BRIT).
- Limnodea arkansana* (Nutt.) L.H. Dewey – OZARKGRASS; Native; Annual; Sp/Su/W; INT; G4 [Wh 1933, Bw 1978] (KNT 2423 BRIT).
- **Lolium perenne* L. ssp. *perenne* – PERENNIAL RYEGRASS; Exotic; Perennial; Sp/Su/F; (KNT 2386 BRIT).
- Lolium temulentum* L. ssp. *temulentum* – DARNEL RYEGRASS; Exotic; Annual; Sp/Su/F; (KNT 2950 BRIT).
- Lycurus phleoides* Kunth – WOLF'S TAIL; Native; Perennial; Sp/Su/F; D-WEST; G5 (RJO 10709b BRIT).
- Melica nitens* (Scribn.) Nutt. ex Poir. – THREEFLOWER MELIC; Native; Perennial; Sp/Su; INT; G5 [Wh 1933, Bw 1978, WW 1982] (KNT 2785 BRIT).
- ~*Muhlenbergia lindheimeri* A.S. Hitchc. – LINDHEIMER MUHLY; Native; Perennial; F; INT; G4 [Bw 1978] (KNT 2690 BRIT).
- Muhlenbergia schreberi* J.F. Gmel. – NIMBLEWILL MUHLY; Native; Perennial; Sp/Su/F/W; EAST; G5 [Bw 1978] (*Butterwick & Lamb 3082 TEX*).
- Muhlenbergia tenuifolia* (Kunth) Trin. – MESA MUHLY SLIM-LEAF MUHLY; Native; Annual/Perennial; Su/F; D-WEST; G5 [Bw 1978, WW 1982] (*Butterwick & Lamb 3023 TEX*).
- Muhlenbergia utilis* (Torr.) A.S. Hitchc. – APAREJOGRASS WISPY; Native; Perennial; Sp/Su/F/W; WEST; G4 (RJO 11912 BRIT).
- Nassella leucotricha* (Trin. & Rupr.) Pohl – TEXAS WINTERGRASS; Native; Perennial; Sp; INT; G5 [Wh 1933, Bw 1978, WW 1982] (KNT 2353 BRIT).
- Oplismenus hirtellus* (L.) Beauv. ssp. *setarius* (Lam.) Mez ex Ekman – BASKETGRASS; Native; Perennial; Sp/Su/F/W; EAST; T5 (RJO 10913b BRIT).
- Panicum antidotale* Retz. – BLUE PANIC; Exotic; Perennial; Sp/Su/F; (KNT 2920 BRIT).
- Panicum capillare* L. – WITCHGRASS; Native; Annual; Sp/Su/F; INT; G5 (RJO 10651e BRIT).
- Panicum diffusum* Sw. – SPREADING PANIC; Native; Perennial; Sp/Su/F; INT; GU/GNR/TU/TNR [Bw 1978] (*Barkley 47285 BRIT*).
- Panicum hallii* Vasey var. *hallii* – HALL'S PANIC GRASS; Native; Perennial; Sp/Su/F; INT; T4 [Bw 1978] (KNT 2761 BRIT).
- Panicum virgatum* L. var. *virgatum* – SWITCHGRASS; Native; Perennial; Sp/Su/F; INT; T5 [Wh 1933, Bw 1978, WW 1982] (KNT 2463 BRIT).
- Paspalum botteri* (Fourn.) Chase – RUSTYSEED PASPALUM; Native; Perennial; Sp/Su/F; EAST; G5 (KNT 2797 BRIT).
- **Paspalum dilatatum* Poir. – DALLISSGRASS; Exotic; Perennial; Sp/Su/F; (KNT 2797 BRIT).
- Paspalum distichum* L. – KNOTGRASS; Native; Perennial; Sp/Su/F; INT; G5 (RJO 10956b BRIT).
- Paspalum floridanum* Michx. – FLORIDA PASPALUM; Native; Perennial; Sp/Su/F; EAST; G5 (RJO 10957b BRIT).
- Paspalum pubiflorum* Rupr. ex Fourn. – HAIRY-SEED CROWN GRASS; Native; Perennial; Sp/Su/F; INT; G5 [Bw 1978] (*Butterwick & Lamb 3331 TEX*).
- Paspalum setaceum* Michx. – FRINGELEAF PASPALUM; Native; Perennial; Sp/Su/F/W; INT; G5 [Wh 1933, Bw 1978] (KNT 2700 BRIT).
- **Paspalum urvillei* Steud. – VASEYGRASS; Exotic; Perennial; Sp/Su/F; [Bw 1978] (RJO 9670b BRIT).
- Phalaris caroliniana* Walt. – CAROLINA CANARYGRASS; Native; Annual; Sp/Su/W; INT; G5 [Wh 1933, Bw 1978] (KNT 2476 BRIT).
- Poa annua* L. – ANNUAL BLUEGRASS; Exotic; Annual; Sp/Su/F/W; GU/GNR/TU/TNR (#).
- Polypogon monspeliensis* (L.) Desf. – RABBITFOOT POLYPOGON; Exotic; Annual; Sp/Su/F/W; [Bw 1978] (KNT 2379 BRIT).
- Polypogon viridis* (Gouan) Breistr. – WATER BENTGRASS; Exotic; Perennial; Sp/Su/F; [Bw 1978] (RJO 11452 BRIT).
- Schedonardus paniculatus* (Nutt.) Trel. – TUMBLEGRASS; Native; Perennial; Sp/Su/F; INT; G5 (RJO 7382 BRIT).
- Schedonorus arundinaceus* (Schreb.) Dumort. – TALL FALSE RYE GRASS; Exotic; Perennial; Sp/Su/F/W; (RJO 11455 BRIT).
- Schizachyrium scoparium* (Michx.) Nash var. *scoparium* – LITTLE BLUESTEM; Native; Perennial; Su/F; INT; T5 [Wh 1933, Bw 1978, WW 1982] (KNT 2470 BRIT).
- Setaria leucopila* (Scribn. & Merr.) K. Schum. – PLAINS BRISTLEGRASS; Native; Perennial; Sp/Su/F; INT; G5 [Bw 1978] (*Butterwick & Lamb 2920 TEX*).
- Setaria macrostachya* Kunth – PLAINS BRISTLEGRASS; Native; Perennial; Su/F; WEST; G5 (KNT 2854 BRIT).
- Setaria parviflora* (Poir.) Kerguelen – KNOTROOT BRISTLEGRASS; Native; Perennial; Sp/Su/F/W; INT; G5 [Bw 1978] (KNT 2847 BRIT).
- Setaria pumila* (Poir.) Roemer & J.A. Schultes – YELLOW BRISTLEGRASS; Exotic; Annual; Su/F; (RJO 9810b BRIT).
- Setaria scheelei* (Steud.) A.S. Hitchc. – SOUTHWESTERN BRISTLEGRASS; Native; Perennial; Sp/Su/F; INT; GU/GNR/TU/TNR (KNT 2659 BRIT).
- ~*Setaria texana* W.H.P. Emery – TEXAS BRISTLEGRASS; Native; Perennial; Su/F; INT; G4 (KNT 2931 BRIT).
- Sorghastrum nutans* (L.) Nash – YELLOW INDIANGRASS; Native; Perennial; Su/F; INT; G5 [Bw 1978] (*Butterwick & Smith 3387 TEX*).
- Sorghum bicolor* (L.) Moench – MILO SORGHUM; Exotic; Annual; Su/F; (RJO 10662b BRIT).
- **Sorghum halepense* (L.) Pers. – JOHNSONGRASS; Exotic; Perennial; Sp/Su/F/W; (KNT 2697 BRIT).
- Sphenopholis obtusata* (Michx.) Scribn. – PRAIRIE WEDGESCALE; Native; Annual/Perennial; Sp/Su; INT; G5 [Wh 1933, Bw 1978] (KNT 2837 BRIT).
- Sporobolus clandestinus* (Biehler) A.S. Hitchc. – ROUGH DROPSEED; Native; Perennial; Su/F; EAST; G5 [WW 1982] (#).
- Sporobolus compositus* (Poir.) Merr. – TALL DROPSEED; Native; Perennial; Su/F; INT; G5 [Bw 1978] (KNT 2884 BRIT).
- Sporobolus cryptandrus* (Torr.) A. Gray – SAND DROPSEED; Native; Perennial; Sp/Su/F; INT; G5 [Bw 1978] (KNT 2654 BRIT).
- Sporobolus indicus* (L.) R. Br. – SMUTGRASS; Exotic; Annual/Perennial; Sp/Su/F/W; G5 (*Albers s.n. BRIT*).
- Steinchisma hians* (Eli.) Nash – GAPING PANICGRASS; Native; Perennial; Sp/Su/F; EAST; G5 [Wh 1933, Bw 1978] (KNT 2412 BRIT).
- Trachypogon spicatus* (L. f.) Kuntze – SPIKE CRINKLEAWN; Native; Perennial; Su/F; WEST; G5 [Bw 1978] (#).
- Tragus berteronianus* J.A. Schultes – SPIKE BURGRASS; Exotic; Annual; Su/F; [Wh 1933, Bw 1978] (RJO 9810a BRIT).
- Tridens albescens* (Vasey) Woot. & Standl. – WHITE TRIDENS; Native; Perennial; Sp/Su/F; INT; G4 [Bw 1978] (*Butterwick & Lamb 3383 TEX*).
- Tridens flavus* (L.) A.S. Hitchc. var. *flavus* – PURPLETOP; Native; Perennial; Su/F; EAST; T5 [Bw 1978] (KNT 2808 BRIT).
- Tridens strictus* (Nutt.) Nash – LONGSPIKE TRIDENS; Native; Perennial; Su/F; EAST; G5 [Bw 1978, WW 1982] (*Butterwick & Lamb 3383 TEX*).
- Tripogon spicatus* (Nees) Ekman – AMERICAN TRIPOGON; Native; Perennial; Sp/Su/F; INT; G4 [Wh 1933, Bw 1978, WW 1982] (RJO 7968 BRIT).
- Tripsacum dactyloides* (L.) L. – EASTERN GAMAGRASS; Native; Perennial; Sp/Su/F/W; INT; G5 (KNT 2359 BRIT).
- Urochloa ciliatissima* (Buckl.) R. Webster – FRINGED SIGNALGRASS; Native; Perennial; Sp/Su/F; INT; G5 [Bw 1978] (KNT 2674 BRIT).
- Urochloa fusca* (Sw.) B.F. Hansen & Wunderlin – BROWN-TOP LIVERSEED GRASS; Native; Annual/Perennial; Sp/Su/F; INT; G5 (RJO 11759e BRIT).

Vulpia octiflora (Walt.) Rydb. var. *octiflora* – COMMON SIXWEEKSGRASS; Native; Annual; Sp/Su; INT; G5 [Wh 1933, Bw 1978] (KNT 2394 BRIT).

PONTERIERACEAE

Heteranthera limosa (Sw.) Willd. – BLUE MUD PLANTAIN; Native; Annual; Sp/Su/F; INT; G5 [Bw 1978, WW 1982] (*Butterwick & Lamb* 3078 TEX).

POTAMOGETONACEAE

Potamogeton diversifolius Raf. – WATERTHREAD PONDWEED; Native; Perennial; Sp/Su/F; INT; G5 (RJO 11730e BRIT).

ANGIOSPERMS – DICOTS

ACANTHACEAE

Dicliptera brachiata (Pursh) Spreng. – FALSE MINT; Native; Annual/Perennial; Su/F; EAST; G5 (RJO 11733b BRIT).

Dyschoriste linearis (Torr. & A. Gray) Kuntze var. *linearis* – NARROWLEAF SNAKEHERB; Native; Perennial; Sp/Su; INT; G4 [Wh 1933] (RJO 10511e BRIT).

Justicia americana (L.) Vahl – AMERICAN WATER WILLOW; Native; Perennial; Sp/Su/F; EAST; G5 (RJO 7755 BRIT).

Justicia pilosella (Nees) Hilsenb. – HAIRY TUBETONGUE; Native; Perennial; Sp/Su/F/W; INT; G5 (RJO 7986 BRIT).

[^]*Ruellia drummondiana* (Nees) A. Gray – DRUMMOND RUELLIA; Native; Perennial; Sp/Su/F; INT; G4 (RJO 9671p BRIT).

Ruellia nudiflora (Engelm. & A. Gray) Urban var. *nudiflora* – VIOLET RUELLIA; Native; Perennial; Sp/Su/F/W; INT; GU/GNR/TU/TNR (RJO 10710 BRIT).

ADOXACEAE

Viburnum rufidulum Raf. – RUSTY BLACKHAW; Native; Perennial; Sp/Su/W; EAST; G5 [Wh 1933, Bw 1978, WW 1982] (KNT 2456 BRIT).

AMARANTHACEAE

Alternanthera caracasana Kunth – MAT CHAFF FLOWER; Native; Perennial; Sp/Su/F; INT; G5 (KNT 2346 BRIT).

Alternanthera pungens Kunth – KHAKIWEED; Native; Perennial; Sp/Su/F/W; EAST; GU/GNR/TU/TNR (KNT 2752 BRIT).

Amaranthus albus L. – TUMBLEWEED AMARANTH; Native; Annual; Sp/Su/F; INT; GU/GNR/TU/TNR [Wh 1933, Bw 1978] (*Whitehouse s.n.*[00398413] TEX).

Amaranthus blitoides S. Wats. – PROSTRATE AMARANTH; Native; Annual; Su/F; INT; GU/GNR/TU/TNR [WW 1982] (#).

Amaranthus palmeri S. Wats. – PALMER AMARANTH; Native; Annual; Su/F; INT; G5 [Wh 1933] (*Whitehouse s.n.*[00407885] TEX).

Amaranthus polygonoides L. – BERLANDIER AMARANTH; Native; Annual; Sp/Su; INT; G5 (RJO 10865 BRIT).

Chenopodium album L. – LAMBSQUARTERS; Native; Annual; Sp/Su/F; INT; G5 (RJO 8078 BRIT).

Chenopodium leptophyllum (Moq.) Nutt. ex S. Wats. – SLIMLEAF GOOSEFOOT; Native; Annual; Sp/Su/F; WEST; G5 (KNT 2942 BRIT).

Froelichia floridana (Nutt.) Moq. – FLORIDA SNAKECOTTON; Native; Annual; Sp/Su/F/W; INT; G5 (RJO 6915 BRIT).

Froelichia gracilis (Hook.) Moq. – SLENDER SNAKECOTTON; Native; Annual; Sp/Su/F/W; INT; G5 [Wh 1933, Bw 1978] (RJO 8135 BRIT).

Gossypianthus lanuginosus (Poir.) Moq. – WOOLLY COTTONFLOWER; Native; Perennial; Sp/Su/F; INT; G5 [Bw 1978] (KNT 2342 BRIT).

Guilleminia densa (Humb. & Bonpl. ex J.A. Schultes) Moq. var. *aggregata* Uline & Bray – DENSE COTTONFLOWER; Native; Perennial; Sp/Su/F; WEST; GU/GNR/TU/TNR (RJO 10175 BRIT).

Iresine heterophylla Standl. – STANDLEY BLOODLEAF; Native; Biennial; Sp/Su/F; WEST; G5 (RJO 10916 BRIT).

RUSCACEAE

Nolina texana S. Wats. – SACAJUISTA; Native; Perennial; Sp/Su/W; INT; G5 [Wh 1933, Bw 1978, WW 1982] (KNT 2471 BRIT).

SMILACACEAE

Smilax bona-nox L. – GREENBRIER; Native; Perennial; Sp/Su/F/W; EAST; G5 [Wh 1933, Bw 1978, WW 1982] (KNT 2472 BRIT).

TYPHACEAE

Typha domingensis Pers. – SOUTHERN CATTAIL; Native; Perennial; Sp/Su/F; INT; G4 (KNT 2874 BRIT).

Typha latifolia L. – BROADLEAF CATTAIL; Native; Perennial; Sp/Su/F/W; INT; G5 [WW 1982] (#).

Tidestromia lanuginosa (Nutt.) Standl. ssp. *lanuginosa* – WOOLLY TIDESTROMIA; Native; Annual; Sp/Su/F/W; WEST; T5 (KNT 1840 BRIT).

ANACARDIACEAE

Rhus aromatica Ait. var. *trilobata* (Nutt.) A. Gray ex S. Wats. – FRAGRANT SUMAC; Native; Perennial; Sp/Su/W; INT; T5 [Wh 1933, Bw 1978] (RJO 10668a BRIT).

Rhus lanceolata (A. Gray) Britt. – PRAIRIE FLAME-LEAF SUMAC; Native; Perennial; Su; INT; G4 [Wh 1933, Bw 1978] (KNT 2494 BRIT).

Rhus microphylla Engelm. ex A. Gray – LITTLELEAF SUMAC; Native; Perennial; Sp/W; WEST; G4 (RJO 7291 BRIT).

Rhus virens Lindheimer ex A. Gray var. *virens* – EVERGREEN SUMAC; Native; Perennial; Su; INT; T5 [Wh 1933, WW 1982] (*Taylor & Taylor* 13154 BRIT).

Toxicodendron radicans (L.) Kuntze – COMMON POISON IVY; Native; Perennial; Sp/Su; EAST; G5 [Wh 1933, Bw 1978, WW 1982] (KNT 2520 BRIT).

APIACEAE

Ammoselinum popei Torr. & A. Gray – PLAINS SAND PARSLEY; Native; Annual; Sp/Su/W; INT; G4 (RJO 11391e BRIT).

Atrema americanum DC. – PRAIRIE BISHOP; Native; Annual; Sp; EAST; GU/GNR/TU/TNR (RJO s.n. BRIT).

Berula erecta (Huds.) Coville – WATER PARSNIP; Native; Perennial; Sp/Su/F; INT; G4 (RJO 7291 BRIT).

Bupleurum rotundifolium L. – ROUNDLEAF THOROUGHWAX; Exotic; Annual; Sp/Su; (RJO 9080e BRIT).

Centella asiatica (L.) Urban – SPADELEAF; Native; Perennial; Sp/Su/F/W; EAST; G5 (RJO 8066e BRIT).

Chaerophyllum tainturieri Hook. – SMOOTH CHERVIL; Native; Annual; Sp/Su/W; EAST; G5 (RJO 10647e BRIT).

Daucus pusillus Michx. – SOUTHWESTERN CARROT; Native; Annual; Sp/Su/W; INT; G5 (KNT 2372 BRIT).

Hydrocotyle verticillata Thunb. var. *verticillata* – WHORLED PENNYWORT; Native; Perennial; Sp/Su; INT; T5 [Wh 1933, Bw 1978] (RJO 10821f BRIT).

Limnoscium pinnatum (DC.) Mathias & Constance – ARKANSAS DOGSHADE; Native; Annual; Sp/Su/W; EAST; G5 (RJO 10655e BRIT).

Polytaenia texana (Coul. & Rose) Mathias & Constance – TEXAS PARSLEY; Native; Perennial; Sp/Su; INT; G4 [Wh 1933] (RJO 7355e BRIT).

Ptilimnium capillaceum (Michx.) Raf. – THREADLEAF MOCK BISHOP WEED; Native; Annual; Sp/Su/F/W; EAST; G5 (RJO 11685c BRIT).

Ptilimnium nuttallii (DC.) Britt. – NUTTALL MOCK BISHOP WEED; Native; Annual; Sp/Su/F; EAST; G5 (RJO 7988e BRIT).

Sanicula canadensis L. var. *canadensis* – CANADA SANICLE; Native; Biennial; Sp/Su; EAST; T5 (RJO 10682e BRIT).

Sanicula odorata (Raf.) K.M. Pryer & L.R. Phillippe – CLUSTER SANICLE; Native; Perennial; Sp/Su; EAST; G5 (RJO 10659e BRIT).

Spermolepis echinata (Nutt. ex DC.) Heller – BRISTLY SCALESEED; Native; Annual; Sp/Su/W; INT; G5 (KNT 2532 BRIT).

Spermolepis inermis (Nutt. ex DC.) Mathias & Constance – SPREADING SCALESEED; Native; Annual; Sp/Su/W; INT; G5 (RJO 1073e BRIT).

Spermolepis laevis Nesom – SMOOTH SCALESEED; Native; Annual; Sp; INT; GU/GNR/TU/TNR (RJO 10638e BRIT).

**Torilis arvensis* (Huds.) Link – HEDGE-PARSLEY; Exotic; Annual; Sp/Su; [Bw 1978] (KNT 2459 BRIT).

Torilis nodosa (L.) Gaertn. – KNOTTED HEDGE-PARSLEY; Exotic; Annual; Sp; (RJO 10640e BRIT).

APOCYNACEAE

Apocynum cannabinum L. – HAIRY DOGBANE; Native; Perennial; Sp/Su/F; INT; G5 (RJO 11732e).

Asclepias asperula (Dcne.) Woods. ssp. *capricornu* (Woods.) Woods. – TRAILING ANTELOPEHORN; Native; Perennial; Sp/Su; INT; GU/GNR/TU/TNR [Bw 1978] (KNT 2403 BRIT).

Asclepias engelmanniana Woods. – ENGELMANN MILKWEED; Native; Perennial; Sp/Su; INT; G5 (RJO 10803 BRIT).

Asclepias oenotheroides Cham. & Schlecht. – PRIMROSE MILKWEED; Native; Perennial; Sp/Su/F/W; INT; G4 [Bw 1978, WW 1982] (KNT 2704 BRIT).

~*Asclepias texana* Heller – TEXAS MILKWEED; Native; Perennial; Sp/Su; INT; G4 (KNT 2757 BRIT).

Cynanchum barbigerum (Scheele) Shinners – BEARDED SWALLOW WORT; Native; Perennial; Sp/Su; INT; G5 [Wh 1933, Bw 1978, WW 1982] (RJO 6976 BRIT).

Cynanchum laeve (Michx.) Pers. – SMOOTH SWALLOW WORT; Native; Perennial; Su/F; EAST; G5 (KNT 2760 BRIT).

Cynanchum racemosum (Jacq.) Jacq. var. *unifarium* (Scheele) E. Sundell – TALAYOTE; Native; Perennial; Sp/Su/F; INT; T5 (KNT 2791 BRIT).

Funastrum crispum (Benth.) Schlechter – WAVYLEAF TWINEVINE; Native; Perennial; Sp/Su; WEST; G4 (KNT 2502 BRIT).

Matelea cynanchoides (Engelm.) Woods. – PRAIRIE MILKVINE; Native; Perennial; Sp/Su; EAST; G4 (KNT 3012 BRIT).

^*Matelea edwardsensis* Correll – PLATEAU MILKVINE; Native; Perennial; Sp; INT; G3 S3 (RJO 10499 BRIT).

~*Matelea reticulata* (Engelm. ex A. Gray) Woods. – NETVEIN MILKVINE; Native; Perennial; Sp/Su/F; INT; GU/GNR/TU/TNR [Wh 1933, Bw 1978] (KNT 2462 BRIT).

AQUIFOLIACEAE

Ilex decidua Walt. – POSSUMHAW; Native; Perennial; Sp/W; EAST; G5 (*J. Crutchfield* 1277 TEX).

Ilex vomitoria Ait. – YAUPON; Native; Perennial; Sp/Su; EAST; G5 [WW 1982] (#).

ARALIACEAE

Hydrocotyle umbellata L. – UMBEL PENNYWORT; Native; Perennial; Sp/Su/F/W; EAST; G5 (RJO 8055e BRIT).

ARISTOLOCHIACEAE

~*Aristolochia coryi* I.M. Johnston – CORY'S DUTCHMAN'S PIPE; Native; Perennial; Sp/Su; WEST; G4 (RJO 10647x BRIT).

Endodeca serpentaria (L.) Raf. – VIRGINIA SNAKEROOT; Native; Perennial; Sp/Su/F; EAST; G4 (KNT 2728 BRIT).

ASTERACEAE

Achillea millefolium – YARROW; Native; Perennial; Sp/Su/F/W; INT; G5 [Wh 1933, Bw 1978] (KNT 2368 BRIT).

Ageratina altissima (L.) King & H.E. Robins. var. *altissima* – WHITE SNAKEROOT; Native; Perennial; Su/F; EAST; T5 [Bw 1978, WW 1982] (#).

Ageratina havanensis (Kunth) King & H.E. Robins. – SHRUBBY BONESET; Native; Perennial; Su/F; INT; G5 [Wh 1933, Bw 1978, WW 1982] (KNT 2784 BRIT).

Amblyolepis setigera DC. – HUISACHE DAISY; Native; Annual; Sp; INT; G5 (RJO 11685f BRIT).

Ambrosia confertiflora DC. – FIELD RAGWEED; Native; Perennial; Sp/Su/F; WEST; G5 [Bw 1978] (KNT 2875 BRIT).

Ambrosia psilostachya DC. – WESTERN RAGWEED; Native; Annual/Perennial; Sp/Su/F; INT; G5 [Bw 1978] (KNT 2873 BRIT).

Ambrosia trifida L. – GIANT RAGWEED; Native; Annual; Sp/Su/F; INT; G5 (KNT 2939 BRIT).

Aphanostephus ramosissimus DC. – PLAINS LAZYDAISY; Native; Annual; Sp/Su/F/W; WEST; G5 (KNT 2701 BRIT).

Aphanostephus skirrhobasis (DC.) Trel. var. *skirrhobasis* – ARKANSAS LAZYDAISY; Native; Annual; Sp/W; INT; G5 [Wh 1933, Bw 1978, WW 1982] (Correll & Correll 12774 BRIT).

Artemisia ludoviciana Nutt. ssp. *ludoviciana* – WESTERN-SAGEBRUSH; Native; Perennial; Sp/Su/F; INT; T5 [Bw 1978] (Butterwick & Smith 3388 TEX).

Artemisia mexicana Willd. ex Spreng. – MEXICAN SAGEWORT; Native; Perennial; Su/F; INT; G5 (RJO 10918 BRIT).

Astranthium ciliatum (Raf.) Nesom – FRINGED WESTERN DAISY; Native; Annual; Sp; EAST; G5 [Wh 1933] (RJO 7336a BRIT).

Baccharis neglecta Britt. – ROOSEVELTWEED; Native; Perennial; Su/F; INT; G5 [WW 1982] (#).

Bradburia pilosa (Nutt.) Semple – SOFT CAMPHORWEED; Native; Annual; Su/F; EAST; G5 (RJO 8254 BRIT).

Brickellia cylindracea A. Gray & Engelm. – GRAVELBAR BRICKELLBUSH; Native; Perennial; Su/F; INT; G5 [Wh 1933, Bw 1978] (*Whitehouse s.n.* 00390876) TEX).

Calyptocarpus vialis Less. – STRAGGLER DAISY; Native; Perennial; Sp/Su/F/W; INT; G5 [Bw 1978] (KNT 2514 BRIT).

+*Carduus nutans* L. – NODDING THISTLE; Exotic; Biennial/Perennial; Sp/Su/F; (KNT 2407 BRIT).

Carduus pycnocephalus L. – SLENDER THISTLE; Exotic; Annual; Sp/Su; (Carr 10585 TEX).

+*Carduus tenuiflorus* W. Curtis – SLENDER THISTLE; Exotic; Annual; Sp/Su; (RJO 10678 BRIT).

+*Carthamus lanatus* L. – DISTAFF THISTLE; Exotic; Annual; Sp/Su/F; (RJO 10702 BRIT).

+*Centaurea melitensis* L. – MALTA STAR-THISTLE; Exotic; Annual/Biennial; Sp/Su/F; (KNT 2844 BRIT).

+*Centaurea solstitialis* L. – BARNABY STAR-THISTLE; Exotic; Annual; Sp/Su/F; (RJO 10823e BRIT).

Chaetopappa asteroides (Nutt.) DC. var. *asteroides* – LEASTDAISY; Native; Annual; Sp/Su; EAST; T4 [Wh 1933, Bw 1978, WW 1982] (KNT 2389 BRIT).

^*Chaetopappa bellidifolia* (A. Gray & Engelm.) Shinners – HAIRY LEASTDAISY; Native; Annual; Sp/W; INT; G4 (RJO 8330 BRIT).

Chloracantha spinosa (Benth.) Nesom – MEXICAN DEVILWEED; Native; Perennial; Sp/Su/F/W; WEST; G4 [Bw 1978] (RJO 10695e BRIT).

Cirsium texanum Buckl. – TEXAS THISTLE; Native; Biennial/Perennial; Sp/Su/F; INT; G5 [Wh 1933, Bw 1978, WW 1982] (KNT 2370 BRIT).

Cirsium undulatum (Nutt.) Spreng. – WAVYLEAF THISTLE; Native; Biennial/Perennial; Sp/Su/F; WEST; G5 (KNT 2976 BRIT).

Coreopsis basalis (A. Dietr.) Blake – GOLDENMANE COREOPSIS; Native; Annual; Sp/Su; INT; G5 [Wh 1933, Bw 1978] (KNT 2661 BRIT).

Coreopsis tinctoria Nutt. var. *tinctoria* – PLAINS COREOPSIS; Native; Annual/Biennial/Perennial; Sp/Su/F; INT; T5 [Bw 1978] (RJO 9267 BRIT).

Croptilon divaricatum (Nutt.) Raf. – SLENDER GOLDENWEED; Native; Annual; Su/F/W; EAST; G4 [WW 1982] (#).

^*Croptilon hookerianum* (Torr. & A. Gray) House var. *graniticum* (E.B. Sm.) E.B. Sm. – GRANITE SCRATCHDAISY; Native; Annual; Su/F/W; INT; GU/GNR/TU/TNR [Bw 1978] (RJO 8136 BRIT).

Croptilon hookerianum var. *hookerianum* – HOOKER SCRATCHDAISY; Native; Annual; Su/F; INT; GU/GNR/TU/TNR (RJO 8097 BRIT).

Diaperia candida (Torr. & A. Gray) Benth. & Hook. f. – SILVER EVAX;

- Native; Annual; Sp; EAST; G4 [Wh 1933, WW 1982] (*Tharp s.n.*[00002200] TEX).
- Diaperia prolifera* (Nutt. ex DC.) Nutt. – BIGHEAD EVAX; Native; Annual; Sp/Su; INT; G5 [Wh 1933, Bw 1978] (*RJO 10660b* BRIT).
- Diaperia verna* (Raf.) Morefield var. *verna* – MANYSTEM EVAX; Native; Annual; Sp/Su/W; INT; G5 [Wh 1933, Bw 1978] (*RJO 10662x* BRIT).
- Eclipta prostrata* (L.) L. – YERBA DE TAGO; Native; Annual/Perennial; Sp/Su/F/W; INT; G5 [Bw 1978] (*RJO 10825e* BRIT).
- Erigeron canadensis* L. – HORSETAIL CONYZA; Exotic; Annual/Biennial; Sp/Su/F/W; G5 [Wh 1933, Bw 1978, WW 1982] (*KNT 2702* BRIT).
- Erigeron divaricatus* Michx. – LOW CONYZA; Native; Annual; Sp/Su/F; INT; G5 (*RJO 10694e* BRIT).
- Erigeron geisei* Shinners – BASIN FLEABANE; Native; Annual; Sp; INT; G4 [Wh 1933] (*Tharp 44316* TEX).
- Erigeron modestus* A. Gray – ANNUAL FLEABANE; Native; Perennial; Sp/Su; WEST; G5 [Bw 1978, WW 1982] (*RJO 11393* BRIT).
- Erigeron strigosus* Muhl. ex Willd. var. *strigosus* – PRAIRIE FLEABANE; Native; Annual/Biennial; Sp/Su/F/W; EAST; T5 [Wh 1933, Bw 1978, WW 1982] (*Whitehouse 10288* BRIT).
- Eupatorium serotinum* Michx. – LATE EUPATORIUM; Native; Perennial; Su/F; EAST; G5 [Wh 1933, Bw 1978] (*KNT 2871* BRIT).
- Facelis retusa* (Lam.) Schultz-Bip. – ANNUAL TRAMPWEED; Exotic; Annual; Sp/Su/F; (*KNT 2453* BRIT).
- Gaillardia pulchella* Foug. var. *pulchella* – INDIAN BLANKET; Native; Annual/Biennial/Perennial; Sp/Su/F/W; INT; T4 [Wh 1933, Bw 1978] (*KNT 2401* BRIT).
- Gaillardia suavis* (A. Gray & Engelm.) Britt. & Rusby – RAYLESS GAILLARDIA; Native; Perennial; Sp/Su; INT; G5 (*RJO 10804* BRIT).
- Gamochoaeta calviceps* (Fern.) Cabrera – SICKLELEAF CUDWEED; Native; Annual; Sp/Su/F/W; EAST; GU/GNR/TU/TNR (*KNT 2740* BRIT).
- Gamochoaeta pensylvanica* (Willd.) Cabrera – PENNSYLVANIA CUDWEED; Exotic; Annual/Biennial; Sp/Su/F/W; [Bw 1978] (*KNT 2653* BRIT).
- Gamochoaeta purpurea* (L.) Cabrera – PURPLE CUDWEED; Native; Annual/Biennial; Sp/Su/F/W; EAST; G5 [Wh 1933, Bw 1978, WW 1982] (*KNT 2424* BRIT).
- Grindelia ciliata* (Nutt.) Spreng. – SAWLEAF DAISY; Native; Annual/Biennial; Su/F; INT; G4 (*RJO 11743e* BRIT).
- Grindelia lanceolata* Nutt. – TEXAS LANCEOLEAF GUMWEED; Native; Biennial/Perennial; Su/F; EAST; G4 (*RJO 8019* BRIT).
- Grindelia nuda* Wood – RAYLESS CURLYCUP GUMWEED; Native; Annual; Su/F; INT; G5 [Wh 1933, Bw 1978] (*KNT 2878* BRIT).
- Grindelia squarrosa* (Pursh) Dunal – CURLY-CUP GUMWEED; Native; Annual/Biennial/Perennial; Sp/Su/F; WEST; G5 [Bw 1978] (*RJO 10733a* BRIT).
- Gutierrezia sarothrae* (Pursh) Britt. & Rusby – BROOM SNAKEWEED; Native; Perennial; Sp/Su/F; WEST; G5 (*RJO 10805* BRIT).
- Gutierrezia texana* (DC.) Torr. & A. Gray var. *texana* – TEXAS BROOMWEED; Native; Annual/Perennial; Su/F; INT; G5 [Wh 1933, Bw 1978] (*KNT 2877* BRIT).
- Hedynois cretica* (L.) Dum.-Cours. – CRETANWEED; Exotic; Annual; Sp/W; (*RJO 11390e* BRIT).
- Helenium amarum* (Raf.) H. Rock var. *amarum* – YELLOW BASIN SNEEZEWEED; Native; Annual; Sp/Su/F/W; INT; T5 (*RJO 11677b* BRIT).
- Helenium amarum* (Raf.) H. Rock var. *badium* (A. Gray ex S. Wats.) Waterfall – BROWN BASIN SNEEZEWEED; Native; Annual; Sp/Su/F; INT; GU/GNR/TU/TNR [Wh 1933, Bw 1978, WW 1982] (*KNT 2755* BRIT).
- Helenium elegans* DC. var. *elegans* – ELEGANT SNEEZEWEED; Native; Annual; Sp/Su/F; INT; T4 (*RJO 8067* BRIT).
- Helenium microcephalum* DC. var. *microcephalum* – SMALLHEAD SNEEZEWEED; Native; Annual; Sp/Su/F/W; INT; GU/GNR/TU/TNR (*RJO 8068* BRIT).
- Helianthus annuus* L. – COMMON SUNFLOWER; Native; Annual; Sp/Su/F/W; INT; G5 [WW 1982] (#).
- Helianthus petiolaris* Nutt. – PRAIRIE SUNFLOWER; Native; Annual/Perennial; Sp/Su/F/W; WEST; G5 (*RJO 8078b* BRIT).
- Heterotheca stenophylla* (A. Gray) Shinners – NARROWLEAF CAMPHORWEED; Native; Perennial; Sp/Su/F; WEST; G4 [Bw 1978, WW 1982] (*KNT 2801* BRIT).
- Heterotheca subaxillaris* (Lam.) Britt. & Rusby ssp. *latifolia* (Buckl.) Semple – BROADLEAF CAMPHORWEED; Native; Annual; Sp/Su/F/W; INT; GU/GNR/TU/TNR [Wh 1933, Bw 1978] (*KNT 2686* BRIT).
- Hymenopappus scabiosaeus* L'Hér. var. *corymbosus* (Torr. & A. Gray) B.L. Turner – OLD PLAINSMAN; Native; Biennial; Sp/Su/W; INT; T4 [Wh 1933, Bw 1978] (*KNT 2525* BRIT).
- Hypochaeris glabra* L. – SMOOTH CAT'S EAR; Exotic; Annual; Sp/Su/F/W; (*KNT 2973* BRIT).
- Iva asperifolia* Less. var. *angustifolia* (Nutt. ex DC.) B.L. Turner – RAG MARSHLEAF; Native; Annual/Biennial; Su/F; EAST; T5 [Wh 1933] (*RJO 8069* BRIT).
- Krigia caespitosa* (Raf.) Chambers – WEEDY DWARF DANDELION; Native; Annual; Sp/Su/F; EAST; G5 (*KNT 2468* BRIT).
- Krigia dandelion* (L.) Nutt. – TUBER DWARF DANDELION; Native; Perennial; Sp/Su; EAST; G5 (*KNT 2738* BRIT).
- Krigia virginica* (L.) Willd. – VIRGINIA DWARF DANDELION; Native; Annual; Sp/Su/F; EAST; G5 [Wh 1933] (*Tharp 7434* TEX).
- Lactuca ludoviciana* (Nutt.) Riddell – LOUISIANA LETTUCE; Native; Biennial/Perennial; Sp/Su/F; INT; G4 [Wh 1933, Bw 1978, WW 1982] (*McCart 5679* TEX).
- Lactuca seriola* L. – PRICKLY LETTUCE; Exotic; Annual/Biennial; Sp/Su/F; (*KNT 2790* BRIT).
- Liatris punctata* Hook. var. *punctata* – DOTTED GAYFEATHER; Native; Perennial; Su; INT; T5 [Wh 1933, Bw 1978] (*KNT 2904* BRIT).
- Lygodesmia texana* (Torr. & A. Gray) Greene ex Small – TEXAS SKEL-ETONPLANT; Native; Perennial; Sp/Su/F; INT; G5 [Bw 1978] (*KNT 2484* BRIT).
- Melampodium leucanthum* Torr. & A. Gray – PLAINS BLACKFOOT DAISY; Native; Perennial; Sp/Su/F/W; WEST; G5 (*KNT 2430* BRIT).
- Packera tampicana* (DC.) C. Jeffrey – BUTTERWEED; Native; Annual; Sp; INT; G5 (*RJO 7408* BRIT).
- [^]*Packera texensis* R. O'Kennon & D.K. Trock – TEXAS GRANITE GROUNDSEL; Native; Perennial; Sp/W; INT; G2 S2 [Wh 1933] (*KNT 2975* BRIT).
- Palafoxia callosa* (Nutt.) Torr. & A. Gray – CALLOUSED PALAFOX; Native; Annual; Su/F; INT; G4 [Wh 1933, Bw 1978] (*KNT 2699* BRIT).
- [^]*Pectis angustifolia* Torr. var. *fastigiata* (A. Gray) Keil – CROWNSEED PECTIS; Native; Annual; Sp/Su/F; INT; GU/GNR/TU/TNR (*RJO 10661e* BRIT).
- Pinaropappus roseus* (Less.) Less. – WHITE ROCKLETTUCE; Native; Perennial; Sp/Su/F; INT; G5 [Wh 1933] (*KNT 2529* BRIT).
- Pluchea camphorata* (L.) DC. – CAMPHOR PLUCHEA; Native; Annual/Perennial; Su/F; EAST; G5 [WW 1982] (#).
- Pluchea odorata* (L.) Cass. var. *odorata* – PURPLE PLUCHEA; Native; Annual/Perennial; Sp/Su/F; INT; T5 [Wh 1933, Bw 1978] (*KNT 2870* BRIT).
- Pseudognaphalium canescens* (DC.) A. Anderb. ssp. *canescens* – WRIGHT CUDWEED; Native; Annual/Biennial/Perennial; Sp/Su/F; D-WEST; T4 [Wh 1933, Bw 1978, WW 1982] (*RJO 10957* BRIT).
- Pseudognaphalium luteoalbum* (L.) Hilliard & Burt – JERSEY RABBIT-TOBACCO; Exotic; Annual; Sp/Su/F/W; (*Carr & Wright 7398* TEX).
- Pseudognaphalium pringlei* (A. Gray) A. Anderb. – PRINGLE'S RABBIT-TOBACCO; Native; Annual; Su/F; D-WEST; G4 [Bw 1978] (*Butterwick & Lamb 3361* TEX).
- Pseudognaphalium viscosum* (Kunth) A. Anderb. – CLAMMY CUDWEED; Native; Annual/Biennial; Su/F; D-WEST; GU/GNR/TU/TNR [WW 1982] (#).
- Pyrrhopappus carolinianus* (Walt.) DC. – CAROLINA DESERT-CHICORY; Native; Annual/Biennial; Sp/Su/F; EAST; G5 (*KNT 2979* BRIT).

Pyrrhopappus grandiflorus (Nutt.) Nutt. – TUBEROUS DESERT-CHICORY; Native; Perennial; Sp/Su/W; INT; G5 (KNT 3022 BRIT).

Pyrrhopappus pauciflorus (D. Don) DC. – SMALLFLOWER DESERT-CHICORY; Native; Annual/Perennial; Sp/Su; INT; G5 [WW 1982] (#).

Ratibida columnifera (Nutt.) Woot. & Standl. – PRAIRIE CONEFLOWER; Native; Perennial; Sp/Su/F; INT; G5 [Bw 1978] (KNT 2363 BRIT).

Rudbeckia fulgida Ait. var. *umbrosa* (C.L. Boynt. & Beadle) Cronq. – MARSH CONEFLOWER; Native; Perennial; Su/F; D-EAST; T5 (RJO 7431 BRIT).

Rudbeckia hirta L. var. *hirta* – BROWN-EYED SUSAN; Native; Annual/Biennial/Perennial; Sp/Su/F; EAST; T4 [Wh 1933, Bw 1978] (KNT 2706 BRIT).

Senecio ampullaceus Hook. – TEXAS GROUNDSEL; Native; Annual; Sp; INT; G4 [Wh 1933, Bw 1978] (KNT 2478 BRIT).

Solidago nemoralis Ait. var. *longipetiolata* (Mackenzie & Bush) Palmer & Steyermark – WESTERN OLDFIELD GOLDENROD; Native; Perennial; Sp/Su/F/W; INT; T5 (RJO 10742e BRIT).

Solidago radula Nutt. – ROUGH GOLDENROD; Native; Perennial; Su/F/W; EAST; G5 [Wh 1933, Bw 1978] (Whitehouse 10309 BRIT).

Soliva sessilis Ruiz & Pavón – FIELD BURRWEED; Exotic; Annual; Sp/Su/F; (KNT 2993 BRIT).

Sonchus asper (L.) Hill – PRICKLY SOWTHISTLE; Exotic; Annual; Sp/Su/F/W; [Wh 1933] (KNT 2446 BRIT).

Symphytotrichum divaricatum (Nutt.) Nesom – HERBA DEL MARRANO; Native; Annual/Biennial; Su/F; INT; G5 [Bw 1978] (KNT 2872 BRIT).

Symphytotrichum ericoides (L.) Nesom var. *ericoides* – HEATH ASTER; Native; Perennial; Su/F; EAST; T5 (KNT 2919 BRIT).

Symphytotrichum fendleri A. Gray – FENDLER'S AMERICAN-ASTER; Native; Perennial; Su/F; WEST; G4 (RJO 10176e BRIT).

Symphytotrichum patens (Ait.) Nesom var. *patens* – SKYDROP ASTER; Native; Perennial; Su/F; EAST; T5 (KNT 2916 BRIT).

Symphytotrichum sericeum (Vent.) Nesom – SILKY ASTER; Native; Perennial; Su/F; EAST; G5 (RJO 10981 BRIT).

Tetragonotheca texana (A. Gray) Engelm. & A. Gray – SQUARE-BUD DAISY; Native; Perennial; Su/F; INT; G5 (RJO 8894e BRIT).

Thelesperma filifolium (Hook.) A. Gray var. *filifolium* – COMMON GREENTHREAD; Native; Annual/Perennial; Sp/Su; INT; T4 [Wh 1933, Bw 1978] (KNT 2381 BRIT).

Thelesperma simplicifolium (A. Gray) A. Gray – SLENDER GREENTHREAD; Native; Annual/Perennial; Sp/Su/F; INT; G4 [Bw 1978, WW 1982] (Butterwick & Lamb 2974 TEX).

Thymophylla pentachaeta (DC.) Small – COMMON DOGWEEED; Native; Perennial; Sp/Su/F; WEST; G5 (KNT 2539 BRIT).

Thymophylla tenuiloba (DC.) Small var. *tenuiloba* – BRISTLELEAF DOGWEEED; Native; Annual/Perennial; Sp/Su/F/W; INT; T5 [Bw 1978] (RJO 7381 BRIT).

Tragopogon dubius Scop. – YELLOW SALSIFY; Exotic; Annual/Biennial; Sp/Su; (RJO 10822e BRIT).

Verbesina encelioides (Cav.) Benth. & Hook. f. ex A. Gray – COWPEN DAISY; Native; Annual; Sp/Su/F; WEST; G5 [Bw 1978] (KNT 2658 BRIT).

Verbesina virginica L. – FROSTWEED; Native; Biennial/Perennial; Su/F; EAST; G5 [Wh 1933, Bw 1978] (KNT 2902 BRIT).

Vernonia baldwinii Torr. – Native; Perennial; Su/F; INT; G5 [Wh 1933] (Whitehouse s.n.100009129) TEX).

Wedelia acapulcensis Kunth var. *hispidula* (Kunth) Strother – ROUGH ZEXMENIA; Native; Perennial; Su/F; INT; GU/GNR/TU/TNR [Wh 1933] (RJO 10734e BRIT).

Xanthisma texanum DC. ssp. *drummondii* (Torr. & A. Gray) Semple – SLEEPY DAISY; Native; Annual; Sp/Su/F; INT; T5 [Wh 1933, Bw 1978, WW 1982] (KNT 2543 BRIT).

Xanthium strumarium L. – COCKLEBUR; Native; Annual; Sp/Su/F; INT; G5 [Bw 1978] (KNT 2869 BRIT).

BERBERIDACEAE

Mahonia trifoliolata (Moric.) Fedde – AGRITO; Native; Perennial; Sp/W; INT; G5 [Bw 1978, WW 1982] (KNT 2442 BRIT).

BORAGINACEAE

Lappula redowskii (Hornem.) Greene – FLATSPINE STICKSEED; Native; Annual/Biennial; Sp/Su/F/W; WEST; G5 (RJO 8330c BRIT).

Lithospermum incisum Lehm. – PUCCOON; Native; Perennial; Sp/Su/F/W; INT; G5 [Wh 1933, Bw 1978] (Whitehouse & Tharp 8736 TEX).

Myosotis macrosperma Engelm. – SPRING FORGET-ME-NOT; Native; Annual; Sp/Su/W; EAST; G5 (RJO 8332b BRIT).

Myosotis verna Nutt. – EARLY FORGET-ME-NOT; Native; Annual/Biennial; Sp/Su/W; EAST; G5 (RJO 10506 BRIT).

Nama hispidum A. Gray – ROUGH NAMA; Native; Annual; Sp/Su/F/W; WEST; G4 [Wh 1933, Bw 1978, WW 1982] (KNT 1832 BRIT).

Nama jamaicense L. – FIDDLELEAF NAMA; Native; Annual; Sp/Su/F; INT; G5 (KNT 2842 BRIT).

Nemophila phacelioides Nutt. – LARGEFLOWER BABY BLUE EYES; Native; Annual; Sp/Su/W; EAST; G5 (KNT 3020 BRIT).

Phacelia congesta Hook. – BLUECURLS; Native; Annual/Biennial; Sp/Su/F/W; INT; G5 [Wh 1933, Bw 1978, WW 1982] (KNT 2360 BRIT).

BRASSICACEAE

Brassica nigra (L.) W.D.J. Koch – BLACK MUSTARD; Exotic; Annual; Sp/Su/F; (RJO 8482a BRIT).

Capsella bursa-pastoris (L.) Medik. – SHEPARD'S PURSE; Exotic; Annual; Sp/Su/F/W; (RJO 8341 BRIT).

Cardamine parviflora L. – SAND BITTERCRESS; Native; Annual; Sp/Su/W; EAST; G5 [Wh 1933] (RJO 8140 BRIT).

Cardamine pensylvanica Muhl. ex Willd. – PENNSYLVANIA BITTERCRESS; Native; Annual/Biennial/Perennial; Sp/Su/F/W; INT; G5 (RJO 7386 BRIT).

Descurainia pinnata (Walt.) Britt. ssp. *pinnata* – YELLOW TANSYMUSTARD; Native; Annual/Biennial; Sp/W; EAST; T5 [Bw 1978, WW 1982] (KNT 2358 BRIT).

Draba cuneifolia Nutt. ex Torr. & A. Gray var. *cuneifolia* – WEDGELEAF DRABA; Native; Annual; Sp/W; INT; T5 [Wh 1933, Bw 1978] (RJO 7290 BRIT).

Draba platycarpa Torr. & A. Gray – BROADPOD DRABA; Native; Annual; Sp; INT; G4 [Wh 1933, Bw 1978, WW 1982] (Whitehouse s.n. [00355521] TEX).

Erysimum capitatum (Dougl. ex Hook.) Greene – PLAINS WALLFLOWER; Native; Biennial/Perennial; Sp/Su/F/W; WEST; G5 (RJO 7384 BRIT).

Erysimum repandum L. – SPREADING WALLFLOWER; Exotic; Annual; Sp/Su/W; (RJO 10501 BRIT).

Lepidium austrinum Small – SOUTHERN PEPPERGRASS; Native; Annual/Biennial; Sp/W; INT; G5 (RJO 10515p BRIT).

Lepidium densiflorum Schrad. – PRAIRIE PEPPERGRASS; Native; Annual/Biennial; Sp/Su/F/W; INT; G5 (RJO 10495 BRIT).

Lepidium ruderale L. – BIGBEND PEPPERGRASS; Exotic; Annual/Biennial; Sp/Su/F/W; (KNT 2352 BRIT).

Lepidium virginicum L. ssp. *menziesii* (DC.) Thellung – VIRGINIA PEPPERGRASS; Native; Annual/Biennial/Perennial; Sp/Su/W; WEST; GU/GNR/TU/TNR [Wh 1933, Bw 1978, WW 1982] (RJO 8391 BRIT).

Lepidium virginicum L. ssp. *virginicum* – VIRGINIA PEPPERGRASS; Native; Annual/Biennial/Perennial; Sp/Su/F; EAST; T5 (RJO 11712 BRIT).

Nasturtium officinale Ait. f. – WATERCRESS; Exotic; Perennial; Sp/Su/F/W; [Bw 1978] (KNT 2378 BRIT).

Physaria argyraea (A. Gray) O'Kane & Al-Shehbaz – SILVERY BLADDERPOD; Native; Biennial/Perennial; Sp/W; INT; G5 [Wh 1933] (Taylor & Taylor 13227 BRIT).

Physaria densiflora (A. Gray) O'Kane & Al-Shehbaz – DENSEFLOWER BLADDERPOD; Native; Annual/Biennial; Sp/W; INT; G4 [Wh 1933, Bw 1978, WW 1982] (RJO 891a BRIT).

Physaria fendleri (A. Gray) O'Kane & Al-Shehbaz – FENDLER BLADDERPOD; Native; Perennial; Sp/Su; WEST; G5 [Wh 1933] (KNT 2762 BRIT).

Physaria gordonii (A. Gray) O'Kane & Al-Shehbaz – GORDON BLADDERPOD; Native; Annual/Biennial/Perennial; Sp/Su/W; WEST; G5 [Wh 1933] (Mears 1400 TEX).

Physaria gracilis (Hook.) O'Kane & Al-Shehbaz ssp. *gracilis* – WHITE BLADDERPOD; Native; Annual/Biennial; Sp/Su/W; INT; T4 [Wh 1933] (KNT 2689 BRIT).

[^]*Physaria recurvata* (Engelm. ex A. Gray) O'Kane & Al-Shehbaz – SLENDER BLADDERPOD; Native; Annual/Biennial; Sp/W; INT; G4 [Wh 1933] (KNT 2366 BRIT).

Planodes virginicum (L.) Greene – VIRGINIA SIBARA; Native; Annual/Biennial; Sp/W; EAST; G5 (RJO 8552 BRIT).

Rorippa palustris (L.) Bess. – BOG MARSHCRESS; Native; Annual/Biennial/Perennial; Sp/Su/F/W; INT; G5 (RJO s.n. BRIT).

Rorippa teres (Michx.) R. Stuckey – TANSEYLEAF YELLOWCRESS; Native; Annual/Biennial; Sp/Su/F/W; EAST; G5 (Crutchfield 1283 TEX).

Sisymbrium irio L. – ROCKETMUSTARD; Exotic; Annual; Sp/Su/F/W; (RJO 7979 BRIT).

[^]*Streptanthus petiolaris* A. Gray – BRAZOS JEWELFLOWER; Native; Annual/Biennial; Sp; INT; G4 [Wh 1933] (RJO 7385 BRIT).

CACTACEAE

Cylindropuntia leptocaulis (DC.) F.M. Knuth – TASAJILLO; Native; Perennial; Sp/Su; INT; G4 [Wh 1933, Bw 1978] (KNT 2513 BRIT).

[~]*Echinocereus coccineus* Engelm. var. *paucispinus* (Engelm.) Ferguson – FEWSPINE CLARETCUP; Native; Perennial; Sp/Su; INT; T3 S3 [Wh 1933, Bw 1978, WW 1982] (KNT 2511 BRIT).

Echinocereus reichenbachii (Terscheck ex Walp.) hort. ex Haage ssp. *reichenbachii* – LACE CACTUS; Native; Perennial; Sp/Su; INT; T4 [Wh 1933, Bw 1978, WW 1982] (#).

Escobaria missouriensis (Sweet) D.R. Hunt – MISSOURI FOXTAIL CACTUS; Native; Perennial; Su; INT; G5 (#).

[~]*Hamatocactus bicolor* (Terán & Berl.) I.M. Johnston – MINIATURE BARREL CACTUS; Native; Perennial; Sp/Su/F; INT; G4 S3 (#).

Mammillaria heyderi Muehlenpfordt – LITTLE NIPPLE CACTUS; Native; Perennial; Sp/W; WEST; G4 (#).

Opuntia engelmannii Salm-Dyck ex Engelm. – CACTUS APPLE; Native; Perennial; Sp/Su; WEST; G5 (#).

Opuntia humifusa (Raf.) Raf. – EASTERN PRICKLYPEAR; Native; Perennial; Sp/Su/F/W; EAST; G5 (KNT 2509 BRIT).

Opuntia lindheimeri Engelm. – TEXAS PRICKLYPEAR; Native; Perennial; Sp; INT; G4 [Wh 1933, WW 1982] (KNT 2903 BRIT).

Opuntia macrorhiza Engelm. – TWISTSPINE PRICKLYPEAR; Native; Perennial; Sp/Su; INT; G5 (#).

Opuntia phaeacantha Engelm. – BROWNSPINE PRICKLYPEAR; Native; Perennial; Sp/Su; WEST; G5 [Bw 1978, WW 1982] (KNT 2510 BRIT).

CAMPANULACEAE

[^]*Campanula reverchonii* A. Gray – BASIN BELLFLOWER; Native; Annual; Sp/Su; INT; G2 S2 [Wh 1933, Bw 1978, WW 1982] (RJO 10500c BRIT).

Lobelia cardinalis L. – CARDINAL FLOWER; Native; Perennial; Sp/Su/F; INT; G5 [Wh 1933] (Whitehouse s.n. [00020926] TEX).

[~]*Triodanis coloradoensis* (Buckl.) McVaugh – COLORADO VENUS LOOKINGGLASS; Native; Annual; Sp; INT; G4 (RJO 6870c BRIT).

Triodanis leptocarpa (Nutt.) Nieuwl. – SLIMPOD VENUS LOOKINGGLASS; Native; Annual; Sp/Su/F; INT; G5 [Wh 1933, Bw 1978] (RJO 7967 BRIT).

Triodanis perfoliata (L.) Nieuwl. ssp. *biflora* (Ruiz & Pavón) Lammers – SMALL VENUS LOOKINGGLASS; Native; Annual; Sp/Su/F; INT; T5 [Wh 1933, Bw 1978, WW 1982] (KNT 2362 BRIT).

Triodanis perfoliata (L.) Nieuwl. ssp. *perfoliata* – CLASPING VENUS LOOKINGGLASS; Native; Annual; Sp/Su/F; INT; T5 (RJO 6869p BRIT).

CANNABACEAE

Celtis laevigata Willd. – SUGAR HACKBERRY; Native; Perennial; Sp/Su/F; EAST; G5 [Bw 1978] (RJO 7293 BRIT).

Celtis reticulata Torr. – NETLEAF HACKBERRY; Native; Perennial; Sp; WEST; G5 [Wh 1933, Bw 1978, WW 1982] (KNT 2763 BRIT).

Celtis tenuifolia Nutt. – DWARF HACKBERRY; Native; Perennial; Sp/F; EAST; G5 (KNT 2497 BRIT).

CAPRIFOLIACEAE

Lonicera albiflora Torr. & A. Gray – TEXAS WHITE HONEYSUCKLE; Native; Perennial; Sp/Su/F/W; INT; G4 [Wh 1933, Bw 1978, WW 1982] (RJO 8892 BRIT).

CARYOPHYLLACEAE

Arenaria serpyllifolia L. – THYMELEAF SANDWORT; Exotic; Annual; Sp/Su/W; (RJO 11393c BRIT).

Cerastium brachypodium (Engelm. ex A. Gray) B.L. Robins. – SHORT-STALK CHICKWEED; Native; Perennial; Sp/Su/W; INT; G5 [Wh 1933] (KNT 2380 BRIT).

Cerastium glomeratum Thuill. – GLOMERATE CHICKWEED; Exotic; Annual; Sp/Su/W; (RJO 8552p BRIT).

Loeflingia squarrosa Nutt. – LOEFLINGIA; Native; Annual; Sp/W; WEST; G5 [Wh 1933, Bw 1978] (RJO 11697 BRIT).

[~]*Paronychia lindheimeri* Engelm. ex A. Gray – LINDHEIMER WHITLOW WORT; Native; Annual/Biennial; Sp/Su/F; INT; G4 [Wh 1933, Bw 1978, WW 1982] (KNT 2879 BRIT).

[^]*Paronychia setacea* Torr. & A. Gray – BRISTLE WHITLOW WORT; Native; Annual/Perennial; Sp/Su; INT; G2 S2S3 (RJO 10709a BRIT).

Polycarpon tetraphyllum (L.) L. – FOURLEAF MANYSEED; Exotic; Annual/Biennial/Perennial; Sp/Su/F/W; [Bw 1978, WW 1982] (KNT 2341 BRIT).

Sagina decumbens (Ell.) Torr. & A. Gray – TRAILING PEARLWORT; Native; Annual; Sp/Su/W; INT; G5 [Wh 1933] (RJO 8385 BRIT).

Silene antirrhina L. – SLEEPY CATCHFLY; Native; Annual; Sp/Su/F/W; INT; G5 [Wh 1933] (KNT 2399 BRIT).

⁺*Stellaria media* (L.) Vill. – CHICKWEED; Exotic; Annual/Perennial; Sp/Su/F/W; (RJO 8332a BRIT).

Stellaria pallida (Dumort.) Crépin – LESSER CHICKWEED; Exotic; Annual/Perennial; Sp; (RJO 8882b BRIT).

CISTACEAE

Crocanthemum georgianum (Chapm.) Barnh. – GEORGIA ROCKROSE; Native; Perennial; Sp; EAST; G4 [Wh 1933, Bw 1978, WW 1982] (KNT 2440 BRIT).

Lechea mucronata Raf. – HAIRY PINWEED; Native; Perennial; Sp/Su/F; EAST; G5 (RJO 10655c BRIT).

Lechea san-sabeana (Buckl.) Hodgdon – SAN SABA PINWEED; Native; Perennial; Sp; INT; G4 [Bw 1978, WW 1982] (RJO 9075a BRIT).

Lechea tenuifolia Michx. – NARROWLEAF PINWEED; Native; Perennial; Sp/Su/F; EAST; G5 [Wh 1933, Bw 1978, WW 1982] (RJO 10162c BRIT).

CLEOMACEAE

Polanisia dodecandra (L.) DC. ssp. *trachysperma* (Torr. & A. Gray) Iltis – CLAMMYWEED; Native; Annual; Sp/Su/F; INT; T5 [Bw 1978] (RJO 9809c BRIT).

Polanisia erosa (Nutt.) Iltis ssp. *erosa* – LARGE CLAMMYWEED; Native; Annual; Sp/Su/F; EAST; T5 (RJO 11689c BRIT).

CONVOLVULACEAE

Calystegia macounii (Greene) Brummitt – MACOUN'S FALSE BINDWEED; Native; Perennial; Sp/Su; INT; G5 (RJO 9810 BRIT).

Cuscuta cuspidata Engelm. – CUSP DODDER; Native; Perennial; Su/F; INT; G5 (KNT 2997 BRIT).

Convolvulus equitans Benth. – TEXAS BINDWEED; Native; Annual/Perennial; Sp/Su/F/W; INT; G5 [Bw 1978] (KNT 2364 BRIT).

Cuscuta exaltata Engelm. – TREE DODDER; Native; Annual; Su/F; INT; G3 S3 [Wh 1933, Bw 1978, WW 1982] (KNT 1846 BRIT).

- Cuscuta glabrior* (Engelm.) Yuncker – GLABROUS DODDER; Native; Perennial; Su/F; INT; G5 (KNT 1846 BRIT).
- Cuscuta indecora* Choisy var. *indecora* – SHOWY DODDER; Native; Perennial; Su/F; INT; T3 [Wh 1933, Bw 1978] (Tharp 3 TEX).
- Cuscuta indecora* Choisy var. *longisepala* Yuncker – LARGE-SEED DODDER; Native; Perennial; Su/F/W; EAST; GU/GNR/TU/TNR (KNT 2519 BRIT).
- Cuscuta obtusiflora* Kunth – RED DODDER; Native; Perennial; Sp/Su/F; INT; G5 (KNT 2725 BRIT).
- Cuscuta pentagona* Engelm. var. *pubescens* (Engelm.) Yuncker – FIELD DODDER; Native; Perennial; Sp/Su/F/W; INT; GU/GNR/TU/TNR (KNT 2771 BRIT).
- [^]*Dichondra recurvata* Tharp & M.C. Johnston – PLATEAU PONYFOOT; Native; Perennial; Sp/W; EAST; G4 [Wh 1933, WW 1982] (RJO 7388 BRIT).
- Evolvulus alsinoides* (L.) L. var. *angustifolius* Torr. – SLENDER EVOLVULUS; Native; Perennial; Sp/Su/F/W; INT; GU/GNR/TU/TNR [Wh 1933, Bw 1978] (Tharp s.n.[00394480] TEX).
- Evolvulus nuttallianus* J.A. Schultes – HAIRY EVOLVULUS; Native; Perennial; Sp/Su/W; INT; G5 (RJO 10953d BRIT).
- Evolvulus sericeus* Sw. var. *sericeus* – SILKY EVOLVULUS; Native; Perennial; Sp/Su/F; INT; T4 [Wh 1933, Bw 1978] (KNT 2351 BRIT).
- Ipomoea cordatotriloba* Dennst. var. *torreyana* (A. Gray) D. Austin – SHARPPOD MORNINGGLORY; Native; Perennial; Sp/Su/F; INT; T4 [Wh 1933, Bw 1978, WW 1982] (KNT 2467 BRIT).
- [^]*Ipomoea costellata* Torr. var. *edwardsensis* R. O'Kennon & Nesom – PLATEAU MORNINGGLORY; Native; Annual; Su/F; INT; T2 S2 [Bw 1978] (KNT 2732 BRIT).
- Ipomoea lindheimeri* A. Gray – LINDHEIMER MORNING-GLORY; Native; Perennial; Sp/Su/F; WEST; G4 [Wh 1933, Bw 1978, WW 1982] (RJO 9681c BRIT).

CORNACEAE

- Cornus drummondii* C.A. Mey. – ROUGHLEAF DOGWOOD; Native; Perennial; Sp/Su; EAST; G5 [Wh 1933] (Tharp s.n.[00388680] TEX).

CRASSULACEAE

- Crassula aquatica* (L.) Schoenl. – WATER CRASSULA; Native; Annual; Sp/Su/F; INT; G5 [WW 1982] (Carr 3813 TEX).
- Crassula drummondii* (Torr. & A. Gray) Fedde – SMALL-LEAF PYGMYWEED; Native; Annual; Sp; EAST; GU/GNR/TU/TNR (KNT 2985 BRIT).
- Crassula longipes* (Rose) Bywater & Wickens – SMALL-SEED PYGMYWEED; Native; Annual; Sp/W; EAST; GU/GNR/TU/TNR (RJO 7198 BRIT).
- Crassula solieri* (C. Gay) Meigen – SMOOTH-SEED PYGMYWEED; Native; Annual; Sp/W; WEST; G4 (Carrker 47287 TEX).
- Sedum nuttallii* Torr. & James ex Eat. – YELLOW SEDUM; Native; Annual; Sp/Su; INT; G5 [Wh 1933, Bw 1978, WW 1982] (KNT 2395 BRIT).

CUCURBITACEAE

- Cucumis melo* L. – CANTALOUPE; Exotic; Annual; Sp/Su/F; (RJO 9671e BRIT).
- Cucurbita foetidissima* Kunth – FETID GOURD; Native; Perennial; Sp/Su; WEST; G5 (KNT 2655 BRIT).
- Cyclanthera dissecta* (Torr. & A. Gray) Arn. – CUTLEAF CYCLANTHERA; Native; Annual; F; INT; G5 [Wh 1933, Bw 1978] (KNT 2793 BRIT).
- Ibervillea lindheimeri* (A. Gray) Greene – LINDHEIMER GLOBEBERRY; Native; Perennial; Sp/Su/F; INT; G4 [Wh 1933, Bw 1978, WW 1982] (RJO 7757 BRIT).
- Melothria pendula* L. var. *pendula* – DROOPING MELONETTE; Native; Perennial; Sp/Su/F/W; EAST; T5 (RJO 7768 BRIT).

EBENACEAE

- [~]*Diospyros texana* Scheele – TEXAS PERSIMMON; Native; Perennial; Sp/W; INT; G5 [Wh 1933, Bw 1978, WW 1982] (KNT 2357 BRIT).
- Diospyros virginiana* L. – VIRGINIA PERSIMMON; Native; Perennial; Sp/Su; EAST; G5 (RJO 10511b BRIT).

ELATINACEAE

- Bergia texana* (Hook.) Seub. ex Walp. – TEXAS BERGIA; Native; Annual; Perennial; Sp/Su/F; INT; G5 (RJO 9685p BRIT).
- Elatine brachysperma* A. Gray – SHORTSEED WATERWORT; Native; Annual; Sp/Su/F/W; WEST; G5 [Wh 1933, WW 1982] (KNT 2507 BRIT).
- Elatine triandra* Schkuhr – AMERICAN WATERWORT; Exotic; Annual; Su/F; (RJO 10949e BRIT).

EUPHORBIACEAE

- Acalypha gracilens* A. Gray – SLENDER COPPERLEAF; Native; Annual; Su/F; EAST; G5 [Wh 1933, WW 1982] (RJO 10943d BRIT).
- Acalypha monococca* (Engelm. ex A. Gray) L. Mill. & Gandhi – ONESEED COPPERLEAF; Native; Annual; Sp/Su/F; EAST; G4 [Wh 1933, Bw 1978] (KNT 1826 BRIT).
- Acalypha monostachya* Cav. – SOFT COPPERLEAF; Native; Perennial; Su/F; INT; G5 (RJO 10622f BRIT).
- Acalypha ostryifolia* Riddell – HORNBEAMLEAF COPPERLEAF; Native; Annual; Su/F; EAST; G5 (RJO 10818e BRIT).
- Acalypha phleoides* Cav. – LINDHEIMER COPPERLEAF; Native; Perennial; Sp/Su/F; WEST; G5 [Wh 1933] (Whitehouse s.n.[00036838] TEX).
- Acalypha radians* Torr. – ROUND COPPERLEAF; Native; Perennial; Su/F; INT; G5 (RJO 10136f BRIT).
- Acalypha virginica* L. – VIRGINIA COPPERLEAF; Native; Annual; Su/F; EAST; G5 (RJO 8069d BRIT).
- [^]*Argythamnia simulans* Ingram – PLATEAU WILDMERCURY; Native; Perennial; Sp/Su/W; INT; G5 (RJO 11680 BRIT).
- Cnidocolus texanus* (Muell.-Arg.) Small – BULL NETTLE; Native; Perennial; Sp/Su/F; INT; G4 [Bw 1978] (KNT 2402 BRIT).
- Croton capitatus* Michx. – HOGWORT; Native; Annual; Sp/Su/F/W; EAST; G5 (RJO 8141b BRIT).
- Croton dioicus* Cav. – GRASSLAND CROTON; Native; Perennial; Su/F; WEST; G5 (RJO 7972 BRIT).
- Croton glandulosus* L. var. *lindheimeri* Muell.-Arg. – LINDHEIMER'S CROTON; Native; Annual; Sp/Su/F/W; INT; GU/GNR/TU/TNR (KNT 2829 BRIT).
- Croton glandulosus* L. var. *septentrionalis* Muell.-Arg. – NORTHERN CROTON; Native; Annual; Sp/Su/F/W; EAST; T5 [Wh 1933, Bw 1978] (RJO 6970p BRIT).
- Croton lindheimeri* (Engelm. & A. Gray) Engelm. & A. Gray ex Wood – WOOLLY CROTON; Native; Annual; Su/F; INT; GU/GNR/TU/TNR (KNT 2894 BRIT).
- Croton lindheimerianus* Scheele var. *lindheimerianus* – THREESEED CROTON; Native; Annual; Sp/Su/F; INT; GU/GNR/TU/TNR [Bw 1978] (KNT 2739 BRIT).
- Croton monanthogynus* Michx. – ONESEED CROTON; Native; Annual; Sp/Su/F; INT; G5 [Wh 1933, Bw 1978] (RJO 10816d BRIT).
- Croton texensis* (Klotzsch) Muell.-Arg. var. *texensis* – TEXAS CROTON; Native; Annual; Sp/Su/F/W; WEST; T5 [Wh 1933, Bw 1978] (KNT 2662 BRIT).
- [^]*Euphorbia angusta* Engelm. – BLACKFOOT SPURGE; Native; Perennial; Sp/Su/F; INT; G5 (RJO 7352 BRIT).
- Euphorbia brachycera* Engelm. – HORNED EUPHORBIA; Native; Perennial; Sp/Su/F/W; D-WEST; G5 (RJO 7973a BRIT).
- Euphorbia cordifolia* Ell. – HEARTLEAF SPURGE; Native; Annual; Sp/Su/F; EAST; G5 (KNT 2726b BRIT).
- Euphorbia cyathophora* Murr. – WILD POINSETTIA; Native; Annual/Perennial; Sp/Su/F/W; INT; G5 (RJO 7386p BRIT).
- Euphorbia dentata* Michx. var. *dentata* – TOOTHED SPURGE; Native; Annual; Sp/Su/F/W; INT; T5 [Wh 1933, Bw 1978] (KNT 2676 BRIT).
- Euphorbia fendleri* Torr. & A. Gray – FENDLER SPURGE; Native; Perennial; Sp/Su/F; WEST; G5 [Wh 1933] (Whitehouse s.n.[00035726] TEX).
- Euphorbia lata* Engelm. – HOARY SPURGE; Native; Perennial; Sp/Su/F; WEST; G5 (RJO 8894 BRIT).
- Euphorbia longicruris* Scheele – WEDGELEAF EUPHORBIA; Native; Annual; Sp/Su; INT; G4 (KNT 2542 BRIT).

- Euphorbia maculata* L. – SPOTTED SPURGE; Native; Annual; Sp/Su/F/W; INT; G5 [Wh 1933, Bw 1978, WW 1982] (KNT 2777 BRIT).
- Euphorbia marginata* Pursh – SNOW-ON-THE-MOUNTAIN; Native; Annual; Sp/Su/F; INT; G5 [Wh 1933, Bw 1978] (RJO 11769p BRIT).
- Euphorbia missurica* Raf. – MISSOURI SPURGE; Native; Annual; Sp/Su/F; INT; G5 (RJO 10137d BRIT).
- Euphorbia nutans* Lag. – EYEBANE; Native; Annual/Perennial; Sp/Su/F; INT; G5 [Wh 1933, Bw 1978, WW 1982] (KNT 2834 BRIT).
- Euphorbia prostrata* Ait. – PROSTRATE SPURGE; Native; Annual/Perennial; Sp/Su/F/W; INT; G5 (RJO 7353 BRIT).
- Euphorbia serpens* Kunth – MAT SPURGE; Native; Annual/Perennial; Sp/Su/F/W; INT; G5 (RJO 8959c BRIT).
- Euphorbia spathulata* Lam. – WARTY EUPHORBIA; Native; Annual; Sp/Su/F/W; INT; G5 [Wh 1933] (KNT 2530 BRIT).
- Euphorbia tetrapora* Engelm. – WEAK EUPHORBIA; Native; Annual; Sp; EAST; G4 (RJO 7305b BRIT).
- Tragia betonicifolia* Nutt. – BETONY NOSEBURN; Native; Perennial; Sp/Su/F; EAST; G5 (KNT 2663 BRIT).
- Tragia ramosa* Torr. – CATNIP NOSEBURN; Native; Perennial; Sp/Su/F; INT; G5 [Wh 1933, Bw 1978] (KNT 2448 BRIT).
- FABACEAE**
- Acaciella angustissima* (P. Mill.) Britt. & Rose var. *hirta* (Nutt.) Kartesz, comb. nov. ined. – FERN ACACIA; Native; Perennial; Sp/Su; INT; T4 (RJO 10664b BRIT).
- Acmispon americanus* (Nutt.) Rydb. var. *americanus* – AMERICAN DEERWEED; Native; Annual; Sp/Su/F/W; INT; T5 [Wh 1933] (KNT 2503 BRIT).
- Astragalus lindheimeri* Engelm. ex A. Gray – LINDHEIMER MILKVETCH-GRAPE SCENT; Native; Annual; Sp/Su; INT; G4 (RJO 10514 BRIT).
- Astragalus lotiflorus* Hook. – LOW MILKVETCH; Native; Perennial; Sp/Su; INT; G5 (RJO 10512a BRIT).
- Astragalus nuttallianus* DC. var. *austrinus* (Small) Barneby ex Shreve & Wiggins – SOUTHERN MILKVETCH; Native; Annual/Perennial; Sp/W; WEST; T5 [Bw 1978] (*Tharp & Rowell 17286* TEX).
- Astragalus nuttallianus* DC. var. *nuttallianus* – TURKEY-PEA; Native; Annual/Perennial; Sp; INT; GU/GNR/TU/TNR (KNT 2350 BRIT).
- Astragalus plattensis* Nutt. – PLATTE MILKVETCH-SWEET SCENT; Native; Perennial; Sp/Su; INT; G5 (RJO 10488b BRIT).
- [^]*Astragalus pleianthus* (Shinners) Isely – PLEIANTHUS MILKVETCH; Native; Annual; Sp; INT; G4 [Wh 1933] (RJO 892u BRIT).
- [^]*Astragalus wrightii* A. Gray – WRIGHT MILKVETCH; Native; Annual; Sp; INT; G4 S4 (RJO 11449 BRIT).
- Centrosema virginianum* (L.) Benth. – BUTTERFLY PEA; Native; Perennial; Sp/Su/F/W; EAST; G5 [Wh 1933, WW 1982] (KNT 2707 BRIT).
- Chamaecrista fasciculata* (Michx.) Greene var. *fasciculata* – PRAIRIE SENNA; Native; Annual; Sp/Su/F/W; INT; T4 (RJO 9268e BRIT).
- Clitoria mariana* L. – PIGEONWINGS; Native; Perennial; Sp/Su/F; EAST; G5 [Wh 1933] (RJO 11758d BRIT).
- Dalea aurea* Nutt. ex Pursh – GOLDEN DALEA; Native; Perennial; Sp/Su/F; WEST; G5 [Wh 1933] (RJO 10659b BRIT).
- Dalea enneandra* Nutt. – BIGTOP DALEA; Native; Perennial; Sp/Su/F; INT; G5 (RJO 11683e BRIT).
- Dalea multiflora* (Nutt.) Shinners – ROUNDHEAD DALEA; Native; Perennial; Sp/Su/F; INT; G5 (RJO 10736f BRIT).
- Dalea nana* Torr. ex A. Gray – DWARF DALEA; Native; Perennial; Sp/Su/F; INT; G5 [Wh 1933, Bw 1978] (RJO 11720 BRIT).
- [~]*Desmanthus acuminatus* Benth. – WILD TANTAN; Native; Perennial; Sp; EAST; G4 (KNT 2526 BRIT).
- Desmanthus illinoensis* (Michx.) MacM. ex B.L. Robins. & Fern. – ILLINOIS BUNDLEFLOWER; Native; Perennial; Sp/Su/F; INT; G5 [Wh 1933] (RJO 8065a BRIT).
- Desmanthus leptolobus* Torr. & A. Gray – PRAIRIE BUNDLEFLOWER; Native; Perennial; Sp/Su/F; INT; G4 (RJO 10682f BRIT).
- Desmanthus velutinus* Scheele – VELVET BUNDLEFLOWER; Native; Perennial; Sp; INT; G5 (KNT 2768 BRIT).
- Desmodium paniculatum* (L.) DC. – PANICLED TICKCLOVER; Native; Perennial; Sp/Su/F; EAST; G5 (RJO 10663a BRIT).
- Desmodium psilophyllum* Schlecht. – SINGLELEAF TICKCLOVER; Native; Perennial; Sp/Su/F; INT; G5 [Wh 1933, Bw 1978] (*Butterwick & Lamb 3275* TEX).
- Desmodium sessilifolium* (Torr.) Torr. & A. Gray – SESSILELEAF TICKCLOVER; Native; Perennial; Sp/Su/F; EAST; G5 [Wh 1933] (RJO 10733e BRIT).
- Eysenhardtia texana* Scheele – TEXAS KIDNEYWOOD; Native; Perennial; Sp/Su; INT; G5 [Wh 1933, Bw 1978, WW 1982] (KNT 2839 BRIT).
- [^]*Galactia canescens* Benth. – HOARY MILKPEA; Native; Perennial; Sp/Su; INT; G4 (RJO 9236d BRIT).
- [~]*Galactia marginalis* Benth. – MARGINED MILKPEA; Native; Perennial; Sp/Su/W; EAST; G4 (RJO 7962d BRIT).
- Galactia volubilis* (L.) Britt. var. *volubilis* – DOWNY MILKPEA; Native; Perennial; Sp/Su/F; EAST; G5 (RJO 11589d BRIT).
- [~]*Indigofera lindheimeriana* Scheele – LINDHEIMER INDIGO; Native; Annual/Perennial; Sp/Su/F/W; WEST; G4 (RJO 7380d BRIT).
- Indigofera miniata* Ortega – WESTERN SCARLET PEA; Native; Perennial; Sp/Su/F/W; INT; G5 [Wh 1933, Bw 1978] (RJO 10663e BRIT).
- Lathyrus hirsutus* L. – SINGLETARY PEA; Exotic; Annual/Perennial; Sp/Su/F/W; (RJO 10660e BRIT).
- Lespedeza stuevei* Nutt. – STEUVE LESPEDEZA; Native; Perennial; Sp/Su/F; EAST; G4 [Wh 1933, Bw 1978, WW 1982] (KNT 2711 BRIT).
- Lespedeza virginica* (L.) Britt. – SLENDER BUSH-CLOVER; Native; Perennial; Sp/Su/F; EAST; G5 [Wh 1933] (RJO 10983e BRIT).
- Lupinus texensis* Hook. – TEXAS BLUEBONNET; Native; Annual/Perennial; Sp/Su/F/W; INT; G5 [Bw 1978] (KNT 2371 BRIT).
- Medicago lupulina* L. – BLACK MEDICK; Exotic; Annual/Perennial; Sp/Su/F/W; (RJO 10730e BRIT).
- ⁺*Medicago minima* (L.) L. ex Bartalini – BURCLOVER; Exotic; Annual; Sp/Su/F; [Wh 1933, Bw 1978, WW 1982] (KNT 2340 BRIT).
- Medicago polymorpha* L. – COMMON MEDICK; Exotic; Annual/Perennial; Sp/Su/F/W; (RJO 7432 BRIT).
- Medicago sativa* L. ssp. *sativa* – ALFAFA; Exotic; Annual/Perennial; Sp/Su/F; (RJO 10821e BRIT).
- Melilotus indicus* (L.) All. – SOUR CLOVER; Exotic; Annual; Sp/Su/F; (RJO 7383d BRIT).
- ⁺*Melilotus officinalis* (L.) Lam. – WHITE SWEETCLOVER; Exotic; Annual/Biennial/Perennial; Sp/Su/F; [Bw 1978] (*Butterwick & Lamb 2950* TEX).
- Mimosa aculeaticarpa* Ortega var. *biuncifera* (Benth.) Barneby – TWOTHORN CATCLAW; Native; Perennial; Sp/Su; WEST; GU/GNR/TU/TNR [Bw 1978] (KNT 2753 BRIT).
- Mimosa nuttallii* (DC.) B.L. Turner – NUTTALL SENSITIVEBRIAR; Native; Perennial; Sp/Su/F; INT; G5 (KNT 2537 BRIT).
- Neptunia lutea* (Leavenworth) Benth. – YELLOW PUFF NEPTUNIA; Native; Perennial; Sp/Su/F; EAST; G5 (RJO 7971 BRIT).
- Pediomelum digitatum* (Nutt. ex Torr. & A. Gray) Isely – PALMILEAF SCURFPEA; Native; Perennial; Sp/Su; INT; G5 (RJO 9675p BRIT).
- Pediomelum rhombifolium* (Torr. & A. Gray) Rydb. – ROUNDLEAF SCURFPEA; Native; Perennial; Sp/Su/W; INT; G5 (RJO 7385d BRIT).
- Pediomelum tenuiflorum* (Pursh) A.N. Egan – SLIMFLOWER SCURFPEA; Native; Perennial; Sp/Su/F; INT; G5 (RJO 9671 BRIT).
- Prosopis glandulosa* Torr. var. *glandulosa* – HONEY MESQUITE; Native; Perennial; Sp; INT; GU/GNR/TU/TNR [Bw 1978] (KNT 2405 BRIT).
- [~]*Rhynchosia americana* (Houst. Ex P. Mill.) M.C. Metz – AMERICAN SNOUT-BEAN; Native; Perennial; Sp/Su/F/W; EAST; G4 (RJO 7981 BRIT).
- Rhynchosia senna* Gillies ex Hook. var. *texana* (Torr. & A. Gray) M.C. Johnston – TEXAS SNOUTBEAN; Native; Perennial; Sp/Su/F; WEST; T4 [Wh 1933, Bw 1978] (KNT 2677 BRIT).
- Securigera varia* (L.) Lassen – CROWN VETCH; Exotic; Perennial; Sp/Su/F/W; (RJO 11702 BRIT).

Senna lindheimeriana (Scheele) Irwin & Barneby – LINDHEIMER SENNA; Native; Perennial; Sp/Su/F; WEST; G4 [Wh 1933, Bw 1978, WW 1982] (KNT 1838 BRIT).

Sesbania drummondii (Rydb.) Cory – RATTLEBUSH; Native; Perennial; Sp/Su/F; EAST; G4 (RJO 8075 BRIT).

Sesbania herbacea (P. Mill.) McVaugh – COFFEEBEAN; Native; Annual/Perennial; Sp/Su/F/W; INT; G5 (RJO 8076 BRIT).

Sesbania vesicaria (Jacq.) Ell. – BAGPOD SESBANIA; Native; Annual; Sp/Su/F; EAST; G5 (RJO 8074 BRIT).

Strophostyles helvola (L.) Ell. – TRAILING WILDBEAN; Native; Annual; Sp/Su/F; EAST; G5 [Wh 1933, Bw 1978] (KNT 2708 BRIT).

Strophostyles leiosperma (Torr. & A. Gray) Piper – SLICKSEED WILDBEAN; Native; Annual; Sp/Su/F; INT; G5 (RJO 10664d BRIT).

Styphnolobium affine (Torr. & A. Gray) Walp. – EVE'S NECKLACE; Native; Perennial; Sp; INT; G4 [Wh 1933, Bw 1978] (RJO 7990c BRIT).

[^]*Tephrosia lindheimeri* A. Gray – LINDHEIMER TEPHROSIA; Native; Perennial; Sp/Su; INT; G4 (RJO 9684p BRIT).

Vicia ludoviciana Nutt. ssp. *ludoviciana* – LOUISIANA VETCH; Native; Annual; Sp/W; INT; GU/GNR/TU/TNR [Wh 1933] (*Whitehouse s.n.*[00383472] TEX).

Vicia sativa L. ssp. *sativa* – COMMON VETCH; Exotic; Annual; Sp/Su/F; (RJO 9047 BRIT).

Vicia villosa Roth ssp. *villosa* – HAIRY VETCH; Exotic; Annual/Biennial/Perennial; Sp/Su/F; (KNT 2367 BRIT).

Zornia bracteata Walt. ex J.F. Gmel. – BRACED ZORNIA; Native; Annual; Sp/Su/F/W; EAST; G5 [Wh 1933, Bw 1978, WW 1982] (RJO 8933 BRIT).

FAGACEAE

Quercus fusiformis Small – PLATEAU LIVE OAK; Native; Perennial; Sp; INT; G5 [Wh 1933, Bw 1978, WW 1982] (KNT 2538 BRIT).

[~]*Quercus laceyi* Small – LACEY OAK; Native; Perennial; Sp; INT; G4 (*Lemke 4138* SWT, TEX).

Quercus margarettae Ashe ex Small – SAND POST OAK; Native; Perennial; Sp; EAST; G5 [Bw 1978] (*Butterwick & Lamb 3090* TEX).

Quercus marilandica (L.) Muenchh. – BLACKJACK OAK; Native; Perennial; Sp; EAST; G5 [Wh 1933, Bw 1978, WW 1982] (KNT 2786 BRIT).

Quercus sinuata Walt. var. *breviloba* (Torr.) C.H. Muller – BASTARD OAK; Native; Perennial; Sp; INT; T4 [WW 1982] (#).

Quercus stellata Wangenh. – POST OAK; Native; Perennial; Sp; EAST; G5 [Wh 1933, Bw 1978] (KNT 2443 BRIT).

FUMARIACEAE

[^]*Corydalis curvisiliqua* Engelm. ssp. *curvisiliqua* – CURVEPOD FUMEWORT; Native; Annual/Biennial; Sp/W; INT; T4 (KNT 3002 BRIT).

Corydalis micrantha (Engelm. ex A. Gray) A. Gray ssp. *australis* (Chapm.) G.B. Ownbey – SOUTHERN CORYDALIS; Native; Annual; Sp/W; EAST; T5 [WW 1982] (KNT 2392 BRIT).

GENTIANACEAE

Centaurium pulchellum (Sw.) Hayek ex Hand.-Maz. et al. – BRANCHED CENTAURY; Exotic; Annual; Su/F; (RJO 10657e BRIT).

Sabatia campestris Nutt. – PRAIRIE SABATIA; Native; Annual; Sp/Su/F; EAST; G5 [Wh 1933, Bw 1978, WW 1982] (KNT 2849 BRIT).

[~]*Sabatia formosa* Buckl. – PLATEAU SABATIA; Native; Annual; Sp; INT; GU/GNR/TU/TNR [Wh 1933] (*Tharp s.n.* BRIT).

GERANIACEAE

Erodium cicutarium (L.) L'Hér. ex Ait. – CRANESBILL; Exotic; Annual/Biennial; Sp/Su/F/W; (KNT 2356 BRIT).

Erodium texanum A. Gray – STORKSBILL; Native; Annual/Biennial; Sp/W; WEST; G5 (RJO 8897c BRIT).

Geranium carolinianum L. – CAROLINA GERANIUM; Native; Annual/Biennial; Sp/Su/F/W; INT; G5 (KNT 2533 BRIT).

Geranium dissectum L. – CUTLEAF GERANIUM; Exotic; Annual/Biennial; Sp/Su/F; (RJO 11394f BRIT).

Geranium texanum (Trel.) Heller – TEXAS GERANIUM; Native; Annual; Sp/W; INT; G4 (RJO 7296 BRIT).

HYPERICACEAE

Hypericum drummondii (Grev. & Hook.) Torr. & A. Gray – DRUMMOND ST. JOHNS'S-WORT; Native; Annual; Su/F; EAST; G5 [Wh 1933, Bw 1978, WW 1982] (KNT 2727 BRIT).

Hypericum gentianoides (L.) B.S.P. – PINWEED ST. JOHNS'S-WORT; Native; Annual; Sp/Su/F; EAST; G5 [Wh 1933, Bw 1978, WW 1982] (KNT 1837 BRIT).

Hypericum mutilum L. – DWARF ST. JOHNS'S-WORT; Native; Annual/Perennial; Sp/Su/F; EAST; G5 [Wh 1933, Bw 1978, WW 1982] (KNT 2482 BRIT).

JUGLANDACEAE

Carya illinoensis (Wangenh.) K. Koch – PECAN; Native; Perennial; Sp; EAST; G5 [Wh 1933, Bw 1978] (*Whitehouse s.n.*[00376973] TEX).

Carya texana Buckl. – BLACK HICKORY; Native; perennial; Sp; EAST; G4 [Wh 1933, Bw 1978, WW 1982] (KNT 2787 BRIT).

Juglans nigra L. – BLACK WALNUT; Native; Perennial; Sp/Su; EAST; G5 (KNT 2521 BRIT).

KRAMERIACEAE

Krameria lanceolata Torr. – TRAILING RATANY; Native; Perennial; Sp/Su/F; INT; G5 (KNT 2409 BRIT).

LAMIACEAE

[^]*Brazoria enquistii* M.W. Turner – ENQUIST'S BRAZOS-MINT; Native; Annual; Sp; INT; G2 S2 (RJO 12064 BRIT).

Callicarpa americana L. – AMERICAN BEAUTYBERRY; Native; Perennial; Sp/Su/F/W; EAST; G5 (RJO 9809e BRIT).

*Hedeoma acinoide*s Scheele – SLENDER MOCK PENNYROYAL; Native; Annual; Sp; INT; GU/GNR/TU/TNR [Wh 1933] (KNT 2422 BRIT).

Hedeoma drummondii Benth. – DRUMMOND MOCK PENNYROYAL PEP; Native; Annual/Biennial/Perennial; Sp/Su/F; WEST; G5 (RJO 7410p BRIT).

Hedeoma reverchonii (A. Gray) A. Gray var. *reverchonii* – REVERCHON MOCK PENNYROYAL LEM; Native; Perennial; Sp/Su; INT; GU/GNR/TU/TNR (KNT 2828 BRIT).

Hedeoma reverchonii (A. Gray) A. Gray var. *serpyllifolia* (Small) Irving – ROCK MOCK PENNYROYAL CAMPHOR; Native; Perennial; Sp/Su; INT; GU/GNR/TU/TNR [Wh 1933, Bw 1978, WW 1982] (KNT 2393 BRIT).

Lamium amplexicaule L. – HENBIT DEADNETTLE; Exotic; Annual/Biennial; Sp/Su/F/W; (RJO 7251 BRIT).

⁺*Marrubium vulgare* L. – HOREHOUND; Exotic; Perennial; Sp/Su/F/W; [Bw 1978, WW 1982] (KNT 2347 BRIT).

Mentha xpiperita L. (pro sp.) – PEPPERMINT; Exotic; Perennial; Sp/Su/F; (RJO 11757p BRIT).

Mentha spicata L. – SPEARMINT; Exotic; Perennial; Sp/Su/F; [Wh 1933, Bw 1978] (*Whitehouse s.n.*[00022084] TEX).

Monarda citriodora Cerv. ex Lag. ssp. *citriodora* – LEMON BEEBALM; Native; Annual/Biennial; Sp/Su/F; INT; T5 [Wh 1933] (*Whitehouse s.n.*[00369011] TEX).

Monarda clinopodioides A. Gray – BASIL BEEBALM; Native; Annual; Sp/Su; INT; G4 [Wh 1933, Bw 1978] (RJO 9070d BRIT).

Monarda punctata L. ssp. *punctata* var. *intermedia* (McClintock & Epling) Waterfall – DOTTED BEEBALM; Native; Annual/Biennial/Perennial; Sp/Su/F; EAST; T4 [Wh 1933] (*Tharp & Whitehouse s.n.*[00369165] TEX).

Nepeta cataria L. – CATNIP; Exotic; Perennial; Sp/Su/F; (RJO 8073b BRIT).

Salvia azurea Michx. ex Lam. – AZURE SAGE; Native; Perennial; Sp/Su/F; EAST; G4 (RJO s.n. BRIT).

Salvia coccinea P.J. Buchoz ex Etlinger – TROPICAL SAGE; Native; Annual/Perennial; Sp/Su/F/W; EAST; G5 (KNT 2718 BRIT).

Salvia texana (Scheele) Torr. – TEXAS SAGE; Native; Perennial; Sp/Su/F/W; INT; G5 (RJO 10527 BRIT).

Scutellaria drummondii Benth. var. *edwardsiana* B.L. Turner – DRUMMOND SKULLCAP; Native; Annual; Sp/Su/W; INT; GU/GNR/TU/TNR [Wh 1933, Bw 1978, WW 1982] (KNT 2420 BRIT).

~*Scutellaria microphylla* Moc. & Sessé ex Benth. – LITTLELEAF SKULLCAP; Native; Annual/Perennial; Sp/Su/W; INT; G4 (KNT 2824 BRIT).

Scutellaria ovata Hill ssp. *mexicana* Epling – Native; Perennial; Sp/Su; INT; T4 (RJO 11758c).

Scutellaria ovata Hill ssp. *ovata* – OVATELEAF SKULLCAP; Native; Perennial; Sp/Su; EAST; T5 [Wh 1933, Bw 1978, WW 1982] (KNT 2458 BRIT).

Scutellaria wrightii A. Gray – RESIN-DOT SKULLCAP; Native; Perennial; Sp/Su/W; INT; GU/GNR/TU/TNR (RJO 10641b BRIT).

Sideritis lanata L. – HAIRY IRONWORT; Exotic; Annual; Sp; (KNT 3011 BRIT).

Teucrium canadense L. var. *canadense* – WOOD SAGE; Native; Perennial; Sp/Su/F/W; EAST; T5 [Wh 1933] (KNT 2685 BRIT).

Teucrium laciniatum Torr. – CUTLEAF GERMANDER; Native; Perennial; Sp/Su; WEST; G4 (RJO 7354 BRIT).

**Vitex agnus-castus* L. var. *agnus-castus* – COMMON CHASTE TREE; Exotic; Perennial; Sp/Su/F; [Bw 1978] (*Butterwick & Lamb 2890* TEX).

Warnockia scutellarioides (Engelm. & A. Gray) M.W. Turner – PRAIRIE BRAZORIA; Native; Annual; Sp/W; INT; G4 (RJO 10648c BRIT).

LENTIBULARIACEAE

Utricularia cornuta Michx. – HORNED BLADDERWORT; Native; Annual/Perennial; Sp/Su/F; EAST; G5 [Wh 1933, Bw 1978] (RJO 10643d BRIT).

LINACEAE

Linum hudsonioides Planch. – TEXAS FLAX; Native; Annual; Sp/Su/W; INT; G4 [Wh 1933, Bw 1978, WW 1982] (KNT 2724 BRIT).

Linum imbricatum (Raf.) Shinners – TUFTED FLAX; Native; Annual; Sp/Su/W; EAST; G4 [Wh 1933] (KNT 2523 BRIT).

LINDERNIACEAE

Lindernia dubia (L.) Pennell var. *anagallidea* (Michx.) Cooperrider – CLASPING FALSE PIMPERNEL; Native; Annual/Biennial; Sp/Su/F; INT; T4 [Bw 1978] (KNT 2850 BRIT).

LOASACEAE

Mentzelia nuda (Pursh) Torr. & A. Gray var. *nuda* – BRACKETLESS MENTZELIA; Native; Biennial/Perennial; Sp/Su/F; WEST; GU/GNR/TU/TNR (RJO 9670e BRIT).

Mentzelia oligosperma Nutt. ex Sims – STICKLEAF MENTZELIA; Native; Perennial; Sp/Su; INT; G4 [Wh 1933, Bw 1978, WW 1982] (KNT 2473 BRIT).

LYTHRACEAE

Ammannia auriculata Willd. – EARLEAF AMMANNIA; Native; Annual; Sp/Su/F; INT; G5 (RJO 10862d BRIT).

Ammannia coccinea Rottb. – PURPLE AMMANNIA; Native; Annual; Sp/Su/F; INT; G5 (RJO 10862a BRIT).

Lythrum alatum Pursh var. *lancoelatum* (Eli.) Torr. & A. Gray ex Rothrock – LANCELEAF LOOSESTRIFE; Native; Perennial; Sp/Su/F; EAST; T5 (RJO 7978 BRIT).

Rotala ramosior (L.) Koehne – TOOTHCUP; Native; Annual; Sp/Su/F; INT; G5 (KNT 2898 BRIT).

MALVACEAE

Abutilon fruticosum Guill. & Perrottet – PELOTAZO; Native; Perennial; Su/F; INT; G4 [Wh 1933, Bw 1978, WW 1982] (KNT 2496 BRIT).

Abutilon wrightii A. Gray – WRIGHT ABUTILON; Native; Perennial; Sp/Su/F/W; WEST; G4 (RJO 8068e BRIT).

Callirhoe involucrata (Torr. & A. Gray) A. Gray var. *involucrata* – LOW WINECUP; Native; Perennial; Sp/Su/F/W; INT; T5 [Bw 1978] (KNT 2361 BRIT).

Callirhoe involucrata (Torr. & A. Gray) A. Gray var. *lineariloba* (Torr. & A. Gray) A. Gray – SLIMLOBE WINECUP; Native; Perennial; Sp/Su/F/W; INT; GU/GNR/TU/TNR (RJO 11394c BRIT).

~*Hermannia texana* A. Gray – TEXAS HERMANNIA; Native; Perennial; Sp/Su/F; INT; G5 (KNT 2717 BRIT).

Hibiscus laevis All. – HALBREDFEAF HIBISCUS; Native; Perennial; Sp/Su/F; EAST; G5 (RJO 11733e BRIT).

Modiola caroliniana (L.) G. Don – CAROLINA MODIOLA; Native; Annual/Biennial/Perennial; Sp/Su/F/W; EAST; G5 (RJO 11395c BRIT).

Rhynchosida physocalyx (A. Gray) Fryxell – SPEARLEAF SIDA; Native; Perennial; Sp/Su/F/W; WEST; G4 [Bw 1978] (KNT 2720 BRIT).

Sida abutifolia Mill. – SPREADING SIDA; Native; Annual/Perennial; Sp/Su/F/W; INT; G4 [Wh 1933, Bw 1978] (KNT 2675 BRIT).

Sida lindheimeri Engelm. & A. Gray – SHOWY SIDA; Native; Perennial; Sp/Su/F; EAST; G4 [Bw 1978] (KNT 2825 BRIT).

~*Sida longipes* A. Gray – STOCKFLOWER FANPETALS; Native; Perennial; Sp/Su; D-WEST; G4 [Wh 1982] (#).

Sphaeralcea angustifolia (Cav.) G. Don – NARROWLEAF GLOBE MALLOW; Native; Perennial; Sp/Su/F/W; WEST; G5 (RJO 9141a BRIT).

MENISPERMACEAE

Cocculus carolinus (L.) DC. – MOONSEED; Native; Perennial; Su/F; EAST; G5 [Wh 1933, Bw 1978, WW 1982] (KNT 2680 BRIT).

MOLLUGINACEAE

Glinus lotoides L. – LOTUS CARPETWEED; Exotic; Annual; Sp/Su/F; (*Carr & McNeal 10084* TEX).

Glinus radiatus (Ruiz & Pavón) Rohrb. – RADIATE CARPETWEED SPREADING SWEETJUICE; Exotic; Annual; Sp/Su/F; G5 (RJO 10913 BRIT).

Mollugo verticillata L. – GREEN CARPETWEED; Native; Annual; Sp/Su/F/W; INT; GU/GNR/TU/TNR [Wh 1933, Bw 1978, WW 1982] (RJO 6977b BRIT).

MONTIACEAE

Pheperanthus parviflorus (Nutt.) Kiger – CERISE DWARF FLAMEFLOWER; Native; Perennial; Sp/Su; INT; G5 [Wh 1933, Bw 1978, WW 1982] (KNT 2414 BRIT).

MORACEAE

Fatoua villosa (Thunb.) Nakai – FATOUA; Exotic; Annual; F; (RJO 7973 BRIT).

Morus rubra L. – RED MULBERRY; Native; Perennial; Sp/Su/W; EAST; G5 [Bw 1978] (*Correll & Little 27183* TEX).

NYCTAGINACEAE

Boerhavia coccinea P. Mill. – SPREADING SPIDERLING; Native; Perennial; Sp/Su/F; WEST; G5 [Wh 1933, Bw 1978] (KNT 2673 BRIT).

Boerhavia erecta L. – ERECT SPIDERLING; Native; Annual/Perennial; Sp/Su/F; INT; G5 (RJO 11759e BRIT).

Boerhavia linearifolia A. Gray – NARROWLEAF SPIDERLING; Native; Perennial; Sp/Su; WEST; G4 (RJO 7294 BRIT).

Mirabilis albida (Walt.) Heimerl – WHITE FOUR O'CLOCK; Native; Perennial; Sp/Su/F; INT; G5 [Wh 1933, Bw 1978, WW 1982] (RJO 10982 BRIT).

^*Mirabilis latifolia* (A. Gray) G. Diggs, B. Lipscomb & R. O'Kennon – WIDELEAF FOUR-O'CLOCK; Native; Perennial; F; INT; GU/GNR/TU/TNR (KNT 2779 BRIT).

Mirabilis linearis (Pursh) Heimerl var. *linearis* – NARROW-LEAF FOUR-O'CLOCK; Native; Perennial; Sp/Su/F; WEST; G5 [Bw 1978] (KNT 2810 BRIT).

OLEACEAE

Forestiera pubescens Nutt. – HAIRY ELBOWBUSH; Native; Perennial; Sp/W; WEST; G4 [Wh 1933, Bw 1978] (*Whitehouse.s.n.[00381074]* TEX).

Fraxinus albicans Buckl. – TEXAS ASH; Native; Perennial; W; INT; G5 (KNT 2921 BRIT).

~*Menodora heterophylla* Moric. Ex DC. – LOW MENODORA; Native; Perennial; Sp/Su/F/W; INT; G5 (RJO 7297 BRIT).

Menodora longiflora A. Gray – SHOWY MENODORA; Native; Perennial; Sp/Su; WEST; G4 (RJO 8062 BRIT).

ONAGRACEAE

- Ludwigia glandulosa* Walt. ssp. *glandulosa* – TORREY SEEDBOX; Native; Perennial; Sp/Su/F; EAST; T5 (KNT 2748 BRIT).
- Ludwigia palustris* (L.) Ell. – MARSH LUDWIGIA; Native; Perennial; Sp/Su/F; INT; G5 [Wh 1933, Bw 1978, WW 1982] (RJO 8086 BRIT).
- Ludwigia peploides* (Kunth) Raven ssp. *peploides* – SMOOTH LUDWIGIA; Native; Perennial; Sp/Su; INT; GU/GNR/TU/TNR (KNT 2508 BRIT).
- Ludwigia repens* J.R. Forst. – CREEPING LUDWIGIA; Native; Perennial; Sp/Su/F/W; INT; G5 (RJO 8055 BRIT).
- Oenothera berlandieri* (Spach) Steud. ssp. *berlandieri* – HALFSHRUB SUNDROPS; Native; Perennial; Sp/Su/F/W; INT; T4 (RJO 7409a BRIT).
- Oenothera berlandieri* (Spach) Steud. ssp. *pinifolia* (Engelm. ex A. Gray) W.L. Wagner & Hoch – BLACKTHROAT SUNDROPS; Native; Perennial; Sp/Su/W; INT; T4 [Wh 1933, Bw 1978] (*Tharp s.n.*[00403426] TEX).
- Oenothera curtiflora* W.L. Wagner & Hoch – VELVETWEED; Native; Annual; Sp/Su/F/W; INT; G5 (KNT 2683 BRIT).
- Oenothera grandis* (Britt.) Smyth – LARGE-FLOWERED EVENING PRIMROSE; Native; Annual; Sp/Su/F/W; INT; G5 [WW 1982] (RJO 6866 BRIT).
- Oenothera hartwegii* Benth. ssp. *pubescens* (A. Gray) W.L. Wagner & Hoch – GRAND PRAIRIE SUNDROPS; Native; Perennial; Sp/Su; WEST; T4 (KNT 2831 BRIT).
- Oenothera howardii* (A. Nels.) W.L. Wagner – SHORTPOD EVENING PRIMROSE; Native; Perennial; Sp/Su/W; WEST; G3 (KNT 2535 BRIT).
- Oenothera laciniata* Hill – CUTLEAF EVENING PRIMROSE; Native; Annual/Perennial; Sp/Su/F/W; INT; G5 (KNT 2656 BRIT).
- Oenothera patriciae* W.L. Wagner & Hoch – PLAINS EVENING-PRIMROSE; Native; Annual; Sp/W; INT; G4 (KNT 2821 BRIT).
- Oenothera rhombipetala* Nutt. ex Torr. & A. Gray – MOUNTAIN EVENING PRIMROSE; Native; Annual/Biennial; Sp/Su/F; INT; G4 (RJO 10635d BRIT).
- Oenothera sinuosa* W.L. Wagem & Hoch – WAVYLEAF GAURA; Native; Perennial; Sp/Su/F/W; INT; G4 (RJO 10502e BRIT).

OROBANCHACEAE

- Castilleja indivisa* Engelm. – TEXAS PAINTBRUSH; Native; Annual; Sp/W; INT; G5 (KNT 2504 BRIT).
- [^]*Castilleja purpurea* (Nutt.) G. Don var. *lindheimeri* (A. Gray) Shimmers – ORANGE PAINTBRUSH; Native; Perennial; Sp/W; T3 S3 (RJO 8883k BRIT).

OXALIDACEAE

- Oxalis dillenii* Jacq. – DILLEN'S OXALIS; Native; Perennial; Sp/Su/F/W; INT; G5 [Bw 1978, WW 1982] (KNT 2349 BRIT).
- Oxalis drummondii* A. Gray – DRUMMOND'S OXALIS; Native; Perennial; Sp/Su; INT; G5 (RJO 8102 BRIT).
- Oxalis stricta* L. – UPRIGHT YELLOW WOOD-SORREL; Native; Perennial; Sp/Su/F; EAST; G5 [Wh 1933] (KNT 2390 BRIT).

PAPAVERACEAE

- Argemone albiflora* Hornem. ssp. *texana* G.B. Ownbey – WHITE PRICKLYPOPPY; Native; Annual/Biennial/Perennial; Sp/Su/F/W; INT; GU/GNR/TU/TNR [Bw 1978, WW 1982] (KNT 2668 BRIT).
- Argemone polyanthemus* (Fedde) G.B. Ownbey – MANY FLOWERED PRICKLYPOPPY; Native; Annual/Biennial/Perennial; Sp/Su/F; WEST; G4 (KNT 2480 BRIT).

PARNASSIACEAE

- Lepuropetalon spatulatum* Ell. – PETITEPLANT; Native; Annual/Perennial; W; EAST; G4 [Wh 1933, WW 1982] (RJO 8552e BRIT).

PASSIFLORACEAE

- Passiflora affinis* Engelm. – BRACED PASSIONFLOWER; Native; Perennial; Sp/Su; INT; G5 [Wh 1933, Bw 1978] (KNT 2794 BRIT).
- Passiflora lutea* L. – YELLOW PASSIONFLOWER; Native; Perennial; Sp/Su/F; EAST; G5 (RJO 9813 BRIT).

- Passiflora tenuiloba* Engelm. – SPREADLOBE PASSIONFLOWER; Native; Perennial; Sp/Su/F; INT; G5 (RJO 10505e BRIT).

PETIVERIACEAE

- Rivina humilis* L. – PIGEONBERRY; Native; Perennial; Sp/Su/F/W; INT; G5 [WW 1982] (KNT 2805 BRIT).

PHRYMACEAE

- Mazus pumilus* (Burm. f.) Steenis – DWARF MAZUS; Exotic; Annual; Sp/Su/F/W; (RJO 10501e BRIT).
- Mimulus glabratus* Kunth – ROUNDLEAF MONKEYFLOWER; Native; Perennial; Sp/Su/F/W; INT; G5 [Bw 1978, WW 1982] (KNT 2751B BRIT).

PHYLLANTHACEAE

- Phyllanthus abnormis* Baill. var. *abnormis* – DRUMMOND LEAFFLOWER; Native; Annual; Sp/Su/F/W; INT; GU/GNR/TU/TNR [Wh 1933, Bw 1978] (KNT 2411 BRIT).
- Phyllanthus carolinensis* Walt. ssp. *carolinensis* – CAROLINA LEAF-FLOWER; Native; Annual; Sp/Su/F; EAST; T5 (KNT 3000 BRIT).
- Phyllanthus polygonoides* Nutt. ex Spreng. – KNOTWEED LEAFFLOWER; Native; Perennial; Sp/Su/F/W; INT; G5 [Wh 1933, Bw 1978, WW 1982] (KNT 2726 BRIT).

PHYTOLACCACEAE

- Phytolacca americana* L. var. *americana* – POKEBERRY; Native; Perennial; Sp/Su/F; EAST; T5 [Wh 1933, Bw 1978, WW 1982] (KNT 2679 BRIT).

PLANTAGINACEAE

- Bacopa monnieri* (L.) Pennell – COASTAL WATER HYSSOP; Native; Perennial; Sp/Su/F/W; EAST; G5 [Wh 1933, Bw 1978] (*Whitehouse s.n.*[00335165] TEX).
- Bacopa rotundifolia* (Michx.) Wettst. – DISC WATER HYSSOP; Native; Perennial; Sp/Su/F; INT; G5 [Bw 1978] (RJO 9670e BRIT).
- Bellardia trixago* (L.) All. – BELLARDIA; Exotic; Annual; Sp; (RJO 11397e BRIT).
- Callitriche heterophylla* Pursh ssp. *heterophylla* – LARGER WATER STARWORT; Native; Annual/Perennial; Sp/Su/F/W; INT; T5 [Wh 1933] (RJO 8334 BRIT).
- Callitriche peploides* Nutt. – MAT WATER STARWORT; Native; Annual; Sp/Su/W; EAST; G4 [WW 1982] (#).
- Leucospora multifida* (Michx.) Nutt. – NARROWLEAF CONOBEA; Native; Annual; Sp/Su/F; EAST; G5 [Wh 1933] (RJO 10814e BRIT).
- ⁺*Linaria vulgaris* P. Mill. – COMMON TOADFLAX; Exotic; Perennial; Sp/Su/F/W; (RJO 7966e BRIT).
- Maurandella antirrhiniflora* (Humb. & Bonpl. ex Willd.) Rothm. – SNAPDRAGON VINE; Native; Perennial; Sp/Su/F/W; WEST; G4 [Bw 1978] (RJO 10641e BRIT).
- Mecardonia acuminata* (Walt.) Small var. *acuminata* – PURPLE MONKEYFLOWER; Native; Perennial; Sp/Su/F; EAST; T5 (RJO 1197 BRIT).
- Mecardonia procumbens* (P. Mill.) Small – PROSTRATE MECARDONIA; Native; Annual/Perennial; Sp/Su/F/W; INT; G5 (KNT 2374 BRIT).
- Nuttallanthus canadensis* (L.) D.A. Sutton – CANADIAN TOADFLAX; Native; Annual/Biennial; Sp/Su/F/W; EAST; G5 (KNT 2416 BRIT).
- Nuttallanthus texanus* (Scheele) D.A. Sutton – TEXAS TOADFLAX; Native; Annual/Biennial; Sp/W; INT; G4 [Bw 1978, WW 1982] (#).
- [^]*Penstemon guadalupensis* Heller – GUADALUPE PENSTEMON; Native; Perennial; Sp/W; INT; G3 S3 (RJO 9073e BRIT).
- Plantago heterophylla* Nutt. – SIMPLESPIKE PLANTAIN; Native; Annual; Sp/Su; EAST; G5 (RJO 8486 BRIT).
- Plantago lanceolata* L. – ENGLISH PLANTAIN; Exotic; Annual/Biennial/Perennial; Sp/Su/F; (RJO 11679 BRIT).
- Plantago ovata* Forsk. – BLOND PLANTAIN; Native; Annual; Sp/F/W; D-WEST; G4 (KNT 2524 BRIT).
- Plantago patagonica* Jacq. – BRISTLEBRACT PLANTAIN; Native; Annual; Sp/Su/W; WEST; G5 [Wh 1933] (*Whitehouse & B.C.T. s.n.*[00041623] TEX).

- Plantago rhodosperma* Dcne. – REDSEED PLANTAIN; Native; Annual; Sp/Su/W; INT; GU/GNR/TU/TNR (KNT 2398 BRIT).
- Plantago virginica* L. – PALESEED PLANTAIN; Native; Annual/Biennial; Sp/Su/W; EAST; G5 [Wh 1933] (Barkley & Tharp 47529 TEX).
- Plantago wrightiana* Dcne. – WRIGHT PLANTAIN; Native; Annual; Sp/Su; INT; G5 [Wh 1933, Bw 1978, WW 1982] (KNT 2817 BRIT).
- Veronica americana* Schwein. ex Benth. – AMERICAN BROOKLIME; Native; Perennial; Sp/Su; INT; G5 (RJO 9705e BRIT).
- Veronica anagallis-aquatica* L. – WATER SPEEDWELL; Exotic; Biennial/Perennial; Sp/Su/F/W; (KNT 2429 BRIT).
- Veronica peregrina* L. ssp. *peregrina* – PURSLANE SPEEDWELL; Native; Annual; Sp/Su/F/W; EAST; T5 [Wh 1933, Bw 1978, WW 1982] (RJO 7380e BRIT).
- Veronica peregrina* L. ssp. *xalapensis* (Kunth) Pennell – XALAPA SPEEDWELL; Native; Annual; Sp/Su/W; INT; T5 (KNT 2383 BRIT).
- POLEMONIACEAE**
- Giliastrum incisum* (Benth.) J.M. Porter – CUTLEAF GILIA; Native; Annual/Biennial/Perennial; Sp; INT; G4 [Bw 1978] (KNT 2447 BRIT).
- Giliastrum rigidulum* (Benth.) Rydb. – RIGID GILIA BLUEBOWLS; Native; Annual/Perennial; Sp/Su/F; INT; G5 [WW 1982] (#).
- Ipomopsis rubra* (L.) Wherry – STANDING CYPRESS; Native; Biennial; Sp/Su/F; EAST; G4 (collector unknown s.n.[00398159] TEX).
- Phlox drummondii* Hook. ssp. *drummondii* – DRUMMOND PHLOX; Native; Annual; Sp/Su/F; EAST; T5 [Wh 1933] (KNT 2665 BRIT).
- Phlox drummondii* Hook. ssp. *mcallisteri* (Whitehouse) Wherry – McALLISTER PHLOX; Native; Annual; Sp/Su/F; INT; GU/GNR/TU/TNR [Wh 1933, Bw 1978] (KNT 2438 BRIT).
- Phlox pilosa* L. ssp. *riparia* Wherry – STREAMSIDE PHLOX; Native; Perennial; Sp/Su/F/W; INT; T4 [WW 1982] (#).
- POLYGALACEAE**
- Polygala alba* Nutt. – WHITE MILKWORT; Native; Perennial; Sp/Su/F/W; INT; G5 (RJO 7955 BRIT).
- POLYGONACEAE**
- Eriogonum annuum* Nutt. – ANNUAL WILD BUCKWHEAT; Native; Annual/Biennial; Sp/Su/F; INT; G5 [Wh 1933, Bw 1978] (KNT 2814 BRIT).
- Eriogonum jamesii* Benth. – JAMES WILD BUCKWHEAT; Native; Perennial; Su/F; D-WEST; G5 [WW 1982] (#).
- Eriogonum setaceum* Riddell – BUCKWHEAT; Native; Perennial; Su/F; INT; GU/GNR/TU/TNR [Wh 1933, Bw 1978] (Butterwick & Lamb 2993 TEX).
- [^]*Eriogonum tenellum* Torr. var. *ramosissimum* Benth. – TALL WILD BUCKWHEAT; Native; Perennial; Sp/Su; INT; T3 S3 [Wh 1933, Bw 1978, WW 1982] (KNT 1827 BRIT).
- Fallopia convolvulus* (L.) A. Löve – DULLSEED CORNBIND; Exotic; Annual; Sp/Su/F; (RJO 10714e BRIT).
- Persicaria hydropiperoides* (Michx.) Small – SWAMP SMARTWEED; Native; Perennial; Sp/Su/F; INT; G5 [Wh 1933] (KNT 2710 BRIT).
- Persicaria maculosa* S.F. Gray – SPOTTED LADY'S-THUMB; Exotic; Annual/Perennial; Sp/Su/F; (Tharp, Krodel & Barkley 17729 TEX).
- Persicaria punctata* (Eli.) Small – DOTTED SMARTWEED; Native; Annual/Perennial; Sp/Su/F/W; INT; G5 [Wh 1933, Bw 1978] (Butterwick & Lamb 3301 TEX).
- Polygonum aviculare* L. ssp. *aviculare* – PROSTRATE KNOTWEED; Exotic; Annual/Perennial; Sp/Su/F; (RJO 10819e BRIT).
- Rumex acetosella* L. – SHEEP SORREL; Exotic; Perennial; Sp/Su/F/W; (RJO 9669e BRIT).
- Rumex altissimus* Wood – PALE DOCK; Native; Perennial; Sp/Su; INT; G5 (RJO 10819 BRIT).
- Rumex crispus* L. – CURLY DOCK; Exotic; Perennial; Sp/Su/F/W; (KNT 2433 BRIT).
- Rumex hastatulus* Baldw. – HEARTWING DOCK; Native; Perennial; Sp/Su; INT; G5 [Wh 1933] (Whitehouse & Tharp s.n.[00294985] TEX).
- Rumex pulcher* L. – FIDDLE DOCK; Exotic; Perennial; Sp/Su/F; (RJO 7976 BRIT).
- PORTULACACEAE**
- Portulaca oleracea* L. – ROUGHSEED PURSLANE; Native; Annual; Sp/Su/F/W; INT; GU/GNR/TU/TNR [Bw 1978] (KNT 2816 BRIT).
- Portulaca pilosa* L. – SHAGGY PURSLANE; Native; Annual/Perennial; Sp/Su/F; INT; G5 [Wh 1933, Bw 1978, WW 1982] (KNT 2669 BRIT).
- Portulaca umbraticola* Kunth ssp. *umbraticola* – WINGPOD PURSLANE; Native; Annual; Sp/Su/F/W; INT; T5 [Wh 1933, Bw 1978] (KNT 2934 BRIT).
- PRIMULACEAE**
- Androsace occidentalis* Pursh – WESTERN ROCK JASMINE; Native; Annual; Sp/Su/W; INT; G5 (RJO 9047e BRIT).
- Lysimachia arvensis* (L.) U. Manns & A. Anderb. – SCARLET PIMPERNEL; Exotic; Annual/Biennial/Perennial; Sp/Su/F/W; (RJO 10503a BRIT).
- Lysimachia minima* (L.) U. Manns & A. Anderb. – CHAFFWEED; Native; Annual; Sp/Su/F/W; INT; G5 [Wh 1933, Bw 1978] (RJO 7384d BRIT).
- Samolus ebracteatus* Kunth – LIMEROCK BROOKWEED; Native; Perennial; Sp/Su/F/W; INT; G4 (RJO 8041a BRIT).
- Samolus parviflorus* Raf. – SMALLFLOWER BROOKWEED; Native; Perennial; Sp/Su/F/W; INT; G5 [Bw 1978, WW 1982] (Butterwick & Lamb 2988 TEX).
- RANUNCULACEAE**
- Anemone berlandieri* Pritz. – TEN-PETAL ANEMONE; Native; Annual; Sp/W; EAST; G4 [Wh 1933, Bw 1978] (RJO 10985a BRIT).
- Clematis drummondii* Torr. & A. Gray – TEXAS VIRGINSBOWER; Native; Perennial; Sp/Su/W; INT; G5 (RJO 8059a BRIT).
- Clematis pitcheri* Torr. & A. Gray var. *pitcheri* – PURPLE LEATHERFLOWER; Native; Perennial; Sp/Su; INT; GU/GNR/TU/TNR [Wh 1933, Bw 1978, WW 1982] (KNT 2696 BRIT).
- Clematis reticulata* Walt. – NETLEAF LEATHER FLOWER; Native; Perennial; Sp/Su; EAST; G4 [Bw 1978, WW 1982] (#).
- [^]*Clematis texensis* Buckl. – SCARLET CLEMATIS; Native; Perennial; Sp/Su/F/W; INT; G3 S3 [Bw 1978] (Butterwick & Lamb 2978 TEX).
- Delphinium carolinianum* Walt. ssp. *virescens* (Nutt.) R.E. Brooks – WHITE CAROLINA LARKSPUR; Native; Perennial; Sp/Su; INT; T5 [Wh 1933] (Tharp s.n.[00354250] TEX).
- Myosurus minimus* L. – MOUSETAIL; Native; Annual; Sp/Su/W; INT; G5 (RJO 10444 BRIT).
- Ranunculus fascicularis* Muhl. ex Bigelow – TUFTED BUTTERCUP; Native; Perennial; Sp/W; EAST; G5 (Gould, Brown, & Celerier 5498 BRIT).
- Ranunculus macrantherus* Scheele – SHOWY BUTTERCUP; Native; Perennial; Sp/Su/W; INT; G4 [Wh 1933, WW 1982] (KNT 2410 BRIT).
- Ranunculus muricatus* L. – ROUGHSEED BUTTERCUP; Exotic; Annual/Biennial/Perennial; Sp/Su/W; (RJO 10513a BRIT).
- Ranunculus parviflorus* L. – SMALLFLOWER BUTTERCUP; Exotic; Annual; Sp/Su/W; (RJO 10648a BRIT).
- Ranunculus pusillus* Poir. – WEAK BUTTERCUP; Native; Annual; Sp/Su/W; EAST; G5 [Wh 1933, Bw 1978] (KNT 2505 BRIT).
- RHAMNACEAE**
- Colubrina texensis* (Torr. & A. Gray) A. Gray – TEXAS SNAKEWEED; Native; Perennial; Sp; INT; G5 (RJO 9681a BRIT).
- Frangula caroliniana* (Walt.) A. Gray – CAROLINA FALSE BUCKTHORN; Native; Perennial; Sp; EAST; G5 (RJO 8208 BRIT).
- Ziziphus obtusifolia* (Hook. ex Torr. & A. Gray) A. Gray var. *obtusifolia* – LOTE BUSH; Native; Perennial; Sp/Su; INT; GU/GNR/TU/TNR [Bw 1978] (RJO 7346 BRIT).
- ROSACEAE**
- Crataegus crus-galli* L. – COCK SPUR HAWTHORN; Native; Perennial; Sp/Su/F; EAST; G5 (KNT 2713 BRIT).

Crataegus reverchonii Sarg. – REVERCHON'S HAWTHORN; Native; Perennial; Sp/Su/F; EAST; G4 (RJO 1088 UWO).

^*Crataegus tracyi* Ashe ex Egglest. – TRACY'S HAWTHORN; Native; Perennial; Sp; INT; G3 S3 (RJO 1091 UWO).

Malus ioensis (Wood) Britt. – TEXAS CRAB APPLE; Native; Perennial; Sp/Su; D-EAST; G4 [Allred 2013] (#).

Prunus mexicana S. Wats. – MEXICAN PLUM; Native; Perennial; Sp; EAST; G4 (#).

^*Prunus minutiflora* Engelm. – TEXAS ALMOND; Native; Perennial; Sp/W; INT; G3 S3 (RJO 10491 BRIT).

Prunus persica (L.) Batsch – PEACH; Exotic; Perennial; Sp; (KNT 2493 BRIT).

Prunus rivularis Scheele – CREEK PLUM; Native; Perennial; Sp; INT; G4 [Wh 1933] (*Whitehouse & Tharp* 44370 TEX).

^*Prunus texana* D. Dietr. – TEXAS PEACHBUSH; Native; Perennial; Sp/W; INT; G3 S3 [Bw 1978] (RJO 757 BRIT).

Rubus bifrons Vest ex Tratt. – HIMALAYAN BLACKBERRY; Exotic; Perennial; Sp; (RJO 10503f BRIT).

Rubus oklahomus Bailey – OKLAHOMA DEWBERRY; Native; Perennial; Sp; EAST; G4 (KNT 3008 BRIT).

Rubus trivialis Michx. – SOUTHERN DEWBERRY; Native; Perennial; Sp/Su/W; EAST; G5 [Bw 1978] (KNT 2492 BRIT).

RUBIACEAE

Cephalanthus occidentalis L. – BUTTONBUSH; Native; Perennial; Sp/Su/F/W; INT; G5 [Bw 1978] (KNT 2681 BRIT).

Diodia teres Walt. – ROUGH BUTTONWEED; Native; Annual/Perennial; Sp/Su/F; EAST; G5 [Wh 1933, Bw 1978, WW 1982] (KNT 2851 BRIT).

Galium aparine L. – CLEAVERS; Native; Annual; Sp/Su/W; INT; G5 [Bw 1978] (RJO 7432 BRIT).

Galium circaezans Michx. – WOODS BEDSTRAW; Native; Perennial; Sp/Su/F; EAST; G5 (RJO 10696e BRIT).

Galium proliferum A. Gray – SPREADING BEDSTRAW; Native; Annual; Sp/W; WEST; G5 [Bw 1978] (*Butterwick & Lamb* 2980 TEX).

Galium texense A. Gray – TEXAS BEDSTRAW; Native; Annual; Sp/Su/W; INT; G4 [Wh 1933, Bw 1978, WW 1982] (KNT 2841 BRIT).

Galium virgatum Nutt. – SOUTHWEST BEDSTRAW; Native; Annual; Sp/Su/W; INT; G4 [Wh 1933] (KNT 2385 BRIT).

Houstonia humifusa (A. Gray) A. Gray – MAT BLUEETS; Native; Annual; Sp/Su/F/W; INT; G5 (RJO 8932 BRIT).

Houstonia pusilla Schoeppf – TINY BLUEETS; Native; Annual; Sp/W; EAST; G5 [Wh 1933, Bw 1978, WW 1982] (RJO 8333 BRIT).

Oldenlandia boschii (DC.) Chapm. – BOSCH BLUEETS; Native; Perennial; Sp/Su/F; EAST; G5 (*Warnock* 20574 TEX).

Richardia trifocata (Torr. & A. Gray) Standl. – PRAIRIE BUTTONWEED; Native; Perennial; Sp/Su/F/W; INT; GU/GNR/TU/TNR [Bw 1978] (KNT 2712 BRIT).

Stenaria nigricans (Lam.) Terrell var. *nigricans* – PRAIRIE BLUEETS; Native; Perennial; Sp/Su/F/W; INT; T5 [Wh 1933, Bw 1978, WW 1982] (KNT 2483 BRIT).

RUTACEAE

Ptelea trifoliata L. ssp. *angustifolia* (Benth.) V. Bailey – PEACHLEAF HOPTREE; Native; Perennial; Sp/Su; INT; T4 [Wh 1933] (*Whitehouse s.n.*[00302608] TEX).

Ptelea trifoliata L. ssp. *trifoliata* – WOOLLY HOPTREE; Native; Perennial; Sp/Su; INT; T5 [Bw 1978] (KNT 2694 BRIT).

Thamnosma texana (A. Gray) Torr. – YELLOW TEXAS DUTCHMAN'S BREECHES; Native; Perennial; Sp/F/W; WEST; G5 (RJO 8385e BRIT).

Zanthoxylum hirsutum Buckl. – TEXAS HERCULES' CLUB; Native; Perennial; Sp; INT; G4 [WW 1982] (#).

SALICACEAE

Populus deltoides Bartr. ex Marsh. ssp. *deltoides* – EASTERN COTTONWOOD; Native; Perennial; Sp/Su/W; EAST; T5 [Wh 1933, Bw 1978] (*Whitehouse* 11414 BRIT).

Salix nigra Marsh. – BLACK WILLOW; Native; Perennial; Sp/Su; EAST; G5 [Bw 1978] (RJO 7385e BRIT).

SANTALACEAE

Phoradendron leucarpum (Raf.) Reveal & M.C. Johnston – MISTLETOE; Native; Perennial; Sp/Su/F/W; INT; G5 [Bw 1978, WW 1982] (KNT 2406 BRIT).

SAPINDACEAE

Aesculus glabra Willd. var. *arguta* (Buckl.) B.L. Robins. – TEXAS BUCKEY; Native; Perennial; Sp/W; INT; T4 [Wh 1933, WW 1982] (KNT 2404 BRIT).

^*Aesculus pavia* L. var. *flavescens* (Sarg.) Correll – PLATEAU YELLOW BUCKEY; Native; Perennial; Sp/Su/W; INT; T3 [WW 1982] (#).

Cardiospermum halicacabum L. – HEARTSEED BALLOONVINE; Native; Annual/Biennial/Perennial; Sp/Su/F/W; EAST; G5 (RJO 8067e BRIT).

Sapindus saponaria L. var. *drummondii* (Hook. & Arn.) L. Benson – WESTERN SOAPBERRY; Native; Perennial; Sp/Su/W; INT; T5 [WW 1982] (#).

Ungnadia speciosa Endl. – MEXICAN BUCKEY; Native; Perennial; Sp/W; INT; G4 [Wh 1933, Bw 1978, WW 1982] (KNT 2859 BRIT).

SAPOTACEAE

Sideroxylon lanuginosum Michx. ssp. *oblongifolium* (Nutt.) T.D. Pennington – WOOLY BUMELIA; Native; Perennial; Sp/Su; INT; GU/GNR/TU/TNR [Wh 1933, Bw 1978, WW 1982] (KNT 2450 BRIT).

SCROPHULARIACEAE

Buchnera floridana Gandog. – FLORIDA BLUEHEARTS; Native; Annual/Biennial/Perennial; Sp/Su/F; EAST; GU/GNR/TU/TNR (KNT 1831 BRIT).

+*Verbascum thapsus* L. – FLANNEL MULLEIN; Exotic; Biennial; Sp/Su/F/W; [Bw 1978, WW 1982] (KNT 2498 BRIT).

SOLANACEAE

Bouchetia erecta DC. – PAINTEDTONGUE; Native; Perennial; Sp/Su/F/W; INT; G4 (RJO 11394 BRIT).

Calibrachoa parviflora (Juss.) D'Arcy – MAT PETUNIA; Native; Annual; Sp/Su/F; INT; G5 [Bw 1978] (KNT 2388 BRIT).

Datura wrightii Regel – WRIGHT THORN APPLE; Native; Annual/Perennial; Sp/Su/F/W; WEST; G5 (KNT 2804 BRIT).

Nicotiana repanda Willd. ex Lehm. – FIDDLELEAF TOBACCO; Native; Annual; Sp/Su/W; INT; G4 (KNT 2671 BRIT).

Physalis angulata L. – CUTLEAF GROUNDCHERRY; Native; Annual; Sp/Su/F/W; INT; G5 (RJO 10710e BRIT).

Physalis cinerascens (Dunal) A.S. Hitchc. var. *cinerascens* – BEACH GROUNDCHERRY; Native; Perennial; Sp/Su/F/W; INT; T4 [Bw 1978, WW 1982] (KNT 2843 BRIT).

Physalis heterophylla Nees – CLAMMY GROUNDCHERRY; Native; Perennial; Sp/Su/F; INT; G5 (RJO 11917 BRIT).

Physalis virginiana P. Mill. var. *virginiana* – TEXAS GROUNDCHERRY; Native; Perennial; Sp/Su/F; EAST; T5 (KNT 2540 BRIT).

Quincula lobata (Torr.) Raf. – PURPLE GROUNDCHERRY; Native; Perennial; Sp/Su/F/W; WEST; G5 (RJO 7379e BRIT).

Solanum citrullifolium A. Braun var. *citrullifolium* – MELONLEAF NIGHTSHADE; Native; Annual; Sp/Su/F; D-WEST; GU/GNR/TU/TNR [WW 1982] (RJO 9079e BRIT).

Solanum dimidiatum Raf. – HORSENETTLE; Native; Perennial; Sp/Su/F; INT; G5 (KNT 2365 BRIT).

Solanum elaeagnifolium Cav. – SILVERLEAF NIGHTSHADE; Native; Perennial; Sp/Su/F/W; INT; G4 [Bw 1978] (KNT 2481 BRIT).

Solanum ptychanthum Dunal – BLACK NIGHTSHADE; Native; Annual; Sp/Su/F; INT; G5 [Bw 1978] (RJO 10699e BRIT).

Solanum rostratum Dunal – BUFFALOBUR; Native; Annual; Sp/Su/F; INT; G5 [Bw 1978] (RJO 11916 BRIT).

Solanum triquetrum Cav. – TEXAS NIGHTSHADE; Native; Perennial; Sp/Su/F/W; INT; G5 [Bw 1978] (KNT 2495 BRIT).

STERCULIACEAE

Melochia pyramidata L. – ANGLEPOD MELOCHIA; Native; Annual/Perennial; Sp/Su/F; INT; G5 (RJO 10810 BRIT).

STYRACACEAE

[^]*Styrax platanifolius* Engelm. ssp. *platanifolius* – SYCAMORELEAF SNOWBELLS; Native; Perennial; Sp; INT; T3 S3 [Wh 1933, WW 1982] (Whitehouse s.n.[00380876] TEX).

TALINACEAE

Talinum paniculatum (Jacq.) Gaertn. – PINK BABY’S BREATH; Native; Perennial; Sp/Su/F/W; INT; GU/GNR/TU/TNR (RJO 10813 BRIT).

TAMARICACEAE

⁺*Tamarix chinensis* Lour. – CHINESE TAMARISK; Exotic; Perennial; Sp/Su/F/W; (KNT 2432 BRIT).

TETRACHONDRAEAE

Polypremum procumbens L. – JUNIPERLEAF; Native; Annual/Perennial; Sp/Su/F; EAST; G5 [Wh 1933, Bw 1978, WW 1982] (KNT 2465 BRIT).

ULMACEAE

Ulmus americana L. – AMERICAN ELM; Native; Perennial; Sp/W; INT; G5 [Bw 1978] (RJO 7194 BRIT).

Ulmus crassifolia Nutt. – CEDAR ELM; Native; Perennial; Su/F; EAST; G5 [Wh 1933] (KNT 2927 BRIT).

URTICACEAE

Boehmeria cylindrica (L.) Sw. – SMALLSPIKE FALSENETTLE; Native; Perennial; Sp/Su/F; EAST; G5 (RJO 11678b BRIT).

Parietaria pensylvanica Muhl. ex Willd. – PENNSYLVANIA PELLITORY; Native; Annual; Sp/Su/F/W; INT; G5 [Bw 1978] (KNT 2391 BRIT).

Urtica chamaedryoides Pursh – HEARTLEAF NETTLE; Native; Annual; Sp/Su/F/W; EAST; G4 [Wh 1933, Bw 1978, WW 1982] (RJO 7410b BRIT).

VALERIANACEAE

[^]*Valerianella stenocarpa* (Engelm. ex A. Gray) Krok – NARROWFRUIT CORNSALAD; Native; Annual; Sp/W; INT; G3 (RJO 8884e BRIT).

[^]*Valerianella texana* Dyal – TEXAS CORNSALAD; Native; Annual; Sp; INT; G2 S2 (RJO 10498 BRIT).

VERBENACEAE

Aloysia gratissima (Gillies & Hook.) Troncoso var. *gratissima* – BEEBUSH; Native; Perennial; Sp/Su/F/W; INT; T5 [Wh 1933, Bw 1978] (KNT 2487 BRIT).

Glandularia bipinnatifida (Nutt.) Nutt. – PRAIRIE VERBENA; Native; Annual/Perennial; Sp/Su/F/W; INT; G5 [Bw 1978] (Tharp s.n.[00021506] TEX).

Glandularia pumila (Rydb.) Umer – PINK VERBENA; Native; Annual; Sp/Su/W; INT; G5 [Wh 1933, Bw 1978, WW 1982] (KNT 2812 BRIT).

Lantana urticoides Hayek – COMMON LANTANA; Native; Perennial; Sp/

Su/W; INT; G5 [Bw 1978] (KNT 2400 BRIT).

Phyla lanceolata (Michx.) Greene – LANCELEAF FOGFRUIT; Native; Perennial; Sp/Su/F; INT; G5 (#).

Phyla nodiflora (L.) Greene – SAWTOOTH FROGFRUIT; Native; Perennial; Sp/Su/F/W; INT; G5 [Bw 1978] (RJO 8074e BRIT).

Verbena bonariensis L. – PRETTY VERBENA; Exotic; Annual/Biennial/Perennial; Sp/Su/F; INT; G5 (RJO 8139e BRIT).

Verbena bracteata Cav. ex Lag. & Rodr. – BIGBRACT VERBENA; Native; Annual/Biennial/Perennial; Sp/Su/F; INT; G5 [Bw 1978, WW 1982] (KNT 2355 BRIT).

Verbena halei Small – TEXAS VERVAIN; Native; Perennial; Sp/Su/F/W; INT; G5 [Wh 1933, Bw 1978, WW 1982] (KNT 2343 BRIT).

Verbena incompta P.W. Michael – BRAZILIAN VERBENA; Exotic; Annual; Sp/Su/F; (RJO 10813e BRIT).

Verbena plicata Greene – WHITEVEIN VERBENA; Native; Perennial; Sp/Su/W; WEST; G5 (RJO 7391e BRIT).

VIOLACEAE

Hybanthus verticillatus (Ortega) Baill. – GREEN VIOLET; Native; Perennial; Sp/Su/W; WEST; G4 (KNT 2479 BRIT).

Viola missouriensis Greene – MISSOURI VIOLET; Native; Annual/Perennial; Sp/W; INT; G5 (RJO 10447 BRIT).

VITACEAE

Ampelopsis cordata Michx. – HEARTLEAF PEPPERVINE; Native; perennial; Sp/Su; EAST; G5 [Wh 1933] (RJO 10648e BRIT).

Cissus trifoliata (L.) L. – TREEBINE; Native; Perennial; Sp/Su/F; INT; G5 [Bw 1978, WW 1982] (KNT 2512 BRIT).

[^]*Parthenocissus heptaphylla* (Buckl.) Britt. ex Small – SEVENLEAF CREEPER; Native; Perennial; Su/F; INT; G4 (KNT 2489 BRIT).

Parthenocissus inserta (Kerner) Fritsch – THICKET CREEPER; Native; Perennial; Sp/Su; INT; G5 (KNT 2788 BRIT).

Parthenocissus quinquefolia (L.) Planch. – VIRGINIA CREEPER; Native; Perennial; Sp/Su/F/W; EAST; G5 [Bw 1978] (RJO 11396e BRIT).

[~]*Vitis cinerea* (Engelm.) Engelm. ex Millard var. *helleri* (Bailey) M.O. Moore – WINTER GRAPE; Native; Perennial; Sp/Su; INT; GU/GNR/TU/TNR [Wh 1933] (Whitehouse s.n.[00289767] TEX).

[~]*Vitis monticola* Buckl. – MOUNTAIN GRAPE; Native; Perennial; Sp; INT; G4 (KNT 2500 BRIT).

Vitis mustangensis Buckl. – MUSTANG GRAPE; Native; Perennial; Su; EAST; G4 [Bw 1978] (KNT 2684 BRIT).

ZYGOPHYLLACEAE

Kallstroemia hirsutissima Vail ex Small – HAIRY CALTROP; Native; Annual; Sp/Su/F; WEST; G5 (RJO 10698e BRIT).

Kallstroemia parviflora J.B.S. Norton – WARTY CALTROP; Native; Annual; Sp/Su/F; INT; G5 (RJO 10816e BRIT).

⁺*Tribulus terrestris* L. – GOATHEAD; Exotic; Annual; Sp/Su/F/W; [Bw 1978] (RJO 10662e BRIT).

ACKNOWLEDGMENTS

We thank David Riskind, Doug Cochran, Scott Whitener, and Sonny Solis from Texas Parks and Wildlife for permits and assistance in accessing Enchanted Rock; Alyssa Austin, Grace Noble, Tiana Rehman, and Brooke Best for their assistance in the field; Kay Stansbury for her assistance with entering data; Jason Singhurst and Jackie Pool for their reviews of the manuscript; and the following herbaria for loans or use of facilities to examine specimens: Botanical Research Institute of Texas (BRIT, SMU, VDB), University of Oklahoma (OKL), Texas A&M University (TAMU), and University of Texas (TEX-LL).

REFERENCES

BUTTERWICK, M. 1978. A survey of the flora of Enchanted Rock and vicinity Llano and Gillespie counties, Texas. LBJ School of Public Affairs, Univ. of Texas, Austin, Texas, U.S.A.

- BUREAU OF ECONOMIC GEOLOGY. 1992. Geologic map of Texas: University of Texas at Austin, Virgil E. Barnes, project supervisor, Hartmann, B.M. and Scranton, D.F., cartography, scale 1:500,000.
- DIGGS, G.M., JR. & B.L. LIPSCOMB. 2014. The ferns and lycophytes of Texas. Sida, Bot. Misc. 38. Austin College, Sherman and Botanical Research Institute of Texas, Fort Worth, U.S.A.
- GIRVETZ, E.H., C. ZGANJAR, G.T. RABER, E.P. MAURER, P. KAREIVA, & J.J. LAWLER. 2009. Applied climate-change analysis: the climate wizard tool. PLOS ONE 4(12): e8320. doi:10.1371/journal.pone.0008320
- KARTESZ, J.T., THE BIOTA OF NORTH AMERICA PROGRAM (BONAP). 2015. Taxonomic Data Center. (<http://www.bonap.net/tdc>). Chapel Hill, North Carolina, U.S.A. [maps generated from Kartesz, J.T. 2015. Floristic Synthesis of North America, Version 1.0. Biota of North America Program (BONAP). (in press)]
- LUDEKE, K., D. GERMAN, & J. SCOTT. 2010. Texas vegetation classification project: interpretive booklet for phase 1. Texas Parks and Wildlife Department and Texas Natural Resources Information System.
- NATURESERVE. 2014. NatureServe Explorer: An online encyclopedia of life [web application]. Version 7.1. NatureServe, Arlington, Virginia. Available <http://explorer.natureserve.org>. (Accessed: February 25, 2016).
- NOAA. 2015. National Centers for Environmental Information, National Oceanic Atmospheric Administration. Available at ncdc.noaa.gov. Accessed August 2015.
- O'KENNON, R.J. & D. TROCK. 2003. A new species of *Packera* (Asteraceae) from the Edward's Plateau of Texas. Sida 20:945–952.
- O'KENNON, R.J. & K. TAYLOR. 2015. *Cyperus granitophilus* (Cyperaceae), a granite outcrop endemic, new for Texas and Oklahoma (U.S.A.). J. Bot. Res. Inst. Texas 9:251–257.
- PEEL, M.C., B.L. FINLAYSON, & T.A. MCMAHON. 2007. Updated world map of the Koppen-Geiger climate classification. Hydrology and Earth System Sciences 11:1633–1644.
- ROHRER, J. R. 2014. *Prunus*. In: Flora of North America Editorial Committee, eds. 1993+. Flora of North America North of Mexico. 19+ vols. New York and Oxford. Vol. 9.
- SINGHURST, J.R., L.L. SANCHEZ, D. FRELS, JR., T.W. SCHWERTNER, M. MITCHELL, S. MOREN, & W.C. HOLMES. 2007. The vascular flora of Mason Mountain Wildlife Management Area, Mason County, Texas. Southeastern Naturalist 6:683–692.
- TEXASINVASIVES.ORG. 2011. Available at texasinvasives.org. Accessed August 2015.
- TEXAS PARKS AND WILDLIFE: ENCHANTED ROCK STATE NATURAL AREA. 2015. Available at <http://tpwd.texas.gov/state-parks/enchanted-rock>. Accessed October 2015.
- WALTERS, T. & R. WYATT. 1982. The vascular flora of granite outcrops in the Central Mineral Region of Texas. J. Torrey Bot. Soc. 109:344–364.
- WHITEHOUSE, E. 1931. Ecology of Enchanted Rock vegetation. M.S. Thesis, Univ. of Texas, Austin, Texas, U.S.A.
- WHITEHOUSE, E. 1933. Plant succession of central Texas granite. Ecology 14:391–405.
- WILSON, J.B., R.K. PEET, J. DENGLER & M. PARTEL. 2012. Plant species richness: The world records. J. Veg. Sci. 23:796–802.