

## Checklist of the Cichlid Fishes of Lake Malawi (Lake Nyasa/Niassa)

by Michael K. Oliver, Ph.D.

Peabody Museum of Natural History, Yale University

**Updated 15 October 2021**

First posted June 1999

The cichlids of Lake Malawi constitute the largest vertebrate species flock and largest lacustrine fish fauna on earth. This list includes all cichlid species, and the few subspecies, that have been formally described and named. Many — several hundred — additional endemic cichlid species are known but still undescribed, and this fact must be considered in assessing the biodiversity of the lake. Recent estimates of the total size of the lake's cichlid fauna, counting both described and known but undescribed species, range from 700–843 species (Turner et al., 2001; Snoeks, 2001; Konings, 2007) or even 1000 species (Konings 2016). Additional undescribed species are still frequently being discovered, particularly in previously unexplored isolated locations and in deep water.

The entire Lake Malawi cichlid meta-flock is composed of two, possibly separate, endemic assemblages, the “Hap” group and the Mbuna group. Neither has been convincingly shown to be monophyletic. Membership in one or the other, or nonendemic status, is indicated in the checklist below for each genus, as is the type species of each endemic genus. The classification and synonymies are primarily based on the [Eschmeyer's Catalog of Fishes](#) with a few deviations. All synonymized genera and species should now be listed under their senior synonym.

Nearly all species are endemic to L. Malawi, in some cases extending also into the upper Shiré River including Lake Malombe and even into the middle Shiré. The nonendemic species number only four or five — *Astatotilapia calliptera*, *Serranochromis robustus*, *Oreochromis shiranus* (which is, however, represented in the Lake by an endemic subspecies), *Coptodon rendalli*, and one possibly occurring species, *Pseudocrenilabrus philander philander*.

**Latest changes: Added two new mbuna species, *Maylandia gallireyae* and *M. ngarae***, both described by Miller, Konings, & Stauffer, 2021. (Those authors placed the new species in *Metriaclima* which is a junior synonym of *Maylandia*; see [Eschmeyer's Catalog of Fishes](#).)

The now **58 genera** and the **415 formally named species** are numbered separately; the few subspecies recognized are indented under the nominate subspecies. A species in each genus is illustrated herein. Photographs of many others of these fishes, and complete bibliographic citations of the taxonomic publications, are available on my Web site at [MalawiCichlids.com](#).

---

**1. *Abactochromis*** Oliver & Arnegard, 2010 — Endemic:  
Mbuna group

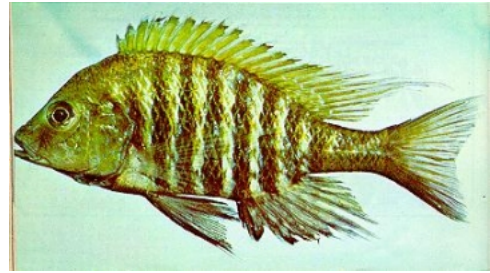
1. *Abactochromis labrosus* (Trewavas, 1935) **type species**



*Abactochromis labrosus*. Photo © M. K. Oliver

**2. *Alticorpus*** Stauffer & McKaye, 1988 — Endemic:  
“Hap” group

2. *Alticorpus geoffreyi* Snoeks & Walapa, 2004
3. *Alticorpus macrocleithrum* (Stauffer & McKaye, 1985)
4. *Alticorpus mentale* Stauffer & McKaye, 1988 **type species**
5. *Alticorpus pectinatum* Stauffer & McKaye, 1988
6. *Alticorpus peterdaviesi* (Burgess & Axelrod, 1973)
7. *Alticorpus profundicola* Stauffer & McKaye, 1988



*Alticorpus peterdaviesi*. Photo © H. R. Axelrod

**3. *Aristochromis*** Trewavas, 1935 — Endemic: “Hap”  
group

8. *Aristochromis christyi* Trewavas, 1935 **type species**



*Aristochromis christyi*. Photo © Frank Panis

**4. *Astatotilapia*** Pellegrin, 1904 — Nonendemic

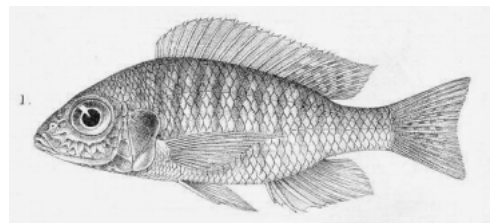
9. *Astatotilapia calliptera* (Günther, 1894)



*Astatotilapia calliptera*. Photo © M. K. Oliver

**5. *Aulonocara*** Regan, 1922 — Endemic: “Hap” group

10. *Aulonocara aquilonium* Konings, 1995
11. *Aulonocara auditor* (Trewavas, 1935)
12. *Aulonocara baenschi* Meyer & Riehl, 1985
13. *Aulonocara brevinidus* Konings, 1995
14. *Aulonocara brevirostre* (Trewavas, 1935)
15. *Aulonocara ethelwynnae* Meyer, Riehl, & Zetzsche, 1987
16. *Aulonocara gertrudae* Konings, 1995
17. *Aulonocara guentheri* Eccles, 1989
18. *Aulonocara hansbaenschi* Meyer, Riehl, & Zetzsche, 1987
19. *Aulonocara hueseri* Meyer, Riehl, & Zetzsche, 1987
20. *Aulonocara jacobfreibergi* (Johnson, 1974)
21. *Aulonocara koningsi* Tawil, 2003



*Aulonocara nyassae*. From Regan (1922)

22. *Aulonocara korneliae* Meyer, Riehl, & Zetsche, 1987
  23. *Aulonocara maylandi maylandi* Trewavas, 1984
  24. *Aulonocara maylandi kandeensis* Tawil & Allgayer, 1987
  25. *Aulonocara nyassae* Regan, 1922 **type species**
  26. *Aulonocara rostratum* Trewavas, 1935 [synonym: *A. macrochir* Trewavas, 1935]
  27. *Aulonocara saulosi* Meyer, Riehl, & Zetsche, 1987
  28. *Aulonocara steveni* Meyer, Riehl, & Zetsche, 1987
  29. *Aulonocara stonemani* (Burgess & Axelrod, 1973)
  30. *Aulonocara stuartgranti* Meyer & Riehl, 1985
  31. *Aulonocara trematocephalum* (Boulenger, 1901)
- 

**6. *Buccochromis*** Eccles & Trewavas, 1989 — Endemic:  
“Hap” group

32. *Buccochromis atritaeniatus* (Regan, 1922)
33. *Buccochromis heterotaenia* (Trewavas, 1935)
34. *Buccochromis lepturus* (Regan, 1922)
35. *Buccochromis nototaenia* (Boulenger, 1902) **type species**
36. *Buccochromis oculatus* (Trewavas, 1935)
37. *Buccochromis rhoadesii* (Boulenger, 1908)
38. *Buccochromis spectabilis* (Trewavas, 1935)



*Buccochromis rhoadesii*. Photo © M. K. Oliver

**7. *Caprichromis*** Eccles & Trewavas, 1989 — Endemic:  
“Hap” group

39. *Caprichromis liemi* (McKaye & Mackenzie, 1982)
40. *Caprichromis orthognathus* (Trewavas, 1935) **type species**



*Caprichromis orthognathus*. Photo © M. K. Oliver

**8. *Champsochromis*** Boulenger, 1915 — Endemic: “Hap”  
group

41. *Champsochromis caeruleus* (Boulenger, 1908) **type species**
42. *Champsochromis spilorrhynchus* (Regan, 1922)



*Champsochromis caeruleus*. Photo © F. Panis

**9. *Cheilochromis*** Eccles & Trewavas, 1989 — Endemic:  
“Hap” group

43. *Cheilochromis euchilus* (Trewavas, 1935) **type species**



*Cheilochromis euchilus*. Photo © M. K. Oliver

**10. *Chilotilapia*** Boulenger, 1908 — Endemic: “Hap”  
group

44. *Chilotilapia rhoadesii* Boulenger, 1908 **type species**



*Chilotilapia rhoadesii*. Photo © M. K. Oliver

**11. *Chindongo*** Li, Konings, & Stauffer, 2016 — Endemic: Mbuna group

45. *Chindongo ater* (Stauffer, 1988)  
46. *Chindongo bellicosus* Li, Konings, & Stauffer, 2016 **type species**  
47. *Chindongo cyaneus* (Stauffer, 1988)  
48. *Chindongo demasoni* (Konings, 1994)  
49. *Chindongo elongatus* (Fryer, 1956)  
50. *Chindongo flavus* (Stauffer, 1988)  
51. *Chindongo heteropictus* (Staeck, 1980)  
52. *Chindongo longior* (Seegers, 1996)  
53. *Chindongo minutus* (Fryer, 1956)  
54. *Chindongo saulosi* (Konings, 1990)  
55. *Chindongo socolofi* (Johnson, 1974)



*Chindongo bellicosus*. Photo © M. K. Oliver

**12. *Copadichromis*** Eccles & Trewavas, 1989 — Endemic:  
“Hap” group

56. *Copadichromis atripinnis* Stauffer & Sato, 2002  
57. *Copadichromis azureus* Konings, 1990  
58. *Copadichromis borleyi* (Iles, 1960)  
59. *Copadichromis chizumuluensis* Stauffer & Konings, 2006  
60. *Copadichromis chrysonotus* (Boulenger, 1908)



*Copadichromis chrysonotus*. Photo © M.K. Oliver



61. *Copadichromis cyaneus* (Trewavas, 1935)
  62. *Copadichromis cyanocephalus* Stauffer & Konings, 2006
  63. *Copadichromis diplostigma* Stauffer & Konings, 2006
  64. *Copadichromis geertsi* Konings, 1999
  65. *Copadichromis ilesi* Konings, 1999
  66. *Copadichromis insularis* Stauffer & Konings, 2006
  67. *Copadichromis jacksoni* (Iles, 1960)
  68. *Copadichromis likomae* (Iles, 1960)
  69. *Copadichromis mbenjii* Konings, 1990
  70. *Copadichromis melas* Stauffer & Konings, 2006
  71. *Copadichromis mloto* (Iles, 1960)
  72. *Copadichromis nkatae* (Iles, 1960)
  73. *Copadichromis parvus* Stauffer & Konings, 2006
  74. *Copadichromis pleurostigma* (Trewavas, 1935)
  75. *Copadichromis pleurostigmoides* (Iles, 1960)
  76. *Copadichromis quadrimaculatus* (Regan, 1922) **type species**
  77. *Copadichromis trewavasae* Konings, 1999
  78. *Copadichromis trimaculatus* (Iles, 1960)
  79. *Copadichromis verduyni* Konings, 1990
  80. *Copadichromis virginalis* (Iles, 1960)
- 

**13. *Coptodon*** Gervais, 1853 — Nonendemic

81. *Coptodon rendalli* (Boulenger, 1897)



*Coptodon rendalli*. Photo © M. K. Oliver

---

**14. *Corematodus*** Boulenger, 1897 — Endemic: “Hap” group

82. *Corematodus shiranus* Boulenger, 1897 **type species**
83. *Corematodus taeniatus* Trewavas, 1935



*Corematodus shiranus*. Photo © M. K. Oliver

---

**15. *Ctenopharynx*** Eccles & Trewavas, 1989 — Endemic: “Hap” group

- 84. *Ctenopharynx intermedius* (Günther, 1864) **type species**
- 85. *Ctenopharynx nitidus* (Trewavas, 1935)
- 86. *Ctenopharynx pictus* (Trewavas, 1935)



*Ctenopharynx intermedius*. Photo © Adele Rotherham

**16. *Cyathochromis*** Trewavas, 1935 — Endemic: Mbuna group

- 87. *Cyathochromis obliquidens* Trewavas, 1935 **type species**



*Cyathochromis obliquidens*. Photo © M. K. Oliver

**17. *Cynotilapia*** Regan, 1922 [Synonym: *Microchromis* Johnson, 1975] — Endemic: Mbuna group

- 88. *Cynotilapia afra* (Günther, 1894) **type species**
- 89. *Cynotilapia aurifrons* (Tawil, 2011)
- 90. *Cynotilapia axelrodi* Burgess, 1976
- 91. *Cynotilapia chilundu* Li, Konings, & Stauffer, 2016
- 92. *Cynotilapia zebroides* (Johnson, 1975)



*Cynotilapia zebroides*. Photo © M. K. Oliver

**18. *Cyrtocara*** Boulenger, 1902 — Endemic: “Hap” group

- 93. *Cyrtocara moorii* Boulenger, 1902 **type species**



*Cyrtocara moorii*. Photo © M. K. Oliver

**19. *Dimidiochromis*** Eccles & Trewavas, 1989 — Endemic:  
“Hap” group

- 94. *Dimidiochromis compressiceps* (Boulenger, 1908)
- 95. *Dimidiochromis dimidiatus* (Günther, 1864)
- 96. *Dimidiochromis kiwinge* (Ahl, 1926)
- 97. *Dimidiochromis strigatus* (Regan, 1922) **type species**



*Dimidiochromis strigatus*. Photo © M. K. Oliver

---

**20. *Diplotaxodon*** Trewavas, 1935 — Endemic: “Hap” group

- 98. *Diplotaxodon aeneus* Turner & Stauffer, 1998
- 99. *Diplotaxodon altus* Stauffer, Phiri, & Konings, 2018
- 100. *Diplotaxodon apogon* Turner & Stauffer, 1998
- 101. *Diplotaxodon argenteus* Trewavas, 1935 **type species**
- 102. *Diplotaxodon dentatus* Stauffer & Konings, 2021
- 103. *Diplotaxodon ecclesi* Burgess & Axelrod, 1973
- 104. *Diplotaxodon greenwoodi* Stauffer & McKaye, 1986
- 105. *Diplotaxodon limnothrissa* Turner, 1994
- 106. *Diplotaxodon longimaxilla* Stauffer, Phiri, & Konings, 2018
- 107. *Diplotaxodon macrops* Turner & Stauffer, 1998



*Diplotaxodon argenteus*. Photo © M. K. Oliver

---

**21. *Docimodus*** Boulenger, 1897 — Endemic: “Hap” group

- 108. *Docimodus evelynae* Eccles & Lewis, 1976
- 109. *Docimodus johnstoni* Boulenger, 1897 **type species**



*Docimodus johnstoni*. Photo © M. K. Oliver

---

**22. *Exochochromis*** Eccles & Trewavas, 1989 — Endemic:  
“Hap” group

- 110. *Exochochromis anagenys* Oliver, 1989 **type species**



*Exochochromis anagenys*. Photo © M. K. Oliver

---

**23. *Fossorochromis*** Eccles & Trewavas, 1989 — Endemic:  
“Hap” group

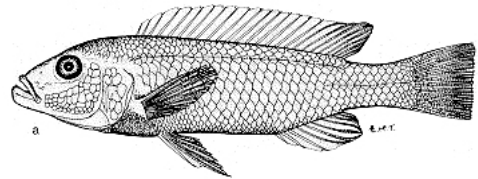
111. *Fossorochromis rostratus* (Boulenger, 1899) **type species**  
[synonym: *Haplochromis macrorhynchus* Regan, 1922]



*Fossorochromis rostratus*. Photo © M. K. Oliver

**24. *Genyochromis*** Trewavas, 1935 — Endemic: Mbuna  
group

112. *Genyochromis mento* Trewavas, 1935 **type species**



*Genyochromis mento*. From Ribbink et al. (1983)

**25. *Gephyrochromis*** Boulenger, 1901 [Synonym: *Christyella*  
Trewavas, 1935] — Endemic: Mbuna group

113. *Gephyrochromis lawsi* Fryer, 1957  
114. *Gephyrochromis moorii* Boulenger, 1901 **type species**  
[synonym: *Christyella nyasana* Trewavas, 1935]



*Gephyrochromis lawsi*. Photo © Ad Konings

**26. *Hemitaeniochromis*** Eccles & Trewavas, 1989 —  
Endemic: “Hap” group

115. *Hemitaeniochromis brachyrhynchus* Oliver, 2012  
116. *Hemitaeniochromis urotaenia* (Regan, 1922) **type species**



*Hemitaeniochromis urotaenia*.  
Photo © M. K. Oliver



**27. *Hemitalapia*** Boulenger, 1902 — Endemic: “Hap” group

117. *Hemitalapia oxyrhynchus* Boulenger, 1902 **type species**



*Hemitalapia oxyrhynchus*. Photo © M. K. Oliver

**28. *Iodotropheus*** Oliver & Loiselle, 1972 — Endemic: Mbuna group

118. *Iodotropheus sprengerae sprengerae* Oliver & Loiselle, 1972 **type species**  
118a. *Iodotropheus sprengerae declivitas* Stauffer, 1994  
119. *Iodotropheus stuartgranti* Konings, 1990



*Iodotropheus sprengerae*. Photo © M. K. Oliver

**29. *Labeotropheus*** Ahl, 1926 — Endemic: Mbuna group

120. *Labeotropheus artatorostris* Pauers, 2017  
121. *Labeotropheus chlorosiglos* Pauers, 2016  
122. *Labeotropheus fueelleborni* Ahl, 1926 **type species** [synonym: *L. curvirostris* Ahl, 1926]  
123. *Labeotropheus simoneae* Pauers, 2016  
124. *Labeotropheus trewavasae* Fryer, 1956



*Labeotropheus fueelleborni*. Photo © M. K. Oliver

**30. *Labidochromis*** Trewavas, 1935 — Endemic: Mbuna group

125. *Labidochromis caeruleus* Fryer, 1956  
126. *Labidochromis chisumulae* Lewis, 1982  
127. *Labidochromis flavigulis* Lewis, 1982  
128. *Labidochromis freibergi* Johnson, 1974  
129. *Labidochromis gigas* Lewis, 1982  
130. *Labidochromis heterodon* Lewis, 1982  
131. *Labidochromis ianthinus* Lewis, 1982  
132. *Labidochromis joanjohnsonae* Johnson, 1974 [synonym: *Melanochromis exasperatus* Burgess, 1976]  
133. *Labidochromis lividus* Lewis, 1982  
134. *Labidochromis maculicauda* Lewis, 1982  
135. *Labidochromis mathotho* Burgess & Axelrod, 1976  
136. *Labidochromis mbenjii* Lewis, 1982



*Labidochromis heterodon*. Photo © M. K. Oliver

- 137. *Labidochromis mylodon* Lewis, 1982
  - 138. *Labidochromis pallidus* Lewis, 1982
  - 139. *Labidochromis shiranus* Lewis, 1982
  - 140. *Labidochromis strigatus* Lewis, 1982
  - 141. *Labidochromis textilis* Oliver, 1975
  - 142. *Labidochromis vellicans* Trewavas, 1935 **type species**
  - 143. *Labidochromis zebroides* Lewis, 1982
- 

**31. *Lethrinops* Regan, 1922** — Endemic: “Hap” group

- 144. *Lethrinops albus* Regan, 1922
  - 145. *Lethrinops altus* Trewavas, 1931
  - 146. *Lethrinops argenteus* Ahl, 1926
  - 147. *Lethrinops auritus* (Regan, 1922)
  - 148. *Lethrinops christyi* Trewavas, 1931
  - 149. *Lethrinops furcifer* Trewavas, 1931
  - 150. *Lethrinops gossei* Burgess & Axelrod, 1973
  - 151. *Lethrinops leptodon* Regan, 1922
  - 152. *Lethrinops lethrinus* (Günther, 1894) **type species**
  - 153. *Lethrinops longimanus* Trewavas, 1931
  - 154. *Lethrinops longipinnis* Eccles & Lewis, 1978
  - 155. *Lethrinops lunaris* Trewavas, 1931
  - 156. *Lethrinops macracanthus* Trewavas, 1931
  - 157. *Lethrinops macrochir* (Regan, 1922)
  - 158. *Lethrinops macrophthalmus* (Boulenger, 1908)
  - 159. *Lethrinops marginatus* Ahl, 1926
  - 160. *Lethrinops micrentodon* (Regan, 1922)
  - 161. *Lethrinops microdon* Eccles & Lewis, 1977
  - 162. *Lethrinops microstoma* Trewavas, 1931
  - 163. *Lethrinops mylodon mylodon* Eccles & Lewis, 1979
  - 163a. *Lethrinops mylodon borealis* Eccles & Lewis, 1979
  - 164. *Lethrinops oculatus* Trewavas, 1931
  - 165. *Lethrinops parvidens* Trewavas, 1931
  - 166. *Lethrinops stridei* Eccles & Lewis, 1977
  - 167. *Lethrinops turneri* Ngatunga & Snoeks, 2003
- 



*Lethrinops mylodon*. Photo © George Turner

**32. *Lichnochromis*** Trewavas, 1935 — Endemic: “Hap” group

168. *Lichnochromis acuticeps* Trewavas, 1935 **type species**



*Lichnochromis acuticeps*. Photo © M. K. Oliver

---

**33. *Maylandia*** Meyer & Foerster, 1984 [Synonym: *Metriaclima* Stauffer, Bowers, Kellogg, & McKaye (1997); see the [Catalog of Fishes](#). Originally proposed as a subgenus of *Pseudotropheus*. Gender of *Metriaclima* is neuter but that of *Maylandia* is feminine, hence the different endings of adjectival species names originally described under the former genus name.] — Endemic: Mbuna group

- 169. *Maylandia aurora* (Burgess, 1976)
- 170. *Maylandia barlowi* (McKaye & Stauffer, 1986)
- 171. *Maylandia benetos* (Stauffer, Bowers, Kellogg, & McKaye, 1997)
- 172. *Maylandia callainos* (Stauffer & Hert, 1992)
- 173. *Maylandia chrysomallos* (Stauffer, Bowers, Kellogg, & McKaye, 1997)
- 174. *Maylandia cyneusmarginata* (Stauffer, Bowers, Kellogg, & McKaye, 1997)
- 175. *Maylandia emmiltos* (Stauffer, Bowers, Kellogg, & McKaye, 1997)
- 176. *Maylandia estherae* (Konings, 1995)
- 177. *Maylandia fainzilberi* (Staeck, 1976)
- 178. *Maylandia flavicauda* (Li, Konings, & Stauffer, 2016)
- 179. *Maylandia flavifemina* (Konings & Stauffer, 2006)
- 180. *Maylandia gallireyae* (Miller, Konings, & Stauffer, 2021)
- 181. *Maylandia glaucos* (Ciccotto, Konings, & Stauffer, 2011)
- 182. *Maylandia greshakei* (Meyer & Foerster, 1984) **type species**
- 183. *Maylandia hajomaylandi* (Meyer & Scharl, 1984)
- 184. *Maylandia koningsi* (Stauffer, 2018)
- 185. *Maylandia lombardoi* (Burgess, 1977)
- 186. *Maylandia lundoensis* (Stauffer, Black, & Konings, 2013)
- 187. *Maylandia mbenjii* (Stauffer, Bowers, Kellogg, & McKaye, 1997)
- 188. *Maylandia midomo* (Stauffer, Black, & Konings, 2013)
- 189. *Maylandia mossambica* (Ciccotto, Konings, & Stauffer, 2011)
- 190. *Maylandia ngarae* (Miller, Konings, & Stauffer, 2021)
- 191. *Maylandia nigrodorsalis* (Stauffer, Black, & Konings, 2013)
- 192. *Maylandia nkhunguensis* (Ciccotto, Konings, & Stauffer, 2011)
- 193. *Maylandia pambazuko* (Stauffer, Black, & Konings, 2013)
- 194. *Maylandia phaeos* (Stauffer, Bowers, Kellogg, & McKaye, 1997)
- 195. *Maylandia pulpican* (Tawil, 2002)



*Maylandia zebra*. From Ribbink et al. (1983)

196. *Maylandia pyrronotos* (Stauffer, Bowers, Kellogg, & McKaye, 1997) [synonym: *M. sandaracinos* (Stauffer, Bowers, Kellogg, & McKaye, 1997)]
  197. *Maylandia sciasma* (Ciccotto, Konings, & Stauffer, 2011)
  198. *Maylandia tarakiki* (Stauffer, Black, & Konings, 2013)
  199. *Maylandia thapsinogen* (Stauffer, Bowers, Kellogg, & McKaye, 1997)
  200. *Maylandia usisyae* (Li, Konings, & Stauffer, 2016)
  201. *Maylandia xanstomachus* (Stauffer & Boltz, 1989)
  202. *Maylandia xanthos* (Ciccotto, Konings, & Stauffer, 2011)
  203. *Maylandia zebra* (Boulenger, 1899) [synonym: *M. melabbranchion* (Stauffer, Bowers, Kellogg, & McKaye, 1997)]
- 

**34. *Mchenga*** Stauffer & Konings, 2006 — Endemic:  
“Hap” group

204. *Mchenga conophoros* (Stauffer, LoVullo, & McKaye, 1993)
205. *Mchenga cyclicos* (Stauffer, LoVullo, & McKaye, 1993) **type species**
206. *Mchenga eucinostomus* (Regan, 1922)
207. *Mchenga flavimanus* (Iles, 1960)
208. *Mchenga inornata* (Boulenger, 1908)
209. *Mchenga thinos* (Stauffer, LoVullo, & McKaye, 1993)



*Mchenga conophoros*. Photo © M. K. Oliver

**35. *Melanochromis*** Trewavas, 1935 — Endemic: Mbuna group

210. *Melanochromis auratus* (Boulenger, 1897)
  211. *Melanochromis baliodigma* Bowers & Stauffer, 1997 [synonym: *M. xanthodigma* Bowers & Stauffer, 1997]
  212. *Melanochromis chipokae* Johnson, 1975
  213. *Melanochromis dialeptos* Bowers & Stauffer, 1997
  214. *Melanochromis heterochromis* Bowers & Stauffer, 1993
  215. *Melanochromis kaskazini* Konings-Dudin, Konings, & *Melanochromis auratus*. Photo © M. K. Oliver Stauffer, 2009
  216. *Melanochromis lepidiadaptes* Bowers & Stauffer, 1997
  217. *Melanochromis lorae* Johnson, 1975 [synonym: *M. parallelus* Burgess & Axelrod, 1976]
  218. *Melanochromis melanopterus* Trewavas, 1935 **type species** [synonym: *Melanochromis mellitus* Johnson, 1976]
  219. *Melanochromis mossambiquensis* Konings-Dudin, Konings, & Stauffer, 2009
  220. *Melanochromis mpoto* Konings & Stauffer, 2012
  221. *Melanochromis robustus* Johnson, 1986
  222. *Melanochromis simulans* Eccles, 1973
  223. *Melanochromis vermivorus* Trewavas, 1935
  224. *Melanochromis wochepa* Konings-Dudin, Konings, & Stauffer, 2009
- 





**36. *Mylochromis*** Regan, 1922 [Synonyms: *Maravichromis* Eccles & Trewavas, 1989; *Platygnathochromis* Eccles & Trewavas, 1989] — Endemic: “Hap” group

- 225. *Mylochromis anaphyrmus* (Burgess & Axelrod, 1973)
- 226. *Mylochromis balteatus* (Trewavas, 1935)
- 227. *Mylochromis chekopae* Turner & Howarth, 2001
- 228. *Mylochromis ensatus* Turner & Howarth, 2001
- 229. *Mylochromis epichorialis* (Trewavas, 1935)
- 230. *Mylochromis ericotaenia* (Regan, 1922)
- 231. *Mylochromis formosus* (Trewavas, 1935)
- 232. *Mylochromis gracilis* (Trewavas, 1935)
- 233. *Mylochromis guentheri* (Regan, 1922)
- 234. *Mylochromis incola* (Trewavas, 1935)
- 235. *Mylochromis labidodon* (Trewavas, 1935)
- 236. *Mylochromis lateristriga* (Günther, 1864) **type species**
- 237. *Mylochromis melanonotus* (Regan, 1922)
- 238. *Mylochromis melanotaenia* (Regan, 1922)
- 239. *Mylochromis mola* (Trewavas, 1935)
- 240. *Mylochromis mollis* (Trewavas, 1935)
- 241. *Mylochromis obtusus* (Trewavas, 1935)
- 242. *Mylochromis plagiotaenia* (Regan, 1922)
- 243. *Mylochromis semipalatus* (Trewavas, 1935)
- 244. *Mylochromis sphaerodon* (Regan, 1922)
- 245. *Mylochromis spilostichus* (Trewavas, 1935)



*Mylochromis lateristriga*. Photo © M. K. Oliver

---

**37. *Naevochromis*** Eccles & Trewavas, 1989 — Endemic: “Hap” group

- 246. *Naevochromis chrysogaster* (Trewavas, 1935) **type species**



*Naevochromis chrysogaster*. Photo © M.K. Oliver

---

**38. *Nimbochromis*** Eccles & Trewavas, 1989 — Endemic: “Hap” group

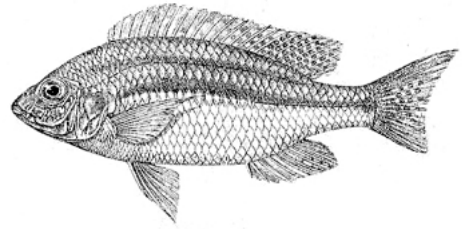
- 247. *Nimbochromis fuscotaeniatus* (Regan, 1922)
- 248. *Nimbochromis linni* (Burgess & Axelrod, 1974)
- 249. *Nimbochromis livingstonii* (Günther, 1894) **type species**
- 250. *Nimbochromis polystigma* (Regan, 1922) [synonyms: *N. maculimanus* (Regan, 1922); *N. pardalis* (Trewavas, 1935)]
- 251. *Nimbochromis venustus* (Boulenger, 1908) [synonym: *Haplochromis simulans* Regan, 1922]



*Nimbochromis livingstonii*. Photo © M. K. Oliver

**39. *Nyassachromis*** Eccles & Trewavas, 1989 — Endemic:  
“Hap” group

- 252. *Nyassachromis boadzulu* (Iles, 1960)
- 253. *Nyassachromis breviceps* (Regan, 1922) **type species**
- 254. *Nyassachromis leuciscus* (Regan, 1922)
- 255. *Nyassachromis microcephalus* (Trewavas, 1935)
- 256. *Nyassachromis nigritaeniatus* (Trewavas, 1935)
- 257. *Nyassachromis prostoma* (Trewavas, 1935)
- 258. *Nyassachromis purpurans* (Trewavas, 1935)
- 259. *Nyassachromis serenus* (Trewavas, 1935)



*Nyassachromis breviceps*. From Regan (1922)

---

**40. *Oreochromis*** Günther, 1889 — Nonendemic. [Except for *O. shiranus*, all L. Malawi species have been placed in the subgenus *Nyasalapia*, which also includes species not found in L. Malawi]

- 260. *Oreochromis (Nyasalapia) karongae* (Trewavas, 1941)  
[synonym: *Oreochromis saka* (Lowe, 1953)] —  
Endemic species
- 261. *Oreochromis (Nyasalapia) lidole* (Trewavas, 1941) —  
Endemic species, except also occurs in the crater lakes L.  
Kingiri and L. Chunguru in the Rungwe Mtns. in Tanzania  
some 50 km north of L. Malawi
- 262. *Oreochromis (Nyasalapia) squamipinnis* (Günther, 1864) —  
Endemic species
- 263. *Oreochromis (Oreochromis) shiranus shiranus* Boulenger,  
1897 — Endemic subspecies of a nonendemic species.  
*O. shiranus* is composed of two subspecies: *O. s. shiranus*, endemic to the Lake Malawi basin  
(including inflowing rivers and the upper Shiré River), and *O. s. chilwae*, endemic to Lakes Chilwa and  
Chiuta.



*Oreochromis* cf. *squamipinnis*. Photo © M.K. Oliver

---

**41. *Otopharynx*** Regan, 1920 — Endemic: “Hap” group

- 264. *Otopharynx aletes* Oliver, 2018
- 265. *Otopharynx alpha* Oliver, 2018
- 266. *Otopharynx antron* Cleaver, Konings, & Stauffer, 2009
- 267. *Otopharynx argyrosoma* (Regan, 1922)
- 268. *Otopharynx auromarginatus* (Boulenger, 1908) **type species**
- 269. *Otopharynx brooksi* Oliver, 1989
- 270. *Otopharynx decorus* (Trewavas, 1935)
- 271. *Otopharynx heterodon* (Trewavas, 1935)
- 272. *Otopharynx lithobates lithobates* Oliver, 1989
- 272a. *Otopharynx lithobates walteri* Konings, 1990
- 273. *Otopharynx mumboensis* Oliver, 2018
- 274. *Otopharynx ovatus* (Trewavas, 1935)
- 275. *Otopharynx pachycheilus* Arnegard & Snoeks, 2001

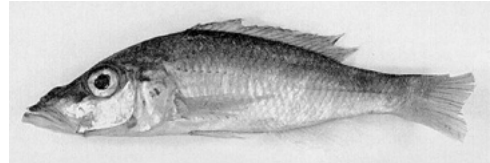


*Otopharynx auromarginatus*. Photo © Ad Konings

- 276. *Otopharynx panniculus* Oliver, 2018
  - 277. *Otopharynx peridodeka* Oliver, 2018
  - 278. *Otopharynx selenurus* Regan, 1922
  - 279. *Otopharynx speciosus* (Trewavas, 1935)
  - 280. *Otopharynx spelaeotes* Cleaver, Konings, & Stauffer, 2009
  - 281. *Otopharynx styrax* Oliver, 2018
  - 282. *Otopharynx tetraspilus* (Trewavas, 1935)
  - 283. *Otopharynx tetrastigma* (Günther, 1894)
- 

**42. *Pallidochromis*** Turner, 1994 — Endemic: “Hap” group

- 284. *Pallidochromis tokolosh* Turner, 1994 **type species**



*Pallidochromis tokolosh*. Photo © George Turner

**43. *Petrotilapia*** Trewavas, 1935 — Endemic: Mbuna group

- 285. *Petrotilapia chrysos* Stauffer & van Snik, 1996
- 286. *Petrotilapia flaviventris* Lundeba, Stauffer, & Konings, 2011
- 287. *Petrotilapia genalutea* Marsh, 1983
- 288. *Petrotilapia microgalana* Ruffing, Lambert, & Stauffer, 2006
- 289. *Petrotilapia mumboensis* Lundeba, Stauffer, & Konings, 2011
- 290. *Petrotilapia nigra* Marsh, 1983
- 291. *Petrotilapia palingnathos* Lundeba, Stauffer, & Konings, 2011
- 292. *Petrotilapia pyrosceles* Lundeba, Stauffer, & Konings, 2011
- 293. *Petrotilapia tridentiger* Trewavas, 1935 **type species**
- 294. *Petrotilapia xanthos* Lundeba, Stauffer, & Konings, 2011



*Petrotilapia tridentiger*. Photo © M. K. Oliver

**44. *Placidochromis*** Eccles & Trewavas, 1989 [synonym: *Electochromis* Eccles & Trewavas, 1989] — Endemic: “Hap” group

- 295. *Placidochromis acuticeps* Hanssens, 2004
- 296. *Placidochromis acutirostris* Hanssens, 2004
- 297. *Placidochromis argyrogaster* Hanssens, 2004
- 298. *Placidochromis boops* Hanssens, 2004
- 299. *Placidochromis borealis* Hanssens, 2004
- 300. *Placidochromis chilolae* Hanssens, 2004
- 301. *Placidochromis communis* Hanssens, 2004
- 302. *Placidochromis domirae* Hanssens, 2004



*Placidochromis macrognathus*. Photo © M.K. Oliver

303. *Placidochromis ecclesi* Hanssens, 2004
  304. *Placidochromis electra* (Burgess, 1979)
  305. *Placidochromis elongatus* Hanssens, 2004
  306. *Placidochromis fuscus* Hanssens, 2004
  307. *Placidochromis hennydaviesae* (Burgess & Axelrod, 1973)
  308. *Placidochromis intermedius* Hanssens, 2004
  309. *Placidochromis johnstoni* (Günther, 1894) [synonym: *Haplochromis sexfasciatus* Regan, 1922]
  310. *Placidochromis koningsi* Hanssens, 2004
  311. *Placidochromis lineatus* Hanssens, 2004
  312. *Placidochromis longimanus* (Trewavas, 1935) **type species**
  313. *Placidochromis longirostris* Hanssens, 2004
  314. *Placidochromis longus* Hanssens, 2004
  315. *Placidochromis lukomae* Hanssens, 2004
  316. *Placidochromis macroceps* Hanssens, 2004
  317. *Placidochromis macrognathus* Hanssens, 2004
  318. *Placidochromis mbunoides* Hanssens, 2004
  319. *Placidochromis milomo* Oliver, 1989
  320. *Placidochromis minor* Hanssens, 2004
  321. *Placidochromis minutus* Hanssens, 2004
  322. *Placidochromis msakae* Hanssens, 2004
  323. *Placidochromis nigribarbis* Hanssens, 2004
  324. *Placidochromis nkhatae* Hanssens, 2004
  325. *Placidochromis nkhotakotae* Hanssens, 2004
  326. *Placidochromis obscurus* Hanssens, 2004
  327. *Placidochromis ordinarius* Hanssens, 2004
  328. *Placidochromis orthognathus* Hanssens, 2004
  329. *Placidochromis pallidus* Hanssens, 2004
  330. *Placidochromis phenochilus* (Trewavas, 1935)
  331. *Placidochromis platyrhynchus* Hanssens, 2004
  332. *Placidochromis polli* (Burgess & Axelrod, 1973)
  333. *Placidochromis rotundifrons* Hanssens, 2004
  334. *Placidochromis subocularis* (Günther, 1894)
  335. *Placidochromis trewavasae* Hanssens, 2004
  336. *Placidochromis turneri* Hanssens, 2004
  337. *Placidochromis vulgaris* Hanssens, 2004
-



**45. *Protomelas*** Eccles & Trewavas, 1989 [Synonym: *Electochromis* Eccles & Trewavas, 1989] —

Endemic: “Hap” group

- 338. *Protomelas annectens* (Regan, 1922)
- 339. *Protomelas dejunctus* Stauffer, 1993
- 340. *Protomelas fenestratus* (Trewavas, 1935)
- 341. *Protomelas insignis* (Trewavas, 1935)
- 342. *Protomelas kirkii* (Günther, 1894) **type species**
- 343. *Protomelas krampus* Dierickx & Snoeks, 2020
- 344. *Protomelas labridens* (Trewavas, 1935)
- 345. *Protomelas macrodon* Eccles, 1989
- 346. *Protomelas marginatus marginatus* (Trewavas, 1935)
- 346a. *Protomelas marginatus vuae* (Trewavas, 1935)
- 347. *Protomelas ornatus* (Regan, 1922) [synonyms: *Haplochromis. festivus* Trewavas, 1935; *Haplochromis lobochilus* Trewavas, 1935]
- 348. *Protomelas pleurotaenia* (Boulenger, 1901) [synonym: *Haplochromis microstoma* Regan, 1922]
- 349. *Protomelas similis* (Regan, 1922)
- 350. *Protomelas spilonotus* (Trewavas, 1935)
- 351. *Protomelas spilopterus* (Trewavas, 1935)
- 352. *Protomelas taeniolatus* (Trewavas, 1935) [synonym: *Haplochromis cancellus* Greenwood, 1963]
- 353. *Protomelas triaenodon* (Trewavas, 1935)
- 354. *Protomelas virgatus* (Trewavas, 1935)



*Protomelas kirkii*. Photo © George Turner

---

**46. *Pseudocrenilabrus*** Fowler, 1934 — Nonendemic

Note: This genus and species is listed as occurring in L. Malawi by CLOFFA, *Checklist of the Freshwater Fishes of Africa* (1991, Vol. IV: 396). No literature or specimen citation was provided in support of this listing. However, [FishBase](#) states that it occurs in “...lagoons and rivers associated with Lake Malawi, but not the lake itself,” citing Snoeks & Hanssens (2004). The occurrence of this species in Lake Malawi is doubtful and should be substantiated by a museum specimen. It has, however, been collected from a swampy lakeside backwater, Kampambe Lagoon, at Nkhota Kota, Malawi (Jackson, 1961).

- 355. *Pseudocrenilabrus philander philander* (Weber, 1897)

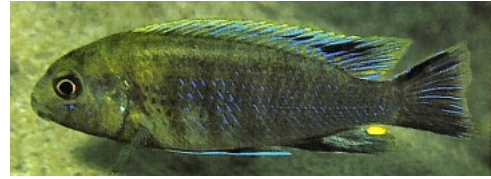


*Pseudocrenilabrus philander philander*.  
Photo © George Turner

**47. *Pseudotropheus*** Regan, 1922 — Endemic: Mbuna group.

Note: Many additional species were formerly placed in *Pseudotropheus* within two groups originally proposed as subgenera, *Maylandia* and *Tropheops*, both now recognized as full genera (which see). Other species formerly in *Pseudotropheus* have been removed to a new genus *Chindongo*.

- 356. *Pseudotropheus benetos* (Bowers & Stauffer, 1997)
- 357. *Pseudotropheus brevis* (Trewavas, 1935)
- 358. *Pseudotropheus crabro* (Ribbink & Lewis, 1982)
- 359. *Pseudotropheus cyaneorhabdos* (Bowers & Stauffer, 1997)
- 360. *Pseudotropheus elegans* Trewavas, 1935
- 361. *Pseudotropheus fuscus* Trewavas, 1935 [synonym:  
*Pseudotropheus fuscoides* Fryer, 1956]
- 362. *Pseudotropheus galanos* Stauffer & Kellogg, 2002
- 363. *Pseudotropheus interruptus* (Johnson, 1975) [synonym: *Melanochromis elastodema* Bowers & Stauffer, 1997]
- 364. *Pseudotropheus johannii* Eccles, 1973
- 365. *Pseudotropheus lanisticola* Burgess, 1976 [synonym: *Metriaclima purum* Stauffer, 1991]
- 366. *Pseudotropheus livingstonii* (Boulenger, 1899)
- 367. *Pseudotropheus lucerna* Trewavas, 1935
- 368. *Pseudotropheus perileucos* (Bowers & Stauffer, 1997)
- 369. *Pseudotropheus perspicax* (Trewavas, 1935)
- 370. *Pseudotropheus purpuratus* Johnson, 1976
- 371. *Pseudotropheus tursiops* Burgess & Axelrod, 1975
- 372. *Pseudotropheus williamsi* (Günther, 1894) **type species**

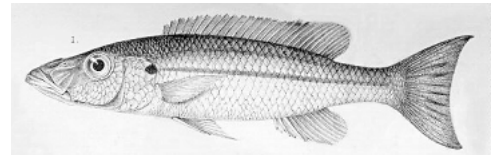


*Pseudotropheus lucerna*. Photo © Ad Konings

---

**48. *Rhamphochromis*** Regan, 1922 — Endemic: “Hap” group

- 373. *Rhamphochromis esox* (Boulenger, 1908) [synonyms: *R. leptosoma* Regan, 1922; *R. melanotus* Ahl, 1926]
- 374. *Rhamphochromis ferox* Regan, 1922
- 375. *Rhamphochromis longiceps* (Günther, 1864) **type species**
- 376. *Rhamphochromis macrophthalmus* Regan, 1922
- 377. *Rhamphochromis woodi* Regan, 1922 [synonyms:  
*R. brevis* Trewavas, 1935; *R. lucius* Ahl, 1926]



*Rhamphochromis macrophthalmus*.  
From Regan (1922)

---

**49. *Sciaenochromis*** Eccles & Trewavas, 1989 — Endemic: “Hap” group

- 378. *Sciaenochromis ahli* (Trewavas, 1935) **type species**  
[synonym: *Haplochromis serranoides* Ahl, 1926]
- 379. *Sciaenochromis benthicola* Konings, 1993
- 380. *Sciaenochromis fryeri* Konings, 1993
- 381. *Sciaenochromis psammophilus* Konings, 1993



*Sciaenochromis fryeri*. Photo © Paul V. Loiselle

**50. *Serranochromis*** Regan, 1920 — Nonendemic

382. *Serranochromis robustus robustus* (Günther, 1864)



*Serranochromis robustus*. Photo © M.K. Oliver

---

**51. *Stigmatochromis*** Eccles & Trewavas, 1989 — Endemic: “Hap” group

383. *Stigmatochromis macrorhynchus* Stauffer, Cleaver-Yoder, & Konings, 2011  
384. *Stigmatochromis melanchros* Stauffer, Cleaver-Yoder, & Konings, 2011  
385. *Stigmatochromis modestus* (Günther, 1894)  
386. *Stigmatochromis pholidophorus* (Trewavas, 1935)  
387. *Stigmatochromis pleurospilus* (Trewavas, 1935)  
388. *Stigmatochromis woodi* (Regan, 1922) **type species**



*Stigmatochromis woodi*. Photo © M.K. Oliver

---

**52. *Taeniochromis*** Eccles & Trewavas, 1989 — Endemic: “Hap” group

389. *Taeniochromis holotaenia* (Regan, 1922) **type species**  
[synonym: *Haplochromis bodyi* Ahl, 1926]



*Taeniochromis holotaenia*. Photo © Mark Smith

---

**53. *Taeniolethrinops*** Eccles & Trewavas, 1989 — Endemic: “Hap” group

390. *Taeniolethrinops cyrtonotus* (Trewavas, 1931)  
391. *Taeniolethrinops furcicauda* (Trewavas, 1931)  
392. *Taeniolethrinops laticeps* (Trewavas, 1931)  
393. *Taeniolethrinops praeorbitalis* (Regan, 1922) **type species**  
[synonyms: *Lethrinops fasciatus* Ahl, 1926; *L. macrorhynchus* Regan, 1922]



*Taeniolethrinops praeorbitalis*. Photo © M.K. Oliver

---

**54. *Tilapia*** Smith, 1840 — Nonendemic

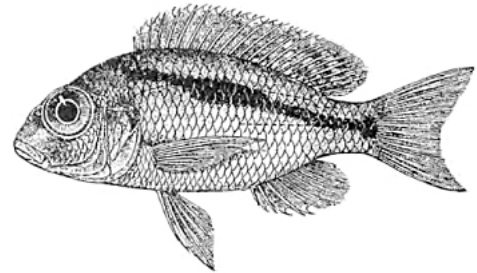
394. *Tilapia sparrmanii* Smith, 1840 **type species** [Note: G. Bell-Cross (*The Fishes of Rhodesia*. National Museums and Monuments of Rhodesia, Salisbury, 1976: 236) reported this tilapia to occur in L. Malawi and the same statement was repeated by Bell-Cross and J. L. Minshull in the revised edition of the same book (*The Fishes of Zimbabwe*. National Museums and Monuments of Zimbabwe, Harare, 1988: 271). B. Marshall (*The Fishes of Zimbabwe and their Biology*. *Smithiana* Monograph 3, 2011: 235) also states that it occurs in Lake Malawi and includes a dot for it just below the lake's southeast arm in the distribution map. No supporting details or literature citation are provided in any of these books. However, I was finally persuaded that **this species should be listed as part of the Lake Malawi fauna** by an email from Denis Tweddle (pers. commun. 27-Feb-2012); Denis wrote that "I have never seen it in the lake itself but it occurs right on the edge and must occasionally get into the lake. It is abundant (or at least was in 1976) around the gabions of the bridge over the entrance to Chia Lagoon and that could be regarded as an inlet of the lake." I agree; the road bridge over the Chia Lagoon inlet (which I have also driven over) is only 600 m from Lake Malawi proper, as can be measured in Google Earth. The channel between the lagoon and the lake proper appears quite uniform; *T. sparrmanii* would be expected to occur along its entire length.]



*Tilapia sparrmanii* from Lake Chilingali.  
Photo © George Turner

**55. *Tramitichromis*** Eccles & Trewavas, 1989 — Endemic:  
"Hap" group

395. *Tramitichromis brevis* (Boulenger, 1908) **type species**  
396. *Tramitichromis intermedius* (Trewavas, 1935)  
397. *Tramitichromis lituris* (Trewavas, 1931)  
398. *Tramitichromis trilineatus* (Trewavas, 1931)  
399. *Tramitichromis variabilis* (Trewavas, 1931)



*Tramitichromis brevis*. From Boulenger (1915)

**56. *Trematocranus*** Trewavas, 1935 — Endemic: "Hap"  
group

400. *Trematocranus labifer* (Trewavas, 1935)  
401. *Trematocranus microstoma* Trewavas, 1935 **type species**  
402. *Trematocranus pachychilus* Dierickx, Hanssens, Rusuwa,  
& Snoeks, 2018  
403. *Trematocranus placodon* (Regan, 1922)

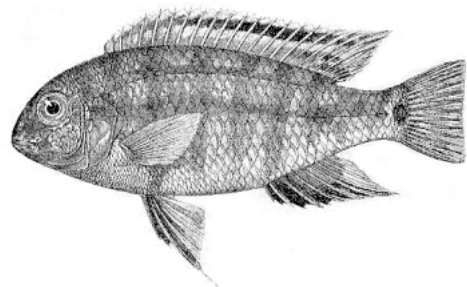


*Trematocranus placodon*. Photo © M.K. Oliver



**57. *Tropheops*** Trewavas, 1984 — Endemic: Mbuna group [Note: Originally proposed as a subgenus of *Pseudotropheus*]

- 404. *Tropheops biriwira* Li, Konings, & Stauffer, 2016
- 405. *Tropheops gracilior* (Trewavas, 1935)
- 406. *Tropheops kamtambo* Li, Konings, & Stauffer, 2016
- 407. *Tropheops kumwera* Li, Konings, & Stauffer, 2016
- 408. *Tropheops macrophthalmus* (Ahl, 1926)
- 409. *Tropheops microstoma* (Trewavas, 1935)
- 410. *Tropheops modestus* (Johnson, 1974)
- 411. *Tropheops novemfasciatus* (Regan, 1922)
- 412. *Tropheops romandi* (Colombe, 1979)
- 413. *Tropheops tropheops* (Regan, 1922) **type species**



*Tropheops tropheops*. From Regan (1922)

---

**58. *Tyrannochromis*** Eccles & Trewavas, 1989 — Endemic: “Hap” group

- 414. *Tyrannochromis macrostoma* (Regan, 1922) **type species**  
[synonyms: *T. maculiceps* (Ahl, 1926); *T. polyodon* (Trewavas, 1935)]
- 415. *Tyrannochromis nigriventer* Eccles, 1989



*Tyrannochromis macrostoma*. Photo © M.K. Oliver



Monkey Bay, Malawi. Photo © M.K. Oliver